

## **iDAF File Scanner**

Copyright © 2004-2016 C-R Media All Rights Reserved

# iDAF File Scanner

**Copyright © 2004-2016 C-R Media All Rights Reserved**

All rights reserved. No parts of this work may be reproduced in any form or by any means - graphic, electronic, or mechanical, including photocopying, recording, taping, or information storage and retrieval systems - without the written permission of the publisher.

Products that are referred to in this document may be either trademarks and/or registered trademarks of the respective owners. The publisher and the author make no claim to these trademarks.

While every precaution has been taken in the preparation of this document, the publisher and the author assume no responsibility for errors or omissions, or for damages resulting from the use of information contained in this document or from the use of programs and source code that may accompany it. In no event shall the publisher and the author be liable for any loss of profit or any other commercial damage caused or alleged to have been caused directly or indirectly by this document.

Printed: January 2016 in Eden Prairie, MN USA.

## **Publisher**

*Rich Habedank*

## **Special thanks to:**

*All those who have offered insights and suggestions for enhancement of this product.*

## **Printed**

*January 2016 in Eden Prairie,  
MN USA*

# Table of Contents

<b>Part I Welcome to iDAF</b>	<b>6</b>
1 Overview .....	6
2 Key features .....	7
3 What's New .....	8
4 Warranty and License Agreement.....	10
<b>Part II System Requirements &amp; Installation</b>	<b>14</b>
1 System Requirements.....	14
2 Installing, Updating or Removing iDAF.....	14
<b>Part III Configuration</b>	<b>17</b>
1 General .....	17
2 Cart Filters .....	18
3 Miscellaneous Settings.....	20
<b>Part IV Using iDAF</b>	<b>23</b>
1 Scanning for DAF Files.....	23
Stopping a File Scan Operation .....	27
2 Working with the Cart Display.....	28
3 Opening an Extended Inventory File (EIF).....	30
4 Saving Cart Lists to a File.....	30
5 Exporting Data to a File.....	31
6 Copying Carts (Audio Files).....	33
7 Editing Carts (Pro Version).....	34
8 Deleting Carts (Pro Version).....	35
9 Printed Reports (Pro Version).....	36
Print Preview .....	38
Report Page Setup .....	39
Report Printing Design .....	43
Saving Report Settings .....	49
<b>Part V Reference</b>	<b>51</b>
1 Cart Masks Explained.....	51
2 Customizing the Display.....	52
3 Filtering Displayed Data.....	54
4 Grouping Displayed Data.....	58
5 Keyboard Shortcuts.....	60

6	Sample Printed Report.....	61
7	Using Data Navigators.....	62
<b>Part VI Troubleshooting</b>		<b>64</b>
1	iDAF Seems "Slow".....	64
2	Trouble with Saving Files.....	65
3	Extended Event Logging.....	65
4	Vista, Windows 7 & Windows 8 Issues.....	66
<b>Part VII Contacting dcsTools</b>		<b>69</b>
<b>Part VIII Appendices</b>		<b>71</b>
1	Registration.....	71
2	List of Files .....	72
3	Command-Line Switches.....	74
4	Revision History.....	75
<b>Index</b>		<b>80</b>

**Welcome to iDAF**

**Part**



iDAF is an application designed to extract information about .DAF audio files. This audio file type is used by XStudio, DCS and Maestro audio delivery systems. These files contain special information in an area known as the "header", most often referred to as the "cart header".

Using iDAF, you can extract all information stored in audio file headers and display it for analysis. Additionally, registered versions of iDAF (designated the "Pro" version) support editing selected header information, including distribution, start and end dates, and AUX mark.

## Copyrights

Copyright © 2004-2016 dcsTools.com, C-R Media. All rights reserved.

Portions copyright © Microsoft Corporation. All rights reserved.

Information in this document is subject to change without notice. The software described in this document is furnished under a license agreement or nondisclosure agreement. The software may be used or copied only in accordance with the terms of those agreements. No part of this publication may be reproduced, stored in a retrieval system, or transmitted in any form or any means electronic or mechanical, including photocopying and recording for any purpose other than the purchaser's personal use without the written permission of C-R Media.

C-R Media  
8494 Saratoga Lane  
Eden Prairie, MN 55347  
USA

## Trademarks

apt-X® is a registered trademark of APT - Applied Processing Technology, Belfast

DCS™ and Maestro™ are trademarks of WideOrbit, Inc., San Francisco, CA (formerly Computer Concepts Corporation, Lenexa, KS, dMarc Broadcasting, Newport Beach, CA and Google, Inc., Mountain View, CA)

Windows 95®, Windows 98®, Windows Me®, Windows NT®, Windows 2000®, Windows XP®, Windows Server 2003®, Windows Vista®, Windows Server 2008®, Windows 7®, Windows 8®, Windows 8.1®, Windows Server 2012®, Windows Server 2012R2® and Windows 10® are registered trademarks of Microsoft Corporation.

Other brands and their products are trademarks or registered trademarks of their respective holders and should be noted as such.

## 1.1 Overview

The desire to have more complete information about .DAF audio files was the motivation to create iDAF. This audio file type was originally created by Computer Concepts Corporation, Lenexa, KS, for the its DCS audio delivery system in 1989.

.DAF files are currently used by a number applications, including the original DCS and Maestro systems, XStudio, XChange, XStudio Voice Tracker, XPlay and XStudio Recorder.

iDAF allows you to scan designated hard disk locations, searching for and cataloging all .DAF files found. All information available in the "cart header" is extracted and organized in an easy-to-read tabular display. Displayed cart information can be filtered several ways, including cart numbers, file types and description, to name a few. In fact, all available information about a particular audio file can be used for filtering and grouping of the displayed information. Showing just expired audio carts is a matter of clicking on a button, as is showing only future-dated audio files.

Displayed cart information can be further organized by hiding or showing columns of information on-

demand. Thus, if you're only looking at certain aspects of the audio files, you can remove extraneous information from the display and later restore it on-demand.

Unlike the standard XStudio, DCS or Maestro displayed inventory information, iDAF shows you key information like cart distribution, multi-cut rotation, sample rate, stereo/monaural settings, type of encoding used (PCM, apt-X™, MPEG), number of revisions that have been made to the audio, owner node of the audio, date/time stamp of the file, and even the analog and digital gain trim values.

Once information has been organized in a suitable way, the information can be exported to any of a number of popular file formats, including standard text, XML, HTML, and Excel (XLS) formats for further analysis or to just provide a list of carts to someone who may need to do maintenance on out-of-date audio, etc.

There are times when it's desirable to copy selected audio files from one location to another, and that feature is provided, too.

### ***Pro Version Features***

Registered users of iDAF (designated as the "Pro" version) gain advanced features like the ability to edit cart header information, including begin and end dates, distribution, description, agency field, multi-cut rotation and audio gain. Edited information is committed safely by initially making a copy of the audio file, modifying the header information, and then creating the finished file.

Pro version users can also delete audio files and print customizable inventory reports, including saving reports as PDF files directly (Windows 2000 and above).

## **1.2 Key features**

iDAF is a user-friendly way of obtaining complete information about .DAF files. Here are a few of the key features:

- The user interface is simple and easy to understand - and is fully customizable.
- All available information about an audio file is extracted and displayed in easily understood terms.
- Scan one or more audio directories simultaneously with no limit to locations scanned - if a folder can be seen by the application, you can scan it for .DAF files.
- Scan for certain files only using [custom cart masks](#) to reduce results to only the audio files you wish to review.
- Optionally display .DAF file version v1.4 extended cart header information, which includes song title, artist, hook line information, intro and outro times and tag text.
- Sort, group and filter audio cart lists in multiple ways, all user-defined. Custom filters can be saved for future use.
- File scans are background tasks - you can continue reviewing information while refreshing data or performing a completely new scan.
- Audio cart information can be saved to special extended inventory data files, preserving the information for later review. There is no limit to the number of saved inventory data files you can create, aside from available disk space.
- Previous inventory data can be reloaded on-demand.
- Audio cart information can be saved as a standard DCS/Maestro inventory data file (CMINV?? .DAT) on-demand.

- Display settings - groupings, etc. - are automatically saved on exit and restored on startup. You can also save particular column settings you may have customized for a specific purpose - and restore them on-demand.
- Specific combinations of folders scanned can be saved and easily recalled for use at a later time.
- Displayed audio information can be exported to a number of standard file formats - HTML, XLS (Excel), XML and standard Text. Export all data displayed or just selected items.
- Cart header information can be edited, including begin/end dates, descriptions, distribution and cart rotations. (Registered Pro version only)
- Groups of audio files can be deleted. (Registered Pro version only)
- User customizable printed reports, including print preview and the ability to save and restore custom print settings. (Registered Pro version only)
- Reports can be saved directly as PDF files (Registered Pro version only) on Windows XP and later operating systems.

## 1.3 What's New

Here are the latest changes, enhancements and corrections to iDAF by version number and date. For information on less-recent changes and enhancements, see the [Revision History](#) topic.

### Version 1.4.6.120 - 02/01/2016

1. **Enhancement.** iDAF has been updated to support Windows 10.

### Version 1.4.5.110 - 12/10/2014

1. **Fix.** Version 1.4.4 incompatibilities with Windows 98 & Windows NT4 have been addressed.

### Version 1.4.4.105 - 05/05/2014

1. **Enhancement.** iDAF now detects Windows 8, Windows 8.1, Windows Server 2012 and Windows Server 2012R2 operating systems and adjusts its display accordingly.

### Version 1.4.2.95 - 10/31/2012

1. **Enhancement.** The scan folder selection dialog now has the option of displaying a user-friendly name for selected folders. When adding a folder, you can enter a display name of your choosing or accept the default display name, which is the actual path.
2. **Enhancement.** Folder lists are now saved in a new file format that retains the display name, path, and whether or not the item is enabled (checked). When running a scan using the **[Recent Scans]** drop-down list, only folder paths that are enabled are scanned. The new default file extension for saved lists is now **".fldrlist"**. The original folder list files (**".lst"**) are handled automatically for backward compatibility.
3. **Enhancement.** iDAF now remembers the last folder used when saving or restoring certain kinds of files, including DCS/Maestro inventory files, EIF (Extended Inventory Files), report settings files and cart filters.
4. **Fix.** Carts (audio items) with a length or Aux Mark value greater than ~60:15 (60 minutes, 15 seconds) were displayed as being much shorter. Long carts now display correctly.



5. **Fix.** On certain operating systems with multiple monitors, the dialog that appears when opening a file is placed on the wrong monitor. This problem has been corrected.
6. **Fix.** When retrieving the audio file type information for display of the correct type graphic, an error with the text "Could not convert variant of type (Null) into type (String)." could occur.

## 1.4 Warranty and License Agreement

PLEASE READ THIS DOCUMENT CAREFULLY. BY INSTALLING AND USING THE SOFTWARE, YOU ARE AGREEING TO BECOME BOUND BY THE TERMS OF THIS AGREEMENT. IF YOU DO NOT AGREE TO THE TERMS OF THE AGREEMENT, PLEASE DO NOT INSTALL OR USE THE SOFTWARE.

This is a legal agreement between you and C-R Media. This Agreement states the terms and conditions upon which C-R Media offers to license the software. Whether contained in the disk package or having been pre-loaded by C-R Media on the machine's hard drive, together with all related documentation and accompanying items including, but not limited to, the executable programs, drivers, libraries and data files associated with such programs (collectively, the "Software").

### LICENSE

**Grant of License.** The Software is licensed, not sold, to you for use only under the terms of this Agreement. You own the disk or other media on which the Software is originally or subsequently recorded or fixed; but, as between you and C-R Media (and, to the extent applicable, its licensors), C-R Media retains all title to and ownership of the Software and reserves all rights not expressly granted to you.

**For Use on a Single Computer.** You may use the Software only on a single computer by a single user at any one time. You may transfer the machine-readable portion of the Software from one computer to another computer, provided that

- (a) the Software (including any portion or copy thereof) is erased from the first computer, and
- (b) there is no possibility that the Software will be used on more than one computer at a time.

**Stand-alone Basis.** You may use the Software only on a stand-alone basis, such that the Software and the functions it provides are accessible only to persons who are physically present at the location of the computer on which the Software is loaded. You may not allow the Software or its functions to be accessed remotely, or transmit all or any portion of the Software through any network or communication line.

**One Archival Copy.** You may make one (1) archival copy of the machine-readable portion of the Software for backup purposes only in support of your use of the Software on a single computer, provided that you reproduce on the copy all copyright and other proprietary rights notices included on the originals of the Software.

**No Merger or Integration.** You may not merge any portion of the Software into, or integrate any portion of the Software with, any other program, except to the extent expressly permitted by the laws of the jurisdiction where you are located. Any portion of the Software merged into or integrated with another program, if any, will continue to be subject to the terms and conditions of this Agreement, and you must reproduce on the merged or integrated portion all copyright and other proprietary rights notices included on the originals of the Software.

**Network Version.** If you have purchased a "network" version of the Software, this Agreement applies to the installation of the Software on a single "file server". It may not be copied onto multiple systems. Each "node" connected to the "file server" must also have its own license of a "node copy" of the Software, which becomes a license only for that specific "node".

**Transfer of License.** You may transfer your license of the Software, provided that

- (a) you transfer all portions of the Software or copies thereof,
- (b) you do not retain any portion of the Software or any copy thereof, and,
- (c) the transferee reads and agrees to be bound by the terms and conditions of this Agreement.

**Limitations on Using, Copying, and Modifying the Software.** Except to the extent expressly permitted by this Agreement or by the laws of the jurisdiction where you acquired the Software, you may not use, copy or modify the Software. Nor may you sub-license any of your rights under this Agreement.

**Decompiling, Disassembling, or Reverse Engineering.** You acknowledge that the Software contains trade secrets and other proprietary information of C-R Media and its licensors. Except to the extent expressly permitted by this Agreement or by the laws of the jurisdiction where you are located, you may not decompile, disassemble or otherwise reverse engineer the Software, or engage in any other activities to obtain underlying information that is not visible to the user in connection with normal use of the Software. In any event, you will notify C-R Media of any information derived from reverse engineering or such other activities, and the results thereof will constitute the confidential information of C-R Media that may be used only in connection with the Software.

### TERMINATION

The license granted to you is effective until terminated. You may terminate it at any time by returning the Software (including any portions or copies thereof) to C-R Media. The license will also terminate automatically without any notice from C-R Media if you fail to comply with any term or condition of this Agreement. You agree upon such termination to return the Software (including any portions or copies thereof) to C-R Media. Upon termination, C-R Media may also enforce any rights provided by law. The provisions of this Agreement that protect the proprietary rights of C-R Media will continue in force after termination.

### LIMITED WARRANTY

C-R Media warrants, as the sole warranty that the disks on which the Software is furnished will be free of defects, as set forth in the Warranty Card or printed manual included with the Software. No distributor, dealer or any other entity or person is authorized to expand or alter this warranty or any other provisions of this Agreement. Any representation, other than the warranties set forth in this Agreement, will not bind C-R Media.

C-R Media does not warrant that the functions contained in the Software will meet your requirements or that the operation of the Software will be uninterrupted or error-free. EXCEPT AS STATED ABOVE IN THIS AGREEMENT, THE SOFTWARE IS PROVIDED AS-IS WITHOUT WARRANTY OF ANY KIND, EITHER EXPRESS OR IMPLIED, INCLUDING, BUT NOT LIMITED TO, ANY IMPLIED WARRANTIES OF MERCHANTABILITY AND FITNESS FOR A PARTICULAR PURPOSE.

You assume full responsibility for the selection of the Software to achieve your intended results, and for the installation, use and results obtained from the Software. You also assume the entire risk as it applies to the quality and performance of the Software. Should the Software prove defective, you (and not C-R Media, or its distributors or dealers) assume the entire cost of all necessary servicing, repair or correction.

This warranty gives you specific legal rights, and you may also have other rights, which vary from country/state to country/state. Some countries/states do not allow the exclusion of implied warranties, so the above exclusion may not apply to you. C-R Media disclaims all warranties of any kind if the Software was customized, repackaged or altered in any way by any third party other than C-R Media.

## **LIMITATION OF REMEDIES AND DAMAGES**

THE ONLY REMEDY FOR BREACH OF WARRANTY WILL BE THAT SET FORTH IN THE WARRANTY CARD OR PRINTED MANUAL INCLUDED WITH THE SOFTWARE. IN NO EVENT WILL C-R MEDIA OR ITS LICENSORS BE LIABLE FOR ANY INDIRECT, INCIDENTAL, SPECIAL OR CONSEQUENTIAL DAMAGES OR FOR ANY LOST PROFITS, LOST SAVINGS, LOST REVENUES OR LOST DATA ARISING FROM OR RELATING TO THE SOFTWARE OR THIS AGREEMENT, EVEN IF C-R MEDIA OR ITS LICENSORS HAVE BEEN ADVISED OF THE POSSIBILITY OF SUCH DAMAGES. IN NO EVENT WILL C-R MEDIA'S LIABILITY OR DAMAGES TO YOU OR ANY OTHER PERSON EVER EXCEED THE AMOUNT PAID BY YOU TO USE THE SOFTWARE, REGARDLESS OF THE FORM OF THE CLAIM.

Some countries/states do not allow the limitation or exclusion of liability for incidental or consequential damages, so the above limitation or exclusion may not apply to you.

## **PRODUCT RETURNS**

IF YOU MUST SHIP THE SOFTWARE TO C-R MEDIA OR AN AUTHORIZED C-R MEDIA DISTRIBUTOR OR DEALER, YOU MUST PREPAY SHIPPING AND EITHER INSURE THE SOFTWARE OR ASSUME ALL RISK OF LOSS OR DAMAGE IN TRANSIT.

## **U.S. GOVERNMENT RESTRICTED RIGHTS**

All Software and related documentation are provided with restricted rights. Use, duplication or disclosure by the U.S. Government is subject to restrictions as set forth in subdivision (b)(3)(ii) of the Rights in Technical Data and Computer Software Clause at 252.227-7013. If you are sub-licensing or using the Software outside of the United States, you will comply with the applicable local laws of your country, U.S. export control law, and the English version of this Agreement.

## **CONTRACTOR/MANUFACTURER**

The Contractor/Manufacturer for the Software is:

C-R Media  
8494 Saratoga Lane  
Eden Prairie, MN 55347 USA

## **GENERAL**

This Agreement is binding on you as well as your employees, employers, contractors and agents, and on any successors and assignees. Neither the Software nor any information derived therefrom may be exported except in accordance with the laws of the United States or other applicable provisions. The laws of the State of Minnesota govern this Agreement (except to the extent federal law governs copyrights and federally registered trademarks). This Agreement is the entire agreement between us and supersedes any other understandings or agreements, including, but not limited to, advertising, with respect to the Software.

If any provision of this Agreement is deemed invalid or unenforceable by any country or government agency having jurisdiction, that particular provision will be deemed modified to the extent necessary to make the provision valid and enforceable, and the remaining provisions will remain in full force and effect.

For questions concerning this Agreement, please contact C-R Media at the address stated above. For questions on product or technical matters, contact the C-R Media technical support center nearest you.

## **SPECIAL PROVISIONS APPLICABLE TO THE EUROPEAN UNION**

If you acquired the Software in the European Union (EU), the following provisions also apply to you. If there is any inconsistency between the terms of the Software License Agreement set out above and the following provisions, the following provisions shall take precedence:

### **Decompilation.**

You agree not for any purpose to transmit the Software or display the Software's object code on any computer screen or to make any hard copy memory dumps of the Software's object code. If you believe you require information related to the inter operability of the Software with other programs, you shall not decompile or disassemble the Software to obtain such information, and you agree to request such information from C-R Media at the address listed above. Upon receiving such a

request, C-R Media shall determine whether you require such information for a legitimate purpose and, if so, C-R Media will provide such information to you within a reasonable time and on reasonable conditions.

**Limited Warranty.**

EXCEPT AS STATED ABOVE IN THIS AGREEMENT, AND AS PROVIDED BELOW UNDER THE HEADING "STATUTORY RIGHTS", THE SOFTWARE IS PROVIDED AS-IS WITHOUT WARRANTY OF ANY KIND, EITHER EXPRESS OR IMPLIED, INCLUDING, BUT NOT LIMITED TO, ANY IMPLIED WARRANTIES OR CONDITIONS OF MERCHANTABILITY, QUALITY AND FITNESS FOR A PARTICULAR PURPOSE.

**Limitation of Remedy and Damages.**

THE LIMITATIONS OF REMEDIES AND DAMAGES IN THE SOFTWARE LICENSE AGREEMENT SHALL NOT APPLY TO PERSONAL INJURY (INCLUDING DEATH) TO ANY PERSON CAUSED BY C-R MEDIA'S NEGLIGENCE AND ARE SUBJECT TO THE PROVISION SET OUT BELOW UNDER THE HEADING "STATUTORY RIGHTS".

**Statutory rights.**

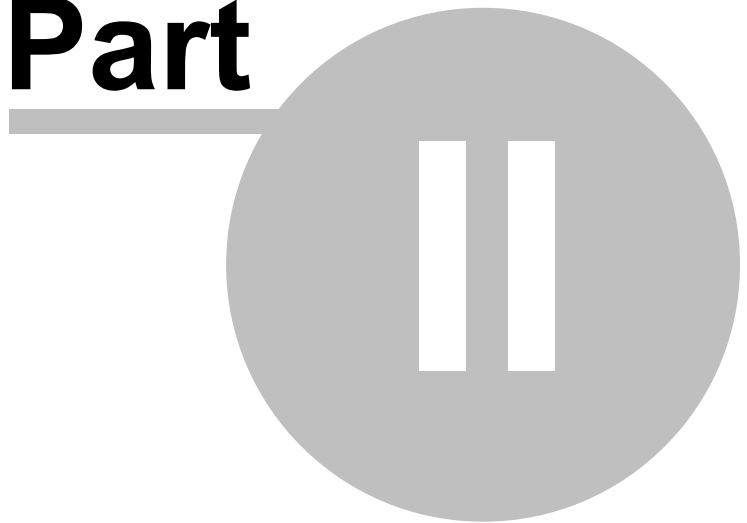
Irish law provides that certain conditions and warranties may be implied in contracts for the sale of goods and in contracts for the supply of services. Such conditions and warranties are hereby excluded, to the extent such exclusion, in the context of this transaction, is lawful under Irish law. Conversely, such conditions and warranties, insofar as they may not be lawfully excluded, shall apply. Accordingly nothing in this Agreement shall prejudice any rights that you may enjoy by virtue of Sections 12, 13, 14 or 15 of the Irish Sale of Goods Act 1893 (as amended).

**General: the laws of the Republic of Ireland govern This Agreement.**

The local language version of this agreement shall apply to Software acquired in the EU. This Agreement is the entire agreement between us and you agree that C-R Media will not have any liability for any untrue statement or representation made by it, its agents or anyone else (whether innocently or negligently) upon which you relied upon entering this Agreement, unless such untrue statement or representation was made fraudulently.

# System Requirements & Installation

**Part**



iDAF requires certain hardware and Windows operating system minimums. You must also install the iDAF software on the PC using an installation program.

This section documents the system requirements for iDAF and covers the process of installing, updating and removing the iDAF software.

## 2.1 System Requirements

The base hardware and operating system requirements to run iDAF:

- **Operating System:** Windows 98 SE, Me or Windows NT, Windows 2000 Pro, Windows XP, Windows Vista and up, and for servers, Windows 2000 Server and up.
- **CPU:** Pentium processor or faster
- **RAM Memory:** 48 MB RAM or more for Windows 98 SE and Me, 128 MB RAM or more for Windows NT, Windows 2000 or XP, and 1 GB RAM or more for Vista and later operating systems. For servers, a minimum of 1 GB RAM is recommended.
- **Display:** A minimum of 800 x 600 resolution, 1024 x 768 or greater is highly recommended.
- **Hard Disk:** At least 15 MB free disk space for the application, support files and documentation.
- **Network:** A LAN card (NIC), known to be working, if you will be connecting to a LAN to access audio files.
- **Printer:** To print reports (registered Pro version only), you must have at least one printer installed.

If you have a large inventory of audio files, additional RAM memory may be desirable if you experience slow inventory load times. Inventory data is kept in memory and insufficient RAM will cause disk-swapping, which slows performance.



The installation package for iDAF includes separate builds of iDAF for legacy operating systems (prior to Windows XP) and current operating systems. The installer automatically detects the operating system you are using and selects the correct file to install. This allows for additional features and functionality for newer operating systems while still allowing the software to be used on legacy operating systems that do not support some of the new features. Notable features not available on legacy operating systems include direct export of reports to PDF files and multi-select of filter criteria when filtering data via the column drop-down lists

## 2.2 Installing, Updating or Removing iDAF

The iDAF installation program provides step-by-step instructions on every screen displayed during the installation. Follow the instructions on each screen to install iDAF.

### ***Before you install***

1. Close all other programs, including any anti-virus programs.
2. If you are installing on Windows NT, Windows 2000, Windows XP, Windows Vista, Windows 7 or Windows 8, log on to your computer with administrator privileges.



You must have administrator privileges to perform an installation or a software update when running on Windows NT and later operating systems.

### ***Installing iDAF***

iDAF is distributed as a download-able installation program. The latest version of the software is always available on our [web site](#) on the iDAF product home page and the general downloads page.

1. After you have downloaded the installation program to your computer, locate the setup program, **iDAFSetup.exe**, in the folder to which you downloaded the file. [**Double-click**] on the setup program to begin installation.
2. Follow the instructions on each screen to install the software.

### ***Updating iDAF***

1. If you have downloaded or otherwise received a revision for iDAF, the process for updating the software is virtually identical to the initial installation. However, the installation dialogs may be a bit different. When updating, you are not typically given an opportunity to select the target folder for installation, as that choice has already been made in a previous installation.
2. You may be prompted that an old version of iDAF has been found and that it must be uninstalled (removed) before continuing with the update. If you see this prompt when updating iDAF, you should answer "**Yes**" to remove the old version, and if prompted to confirm the removal of the old version, again answer "**Yes**".
3. On occasion, updating iDAF may require some additional tasks be performed during the update. Such tasks might include validating and/or updating your registration and making adjustments to your preferences settings. If these tasks are needed, you will be prompted for any input required and notified if the update task could not be completed successfully.



You must have administrator privileges to perform an update when running on Windows NT and later operating systems.

### ***To Uninstall iDAF***

To remove iDAF from your PC, select the Control Panel applet Add/Remove Programs. Select iDAF and click on the [**Remove**] or [**Uninstall**] button. Follow the prompts to uninstall the software.



Only files originally installed are removed. Event log files and your preferences files are not removed. See the [List of Files](#) topic for more information on files that are installed or created by iDAF.

# Configuration

**Part**




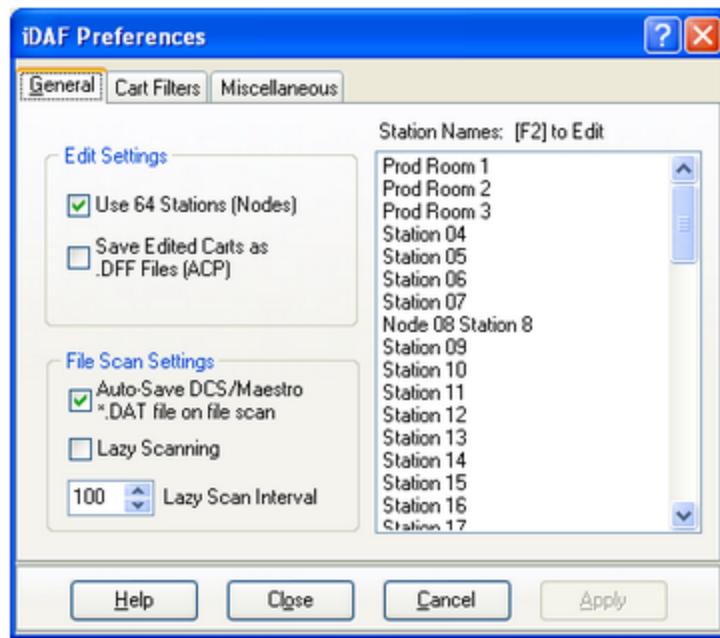


iDAF does not require any particular setup, but to use the program most efficiently, set or modify properties in the Preferences dialog to suit your needs. Review each page of the Preferences dialog for information on each property's usage.

### 3.1 General

You can name each of your DCS or Maestro work stations so displayed lists are more meaningful, choose whether to use the standard 16-node station list or the expanded 64-node station list, and decide how edited .DAF files will be saved.


Editing of .DAF file headers is available only in the registered "Pro" version of iDAF.



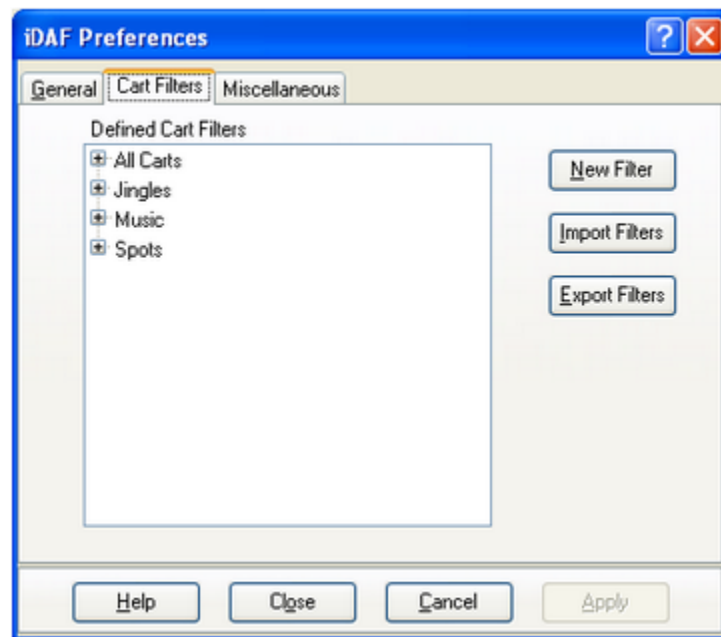
Make your choices for each of the items selected according to the following guidelines:

<u>Item</u>	<u>Usage</u>
Use 64 Stations (Nodes)	If checked, the station list is expanded to 64 stations (nodes). You can then assign stations for distribution when editing carts. As a default, this item is unchecked.
Save Edited Carts as .DFF Files	If checked, carts that are edited are saved with a file extension of .DFF instead of the standard .DAF extension. .DFF files are imported directly by an ACP server if placed in the server's audio directory. As a default, this item is checked.
Auto-Save DCS/Maestro *.DAT file	If checked, a standard XStudio/DCS/Maestro inventory data file is automatically created when a file scan is completed. The name of the file is " <b>cminvZZ.dat</b> " and is located in the iDAF

<u>Item</u>	<u>Usage</u>
	application folder. The saved file can be used by any application that supports the standard Computer Concepts Corporation inventory file. As a default, this item is unchecked.
Lazy Scanning	If checked, file scanning operations are slowed down using the the Lazy Scan Interval property. Use this option if scanning operations are using too much CPU time on the PC whose folders are being scanned. This option is useful if scanning an older ACP server. As a default, this item is unchecked.
Lazy Scan Interval	The amount of time, in milliseconds, that audio scan operations will "breathe". Default value = 100 milliseconds.
Station Names	A list of available stations. You can name them to something more meaningful. [ <b>Double-Click</b> ] on the station name you wish to change to edit the name. The station names are listed in order of Computer Concepts Corporation's node numbering scheme (1..16 or 1..64). If you are unsure about which stations are which node number, check your DCS or Maestro configuration for this information.

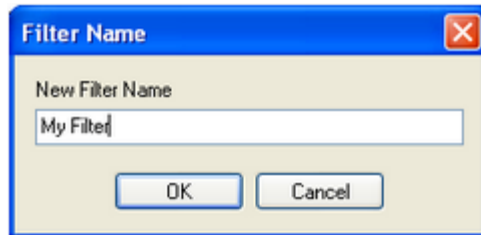
## 3.2 Cart Filters

You can create Cart Filters to use in reducing the number of displayed audio files when reviewing a list of audio. Each named filter has one or more cart number masks, with the "?" character treated as a wildcard.

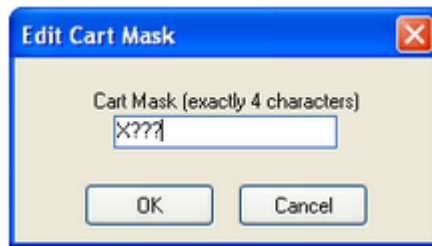


## Adding Cart Filters

To create a new filter, you can use the **[New Filter]** button, **[Right-Click]** on the Cart Filter list and select the menu item "Add Filter", or touch the **[Insert]** key. A dialog asking you to name the cart filter is presented, similar to the one below:



Enter a name for the filter and click on the **[OK]** button. A second dialog is displayed, asking you to enter a cart mask, similar to the one shown here:



The "?" characters are wildcards. The cart mask is limited to 4 characters. The "?" can appear in any of the 4 character positions. For more information on cart masks, see the topic [Cart Masks Explained](#) in the Reference section.



The "?" character is the **only** wildcard character supported in iDAF, unlike most other dcsTools products that incorporate the use of cart filters or cart categories. This is due to the inventory display control used in iDAF. While other wildcard characters, including "#" and "\*", will be accepted when creating a cart mask, the mask will not work as expected. A second method of filtering information, which allows for additional flexibility, provides the means to duplicate the functionality of the non-supported wildcard characters. See the [Filtering Displayed Data](#) topic for additional information.

You should only use "?????" if you truly intend that **all** cart numbers will be displayed when a cart filter is selected.

## Editing a Cart Filter or Cart Mask

To edit either a cart filter or cart mask, **[Double-Click]** on the item. A dialog like the ones used in creating a new filter is displayed. Make your changes and click on the **[OK]** button to save them.

## Deleting a Cart Filter or Cart Mask

To delete an item, select the item and press the **[Delete]** key. Alternatively, you can pop-up the context menu and select "Delete" from the menu.



When you delete a cart filter, all cart masks associated with that filter are deleted as well.

### ***Exporting Cart Filters***

You can save a group of cart filters, too, by clicking on the [**Export Filters**] button or selecting the pop-up menu item for exporting the filters. You are prompted to provide a file name for the exported filter list. You might use this feature to save a list of filters you have created for others using iDAF on another PC.

### ***Importing Cart Filters***

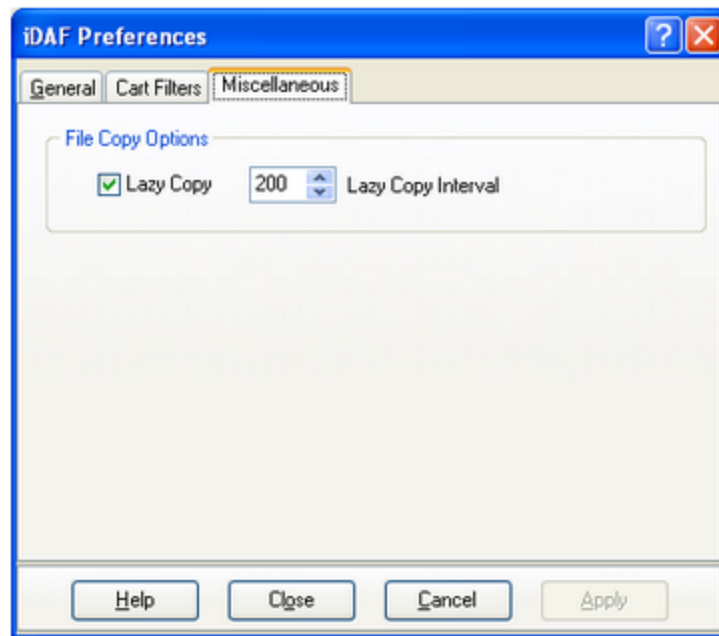
The complement to exporting a cart filter list is the ability to import a list. If you have a saved filter list, you can import it by clicking on the [**Import Filters**] button or selecting the pop-up menu item for importing filters.



When you import cart filters, the entire contents of the cart filter list is replaced by the filter list you are importing.

## **3.3 Miscellaneous Settings**

This page includes some miscellaneous settings that can be used with iDAF.



Make your choices for each of the items according to the following guidelines:

---

<u>Item</u>	<u>Usage</u>
Lazy Copy	If checked, file copy operations are slowed down using the Lazy Copy Interval value. This option is useful if you wish to avoid over-tasking the target PC when copying large groups of files. It is most often used to prevent older ACP servers from using too many resources for a file copy operation.
Lazy Copy Interval	The amount of time, in milliseconds, the file copy operations will "breathe" if Lazy Copy is enabled.

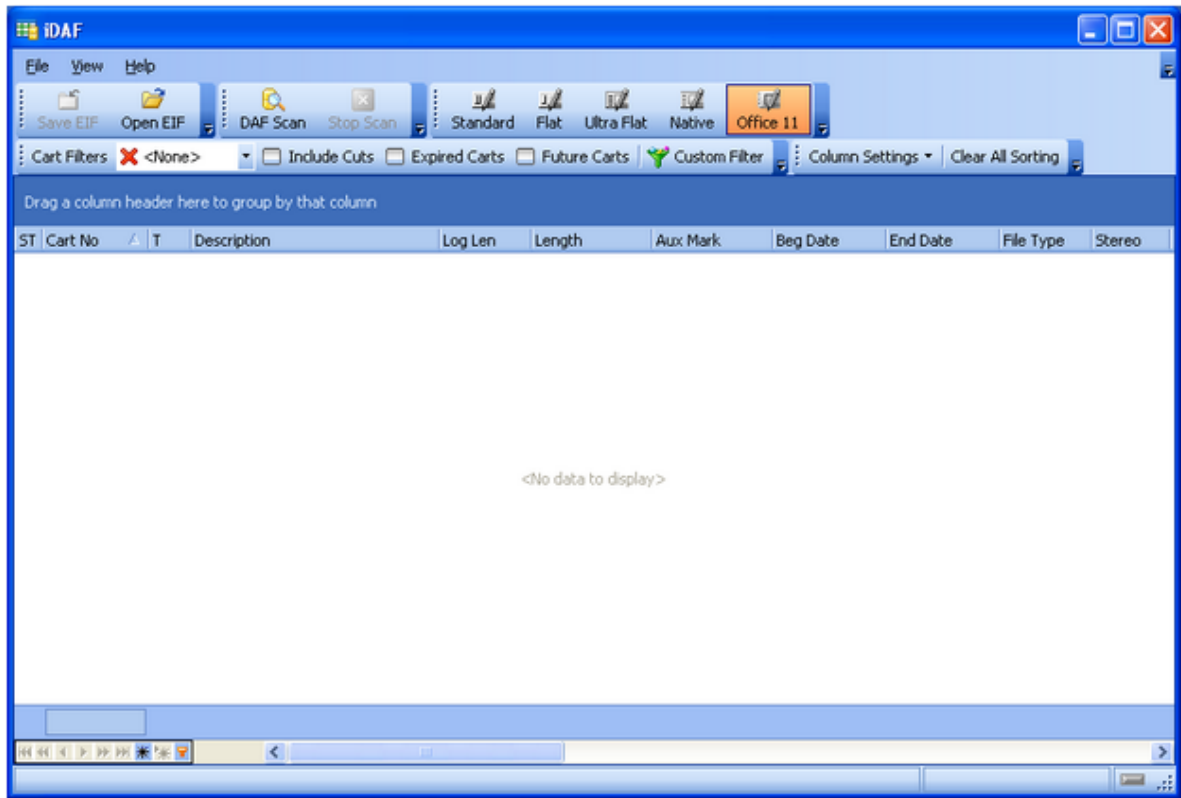
**Using iDAF**

**Part**



Using iDAF on a day-to-day basis is simple. iDAF is essentially a .DAF file scanner that retrieves all information about a Computer Concepts Corporation audio file and displays that information in a simple, easy-to-understand format.

To get started, launch iDAF from the Programs menu or a desktop shortcut. Once the program has started, a display similar to the example here is shown - note the visual appearance may differ slightly, depending on the host operating system.

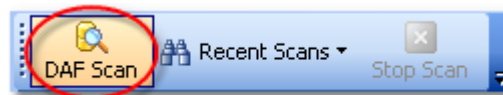


There's not much to look at initially - just a empty list of carts. To generate a list of audio carts, you will need to perform a scan of some audio folders.

## 4.1 Scanning for DAF Files

There are a couple of ways to initiate a scan for .DAF files. One is to start a completely new scan and select the folders you wish to scan, a second is to re-use a previously saved list of folders.

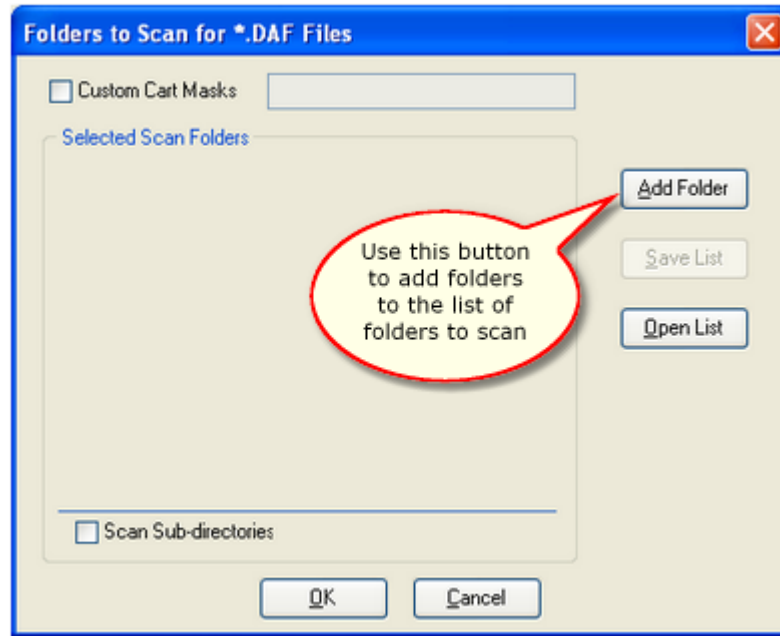
To perform a new scan, click on the [**DAF Scan**] button, shown here highlighted.



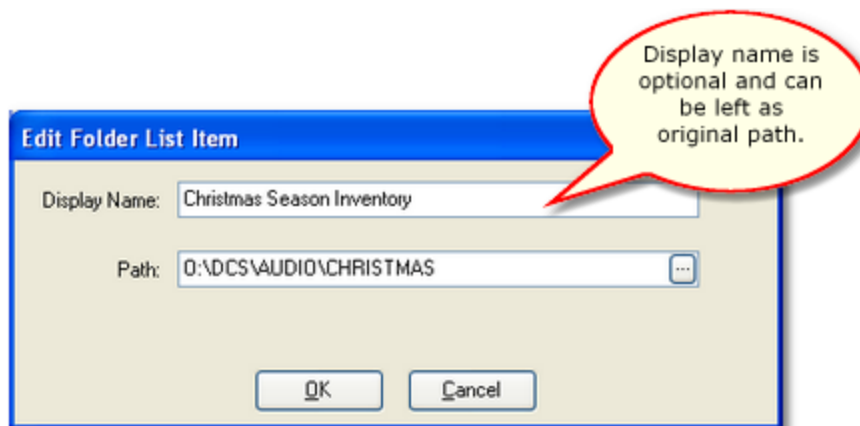
A folder selection dialog appears, allowing you to select folders to scan. Optionally, you can limit the results of your scan to just those carts (audio files) matching a cart mask (file mask) that you define. The folder selection dialog provides ways to save folder lists and open previously-saved folder lists. If you are creating a folder list that you might use again and again, be sure to [save the list](#) before closing the dialog.

### Scanning for All .DAF Files (Default Behavior)

Use the [Add Folder] button to add a folder to the list of folders that will be scanned.

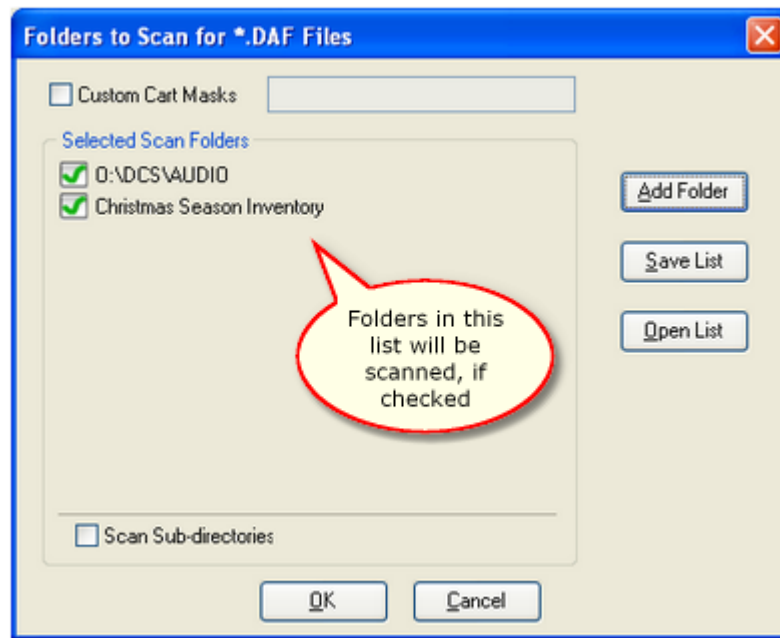


When you select a folder, the **Edit Folder List Item** dialog appears. It allows you to change the displayed name of the folder. Entering a description of the selected folder that is meaningful to you can be useful when you have several folders involved in a scan and may not remember the content of each folder. To leave the display name as the actual folder name, click on the [OK] button.



As folders are selected, the added folder's display name is shown in the Selected Scan Folders list. In the example shown, the first item in the list is displayed as the actual folder name, the second item is displayed with a user-entered display name.





The folder item is checked, meaning that the folder will be scanned. You can "uncheck" the folder to skip scanning that particular folder.

To edit one of the folders in the list, press the [F2] key or [Double-Click] on the item. The **Edit Folder List Item** dialog appears, which allows you to modify the display name and if desired, change the actual path (folder) as well. You can use the button adjacent to the path information to select a different folder with a standard folder list. If you are using display names you have created, you can use the edit technique to view the actual path.

You can force iDAF to scan all subdirectories of selected folders if desired - just check the "**Scan Sub-directories**" item.

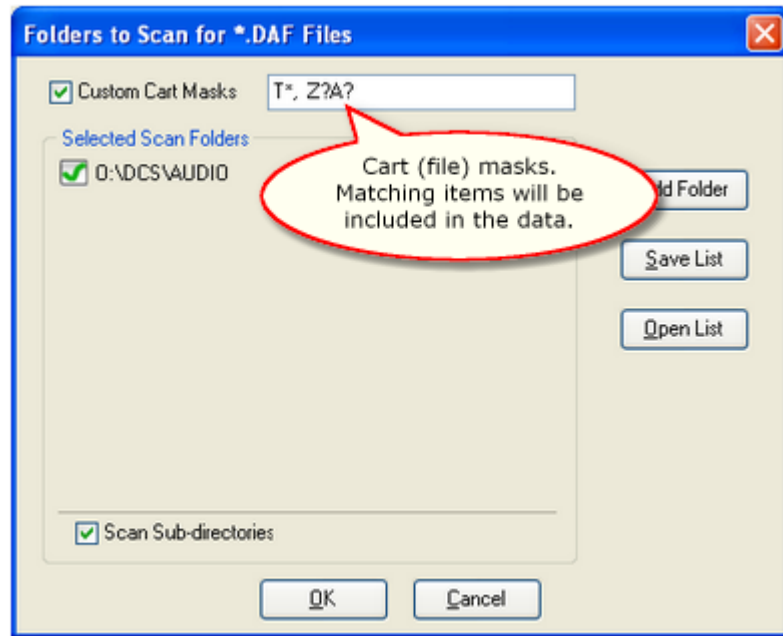


Be careful when using the **Scan Sub-directories** item, as you will get duplicate entries in your cart list if one of the folders you are scanning is also a subdirectory of another of the folders you are scanning. The subdirectory flag is applied to **all selected folders** in the list.

### **Scanning for Selected .DAF Files Only (Custom Cart Masks)**

You can limit the results of your scan to just certain audio files meeting your criteria. This might be useful in the case where you have a large number of audio files that would normally be scanned, but want to look at just a subset of them. If the subset will produce a much smaller number of files, the scanning process will complete more quickly than retrieving information on all audio files in a given folder.

To control which .DAF files for which complete information is retrieved, select folders to scan and whether or not subdirectories will be scanned, as usual. Check the "**Custom Cart Masks**" checkbox, which enables the adjacent mask entry field. Enter one or more cart masks, separating each mask from the others with a comma or semicolon.



In the example shown, there are two masks entered, separated by a comma. The first mask (**T\***) means that all audio files with the first letter "T" will be **included** in the results. The second mask (**Z?A?**) is more specific, allowing only audio files with a first letter "Z" and third letter "A" to be **included** in the results. Note, too, that since the last character in the second mask is a question mark, only 4-character named audio files will be included - cuts of a multi-cut cart will not be included. To include cuts of a multi-cut cart in this example, change the mask to **Z?A\***.



The cart masks entered here are in reality **file masks**, and as such, you can use the normal operating system "\*" (asterisk) and "?" (question mark) wildcards. In the context of performing a scan for audio files, the results are the same as if you used the Windows file search dialog. The main difference is that this dialog automatically adds the file extension (.DAF) to each mask in your list.

If the carts (audio files) you're scanning might include multi-cut carts and you want them processed, you must use either an asterisk as the last character of the mask or use a 7-character mask that has question marks as the last four characters (to include the dash used in multi-cut cart file names), i.e: **Z?A????**

To start the scan for .DAF files, click on the **[OK]** button. The dialog will disappear and the scan will begin. The main display's scan toolbar will change appearance, similar to the example shown in the [Stopping a File Scan](#) topic.

### **Saving a Scan List**

Once you have selected the folders you wish to scan, you can save the list you have created for re-use at another time. Click on the **[Save List]** button and provide a file name. The list will be saved and can be later loaded in this dialog. The list also appears on the main display - select the button **[Recent Scans]** to drop down a list of the most recently used scan lists.



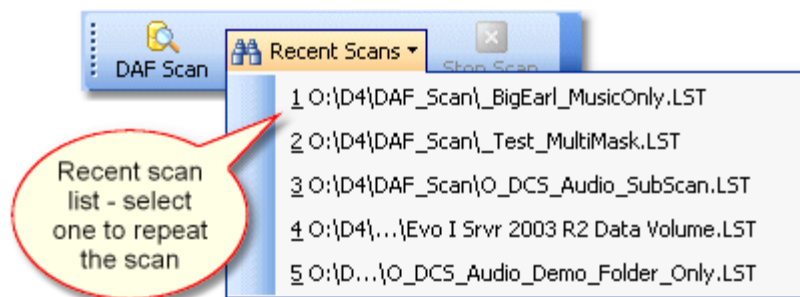
When you save a list of folders, any Custom Cart Masks are saved, as well as the state of the Scan Sub-directories checkbox and whether or not a particular folder in the list is enabled for scanning (checked). When you load the saved list, these additional properties are restored as well.

### Opening a Scan List

To open a previously-saved scan list, click on the [**Open List**] button and select the list you previously saved. If you already have some folders in the list, you'll be prompted as to whether or not the list you're opening should be appended to what you already have in the list.

### Re-Using a Scan List (Recent Scans)

When you have saved a scan list prior to performing the scan, the list is automatically added to the [**Recent Scans**] button drop-down list. If you want to perform the scan again using the exact settings you saved, select the the list you want from the drop-down list. The scan will immediately be performed without presenting the selection dialog.



When you select a list from the [**Recent Scans**] button and drop-down list, any Custom Cart Masks that were saved with the folder list are used, along with the Scan Sub-directories flag and the enabled state of each of the folders in the list.

#### 4.1.1 Stopping a File Scan Operation

Sometimes you may want to stop a scan operation, either because it's taking too long or you have decided to change some of the scan settings.

When a file scan is in progress, the [**Stop Scan**] button is enabled. Stop the scanning by clicking on this button. During a scan, an animation appears, indicating that a scan for .DAF files is active. During an active scan, an LED on the bottom status bar of the main display also changes colors.



If you stop an in-progress scan, the data displayed on-screen is not affected. iDAF simply stops the file scan operation and discards the cart information gathered to the point where the scan operation was

stopped.

## 4.2 Working with the Cart Display

When a scan of files has been completed - or an extended inventory file (EIF) has been opened - the list of found files is displayed, similar to the example shown.

ST	Cart No	T	Description	Log Len	Length	Aux Mark	Beg Date	End Date	File Type	Stereo
	T100	M	Coca Cola Classic	:60			6/19/1993	12/31/2037	mcHdr	<input type="checkbox"/>
	T100-01	C	Coca Cola Classic	:60	00:00:59.480	00:00:59.480	6/19/1993	12/31/2037	apt-X	<input checked="" type="checkbox"/>
	T100-02	C	Coca Cola Classic	:60	00:00:58.944	00:00:58.944	6/19/1993	12/31/2037	apt-X	<input checked="" type="checkbox"/>
	T170	M	Anheuser Busch/Bud Dry	:60			9/8/1991	12/31/2037	mcHdr	<input type="checkbox"/>
	T170-01	C	Anheuser Busch/Bud Dry	:60	00:01:00.256	00:00:59.200	9/8/1991	12/31/2037	apt-X	<input checked="" type="checkbox"/>
	T170-02	C	Anheuser Busch/Bud Dry	:60	00:01:00.096	00:00:59.432	9/8/1991	12/31/2037	apt-X	<input checked="" type="checkbox"/>
	T222	S	Wild West Promo	:60	00:01:01.608	00:01:00.016	6/19/1993	12/31/2037	apt-X	<input checked="" type="checkbox"/>
	T223	M	Chevron	:30			6/19/1993	12/31/2037	mcHdr	<input type="checkbox"/>
	T223-01	C	Chevron	:30	00:00:30.416	00:00:29.816	6/19/1993	12/31/2037	apt-X	<input checked="" type="checkbox"/>
	T223-02	C	Chevron	:30	00:00:30.256	00:00:29.176	6/19/1993	12/31/2037	apt-X	<input checked="" type="checkbox"/>
	T223-03	C	Chevron	:30	00:00:30.136	00:00:29.528	6/19/1993	12/31/2037	apt-X	<input checked="" type="checkbox"/>
	T501	S	Computer City	:60	00:01:00.888	00:00:58.808	10/8/1994	12/31/2037	apt-X	<input checked="" type="checkbox"/>
	T503	M	Payless Shoe Store	:30			10/8/1994	12/31/2037	mcHdr	<input type="checkbox"/>
	T503-01	C	Payless Shoe Store	:30	00:00:30.464	00:00:30.464	10/8/1994	12/31/2037	apt-X	<input checked="" type="checkbox"/>
	T503-02	C	Payless Shoe Store	:30	00:00:29.256	00:00:29.256	10/8/1994	12/31/2037	apt-X	<input checked="" type="checkbox"/>
	T504	S	Alpine Lace Cheese	:60	00:00:58.808	00:00:58.416	10/8/1994	12/31/2037	apt-X	<input checked="" type="checkbox"/>
	T508	S	Conter Farms - Apples	:60	00:01:02.928	00:01:01.864	10/8/1994	12/31/2037	apt-X	<input checked="" type="checkbox"/>
	T509	S	Cooner Medical Center	:60	00:01:01.264	00:01:00.400	10/8/1994	12/31/2037	apt-X	<input checked="" type="checkbox"/>

The list can be manipulated in several ways to reduce the displayed contents to just those items you wish to review. You can also control the position and size of each column of information.

Methods of manipulating the list include:

Action	Result
Apply Cart Filter	When a user-defined Cart Filter is applied, only the audio files that match the filter are displayed. Cart Filters are created in <a href="#">Preferences</a> .
Include Cuts check box	When a user-defined Cart Filter is applied, checking this item causes the list to display cuts associated with a multi-cut cart. If unchecked, cuts are not displayed.
Expired Carts check box	When this item is checked, only carts with an end date greater than today are displayed. Cart Filters are respected.
Future Carts check box	When this item is checked, only carts with a start date greater

<u>Action</u>	<u>Result</u>
	than today are displayed. Cart Filters are respected.
Column Filtering	In addition to filtering displayed information by cart number, any column can be used to apply a filter. Click on the arrow graphic adjacent to the column title. A list of filter criteria is displayed - you can choose an individual item or select the "Custom.." option to manually created complex filters. Column filters can be saved for future use, if desired. See the topic <a href="#">Filtering Displayed Data</a> in the Reference section for more information on column filtering.
Custom Filters	You can create a filter of your own design by clicking on the <b>[Custom Filter]</b> button on the main display. A dialog is presented, allowing you to filter on any column value including multiple values and multiple columns. Custom filters can be saved to disk for future use in the custom filter dialog. See the topic <a href="#">Filtering Displayed Data</a> in the Reference section for more information on custom filters.
Sorting by Column	Sort the information on a column by clicking on the column title. The list will be sorted ascending on that column. Clicking on the column title again will reverse the sort to descending. To sort on multiple columns, hold down the <b>[CTRL]</b> key, then click on a column title.
Grouping by Column	Grouping brings records that have the same values in a particular column together. Grouping is useful when the column used contains several equal values for different carts - for instance, grouping carts by File Type (apt-X, MPEG, PCM). See the Reference section topic on <a href="#">Grouping Data</a> for additional details.
Columns - Display/Hide	You can remove columns from the display if you are not interested in the information contained in a column. <b>[Right-Click]</b> on the column title and select the pop-up menu item "Remove this column". To later restore a column, <b>[Right-Click]</b> on any column title, then select the menu item "Field Chooser". Drag the field you wish to restore to the position where you want it displayed, then drop the item. See the topic on <a href="#">adding and removing display columns</a> in the Reference section for additional information.
Moving a Column	To move a column from one location to another, click on the column title, hold the mouse button down, and drag the column to the desired position. A marker is displayed, showing you where the column will be placed when it's dropped. See the topic on <a href="#">moving columns</a> in the Reference section for additional details.
Changing Column Width	To change the width of a column, position the mouse cursor at the right edge of the column title. The cursor shape will change,

**Action****Result**

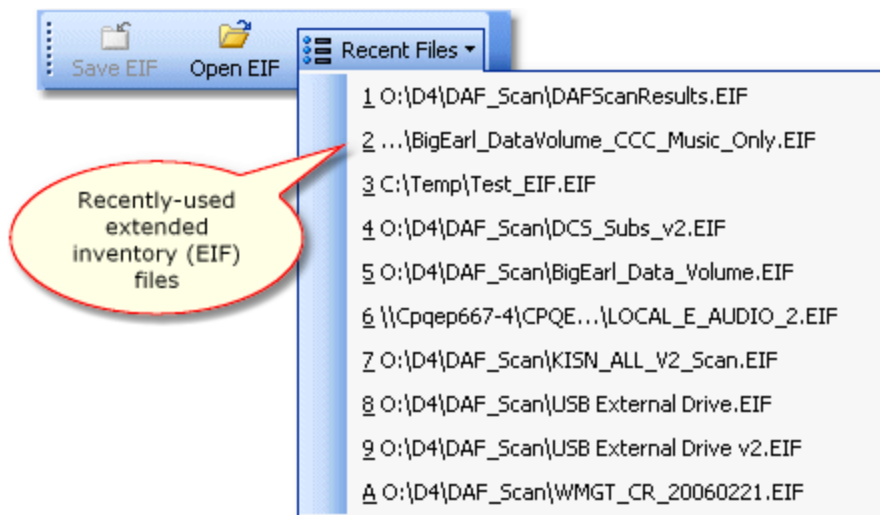
indicating you are ready to re-size. Click and hold the left mouse button down, then move the column marker left to narrow the column display, right to enlarge it. When the column width is what you'd like it to be, release the button. See the topic on [moving columns](#) in the Reference section for additional details.

### 4.3 Opening an Extended Inventory File (EIF)

When a folder or group of folders has been scanned for .DAF files, the list is automatically saved to a data file named **DAFScanResults.eif**. Each time a new scan is run, the cart list is saved with this same name, overwriting a file of the same name. You can open the last extended inventory data file by selecting the **[Open EIF]** button on the main display, or by selecting the file from the **[Recent Files]** drop down list.



Open an EIF File



Open an EIF File from Recent Files list

In either case, when you select an **Extended Inventory File** to be opened, all displayed data is replaced by the contents of the opened inventory data file.

While the selected EIF file is being loaded, a progress bar is displayed.

### 4.4 Saving Cart Lists to a File

Displayed lists of audio files (cart lists) can be manually saved for special purposes, if desired. iDAF supports saving the lists as a standard "Extended Inventory File" or as an XStudio, DCS and Maestro inventory file (CMINV???.DAT).

## Saving EIF Files

Once an inventory file is loaded and displayed, you can save the data to an Extended Inventory File with a name of your choosing. Most often, this is done to preserve the results of a file scan for later review. To save the cart list currently displayed as an EIF file, click on the **[Save EIF]** button on the toolbar.



In the example above, the **[Save EIF]** button is highlighted, which happens when you float your mouse over the button. During the save, a progress bar is displayed, indicating the status of the save.



## Saving Inventory Information as a DCS/Maestro File

In addition to saving all inventory information for archive or later review, you can save the displayed inventory information to a standard XStudio, DCS and Maestro inventory file format (CMINV???.DAT). Data saved in this format can be read by any utility software that makes use of the standard inventory file.



Standard DCS/Maestro inventory files cannot be opened by iDAF. Standard inventory data files do not include the cuts associated with a multi-cut cart, just the multi-cut header information.

To save the results of a scan to a standard DCS/Maestro inventory file format, select the menu item **File | Save as DCS/Maestro Inventory**. A dialog will open, allowing you to select the location and file name for the save. Click on the **[OK]** button to save the data to the file you have selected.

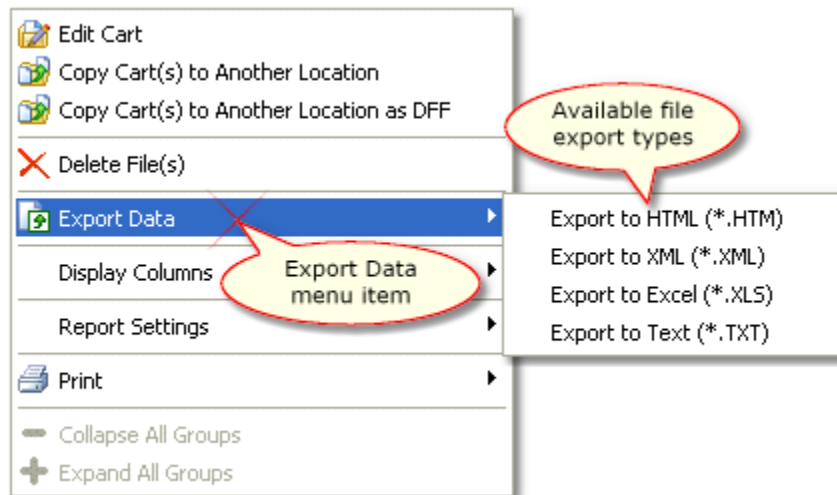
Before actually saving the data, it is first prepared in the correct format.



A status window is displayed during the preparation process, then a second status bar is displayed during the actual write-to-file process.

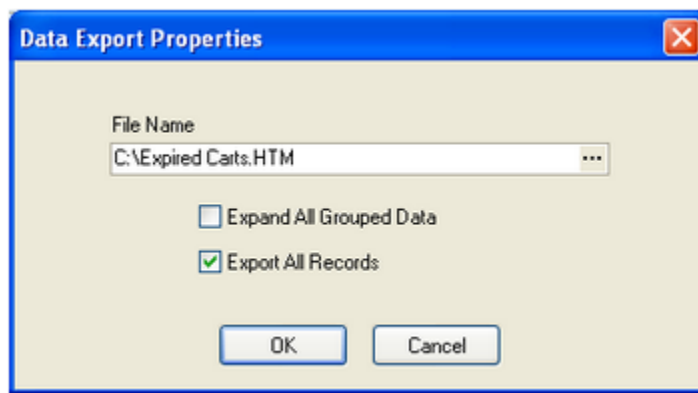
## 4.5 Exporting Data to a File

Displayed information can be exported to a number of popular file formats. This can be useful for creating lists of expired carts, for instance, that you might want to send to the production director for maintenance. To export, **[Right-Click]** on the list of carts. Select the item **"Export"**. A sub-menu appears, allowing you to choose one of the available export types.



Cart List Pop-up Menu

When you select an export type, a dialog appears, allowing you to select the name of the target file and set some export options.



By default, all data displayed will be exported, exactly as it is displayed, including any grouping, columns and column widths. Choose whether you want all data exported (the default) or just items you have selected. If you have some column groupings you can also force all groups to be expanded.

Either type in a file name or use the adjacent button to select a file. iDAF remembers the last file name you used when exporting information to a file and it is presented as the default file name the next time you choose the same export type.

Available export types include:

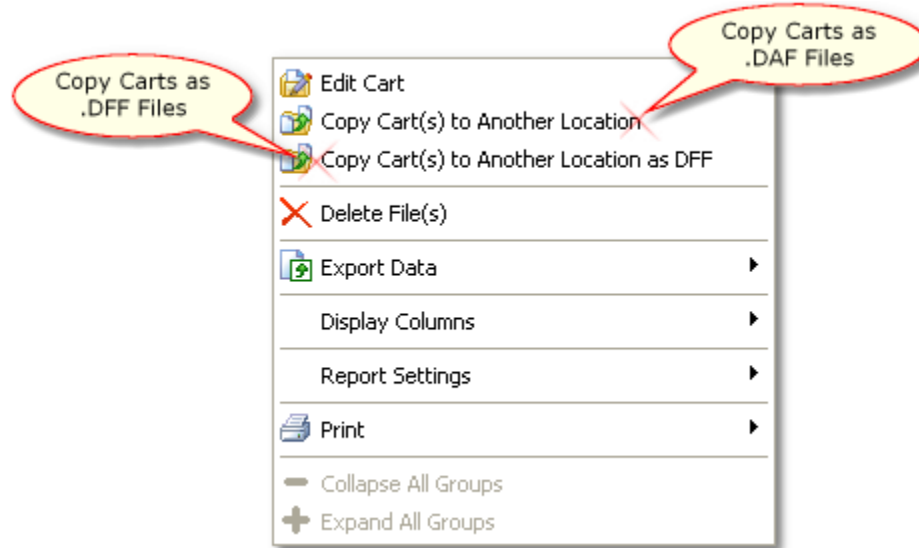
<b><u>Export Type</u></b>	<b><u>Result</u></b>
HTML (*.htm)	The information is exported as standard HTML information. Files created with this option are viewable in standard web browsers.
XML (*.XML)	The information is exported as XML data, along with a style sheet. Files created with this option are viewable in most web browsers.



<u>Export Type</u>	<u>Result</u>
Excel (*.XLS)	The information is exported as a Microsoft Excel spreadsheet. Excel or any program capable of reading Excel spreadsheet files can be used to view and manipulate the information.
Text (*.TXT)	The information is exported as a standard tab-delimited text file. The resulting file can be viewed in many applications, including Notepad.

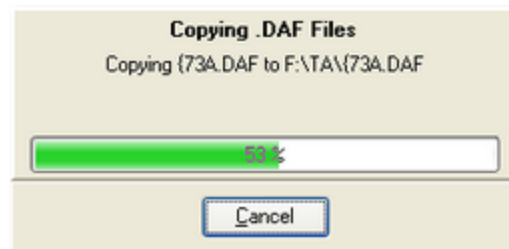
## 4.6 Copying Carts (Audio Files)

You can use iDAF to copy audio files from one location to another. Select one or more carts on the list, then [Right-Click] and select either "Copy Carts to Another Location" or "Copy Carts to Another Location as DFF" from the pop-up menu.



Cart List Pop-up Menu

You will be prompted for a target folder and the copy process will begin. While the copying is ongoing, a status dialog is displayed, advising you of the progress of the copy procedure.



If you are copying multiple files, clicking on the [Cancel] button of the status dialog will stop the copy process as soon as the current file has been processed. If an error occurs during the copy process, an error dialog will appear and you'll be prompted as to whether or not to continue copying files.

## 4.7 Editing Carts (Pro Version)

For registered copies of iDAF (Pro version), editing of cart headers is available. To edit a cart header, [**Double-Click**] on the item you wish to edit. You can also use the [**F3**] function key. The cart edit dialog appears, similar to the example shown.

You can edit the cart description, agency field, log length, start date, end date, AUX Mark, audio length (shorten only), distribution and gain trim. For multi-cut carts, you can edit the cut rotation and next to play setting.



Items that can be edited vary by the type of cart you are editing. Not all items are available for all types of carts. If the cart has a version 1.4 header, additional tabs and fields are available for viewing (all versions) or editing (Pro Version only).

Once you have completed your edits, click on the [**Commit**] button to save the changes. iDAF saves the revisions and creates the new cart as safely as possible, first making a copy of the original audio file, writing the updated header information, and finally deleting and renaming the original audio file (if saving as .DAF files) or renaming the temporary file to .DFF (if saving for ACP import).

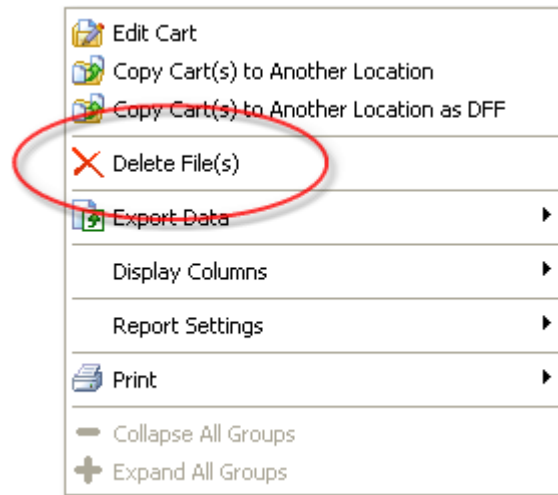


You can also open for viewing (all versions) or editing (Pro Version only) a single .DAF file without having to select it from the displayed audio list. Select the menu item **File | Open Single .DAF File** to display a file selection dialog.

Upon selecting the file, the standard cart edit dialog (shown above) appears. Note that some limitations apply to editing a multi-cut cart, including not being able to edit cut rotations or update the master start and end date fields.

## 4.8 Deleting Carts (Pro Version)

Registered users can select one or more audio items from the list and delete them, if desired. To delete selected carts, choose the items to be deleted, using standard selection methods. **[Right-Click]** on the inventory display, and a menu appears.



Cart List Pop-up Menu

Select the **"Delete File(s)"** menu item. You will be prompted to confirm that you wish to delete the files and warned that deletion is permanent and not seen by any host audio system automatically.



If you delete files from a folder that is being actively used by a DCS or Maestro unit, including ACP folders, the DCS or Maestro unit will not be aware of the deletions until the folder inventory is re-scanned by DCS at startup or by Maestro when the inventory service is shutdown and restarted. XStudio will detect the change and update its inventory automatically.

Cart deletion functionality is intended for maintenance of off-line audio inventory rather than an active inventory. For instance, if you had copied a number of inactive audio files to an archive and later decide that you wish to delete some of them, using iDAF to first scan the archive folder, then review and select items is considerably easier than just looking at the file names in a file explorer and trying to figure out whether or not they should be deleted.

## 4.9 Printed Reports (Pro Version)

The Pro version of iDAF includes a powerful, user-customizable printed report system. Content of the report is controlled by the displayed data, making it a true WSISYG printing system.

Print preview with the ability to customize settings like the report title, margins, page orientation, and more is included, along with customizing dialogs available either from the main display or from within the print preview window.

Custom settings can be saved to a user-defined file and later re-used, so once you have tweaked a report to print exactly as you want it, you can save those settings and later recall them.

### **Setting Up a Report**

The main task in setting up a report is deciding which data to print. The information printed is controlled by the displayed audio list - columns that are displayed, column widths, sorting, grouping, and filtering. So, the first thing to do is organize the audio list display (also known as a grid) so that just the information you want printed is displayed. For additional information on organizing the audio list display, see the section on [Working with the Cart Display](#).



Column widths are important in setting up the display. If the **File Path** column, for instance, does not display the full path because the column width is too narrow, what you are seeing on-screen is what the printed report will look like. You may wish to adjust column widths so all the information for a given item is displayed. You can **[Right-Click]** on a column header (the title or label for the column) and select the **'Best Fit'** menu item to have the application automatically adjust the selected column's width so all information is displayed.

The color scheme of the displayed data is preserved when printing a report. You can change the visual appearance on-demand to create the desired look for a printed report.

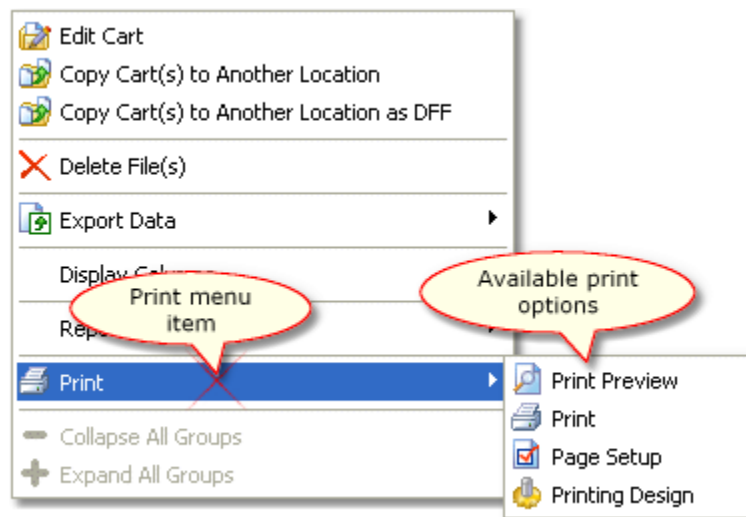
## Previewing, Page Setup and Changing Report Design Settings

Once you have the data you wish to print displayed in the way you wish it to appear when printed, you're ready to either simply print the report or preview it and adjust some of the other settings.

To initiate print actions, use the main menu (**File | Print**), the print toolbar or the cart list pop-up menu, as shown here.



Print Toolbar



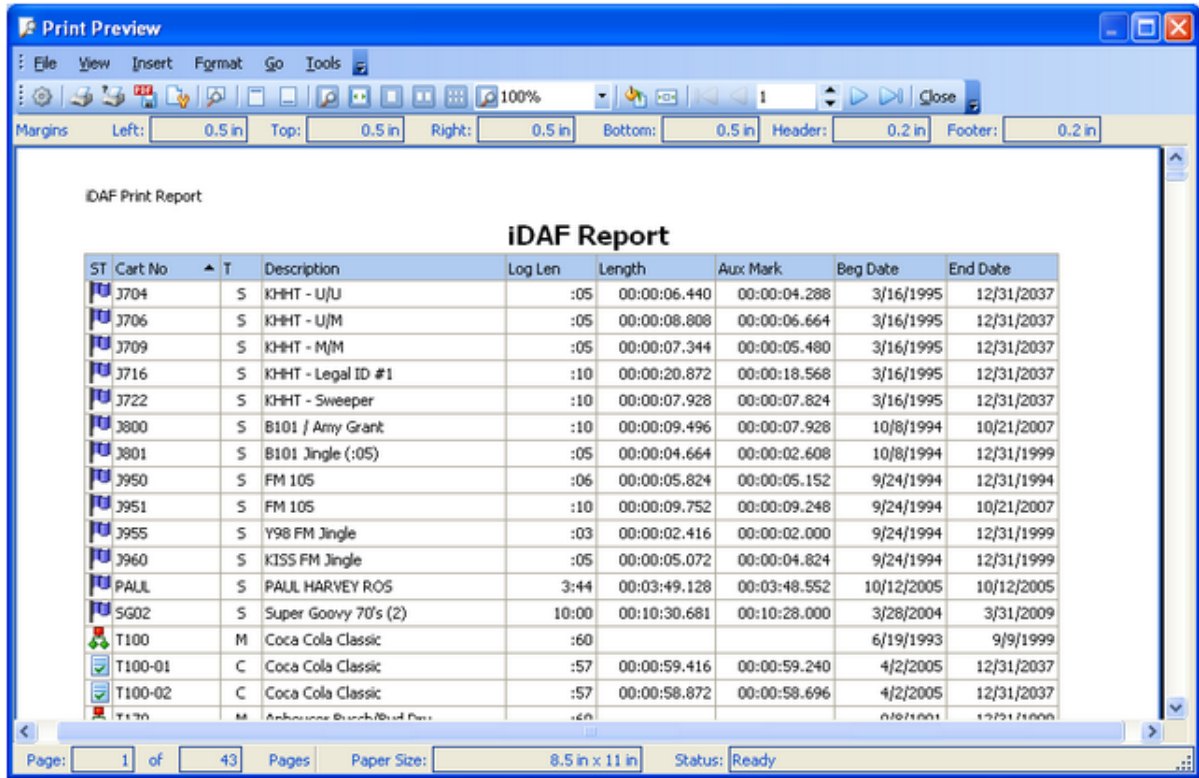
Cart List Pop-up Menu

Changing page setup information and modifying design settings are available two ways; 1) from the main menu, print toolbar or the cart list pop-up menu on the main display; and 2) from within the Print Preview window.

## 4.9.1 Print Preview

You can preview a printed report any time you have some data displayed in the audio item list on the main display. Access print preview from the main menu (**File | Print | Print Preview**), the Print toolbar, or from the pop-up menu displayed when you **[Right-Click]** anywhere on the displayed data (**Print | Print Preview**).

Each time you run print preview, the report is regenerated. A status window appears during the generation, indicating progress of the report generation. When the report has been generated, the preview dialog appears.



The preview display shows pretty much what you will get when printing, with the exception that if the target printer is not a color printer, colors will be grayscales.



On Windows XP and above, you can save (export) the report directly to a PDF file. Click on the **[Export to PDF]** button or select the menu item **File | Export to PDF**. A dialog appears, allowing you to select PDF options, followed by a prompt to select a file name.

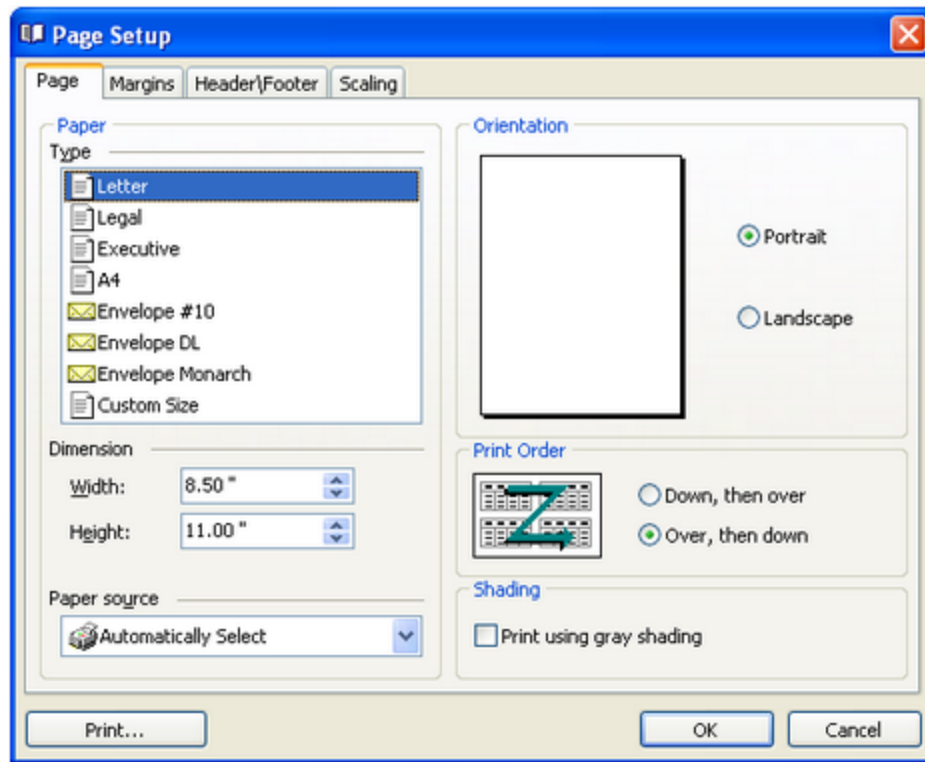
Within the preview display, you can change the appearance of the report before printing or exporting to PDF, including page setup parameters and print design parameters.

## 4.9.2 Report Page Setup

The report page setup dialog can be invoked from either the main display or from within the print preview window. The display consists of a number of tabbed areas that allow you to set the page type, orientation, margins, headers and footers, and scaling information. In the samples shown, areas of interest can be selected and pop-up information about the area will appear.

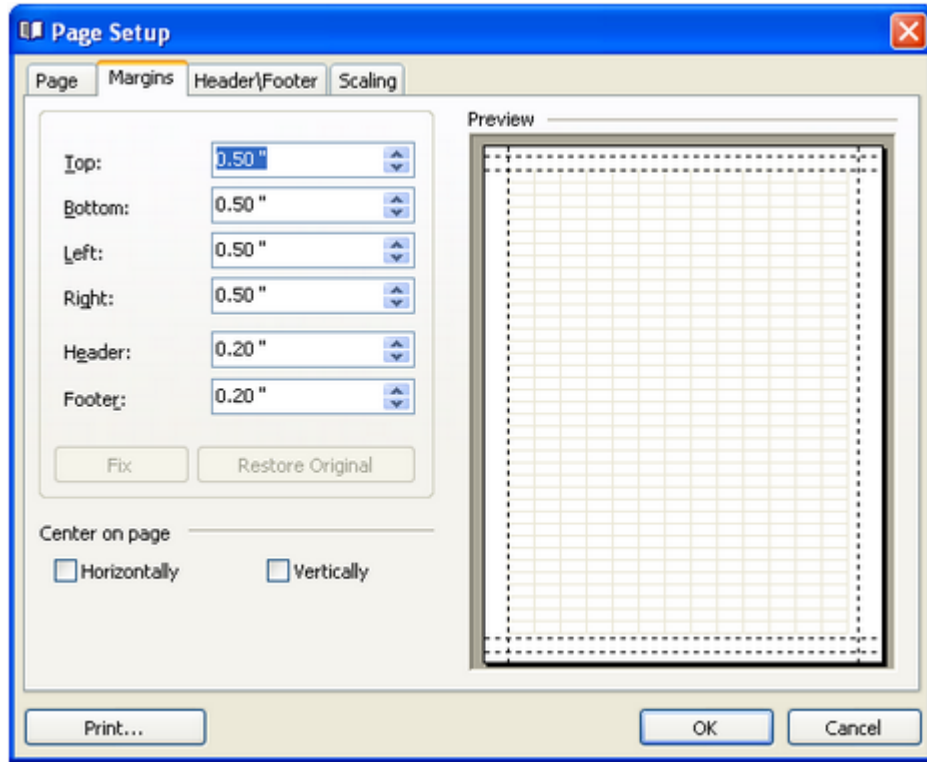
### ***Page Information***

The Page tab allows you to select a paper type, manually adjust the paper size using custom paper sizes and select the paper source location. You can also set the paper orientation (portrait or landscape), dictate how a report that is more than one page wide will be printed, and enable gray shading of the printed report.



## Print Margins

The Margins tab provides the means to set the left, right, top and bottom page margins. These settings essentially define the area of the page where data can be printed. The header and footer margins are set above and below the top and bottom margins, respectively, and define the area where any text common to all printed pages will appear. Typically, the header and footer margins should be set at or above your printer's defined print area margins. For a typical HP LaserJet printer, the header and footer margins should be set at 0.25" (1/4 inch).

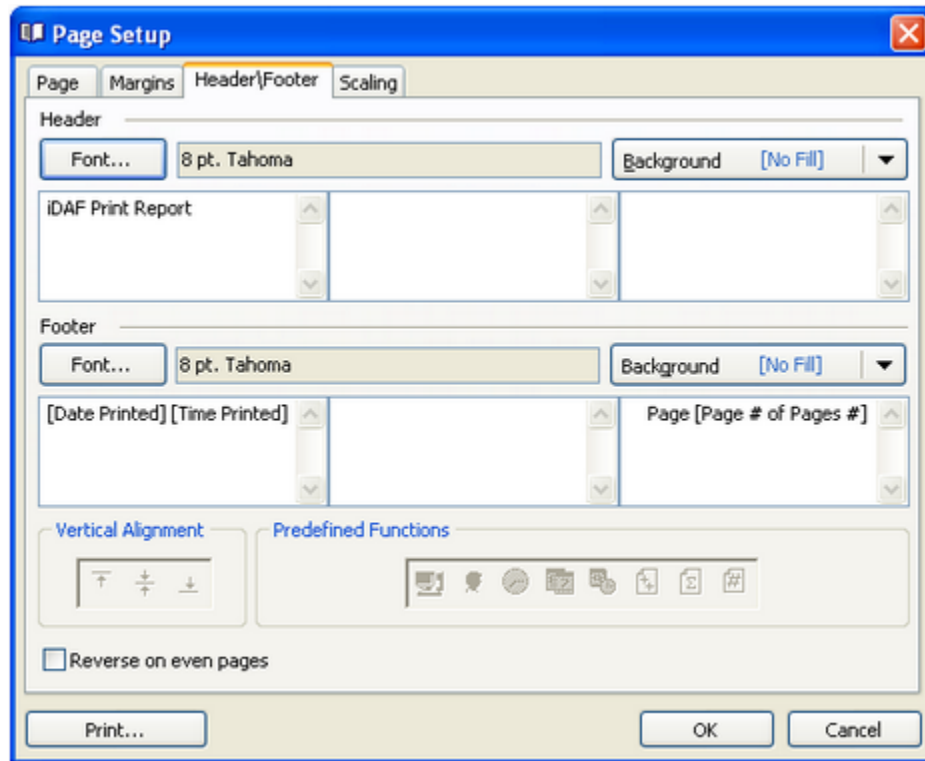


If the content being printed is less than the available page width within the margins, you can force the printed material to be centered on the page horizontally. The same option applies for vertical centering.



## Headers/Footers

The Header\Footer tab provides the means to place text that will appear on every page of the report. Both the header and footer are divided into three (3) sections, each of which can contain text of your choosing. Text can be static - that which you enter - or can include predefined functions that insert such things as date and time printed, page number, total number of pages, and user name.

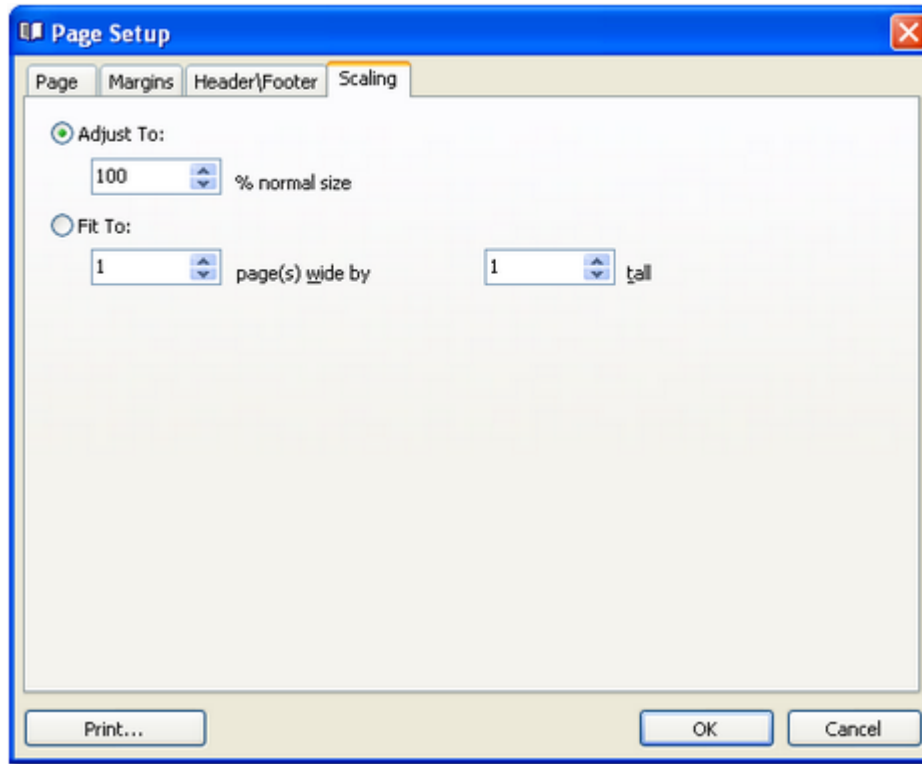


Font attributes, including type, size, style and color, can be set independently for the header and footer areas. You can set a background fill color and/or texture the header and footer.

Each text area can be aligned vertically (centered is the default), and you can have the left and right text panels reversed for even-numbered pages.

## Scaling

The Scaling tab allows you to resize the report content, either on a percentage of original size or by forcing the report to fit on a certain number of pages wide by pages tall. The default setting is "Adjust to:" 100 % Normal Size.



To fit all columns on a single page width, you should first set the Auto-Width property, located in the [Print Design dialog](#) on the Behaviors page. Once that setting is made, you can further adjust scaling properties to fit your needs.

### 4.9.3 Report Printing Design

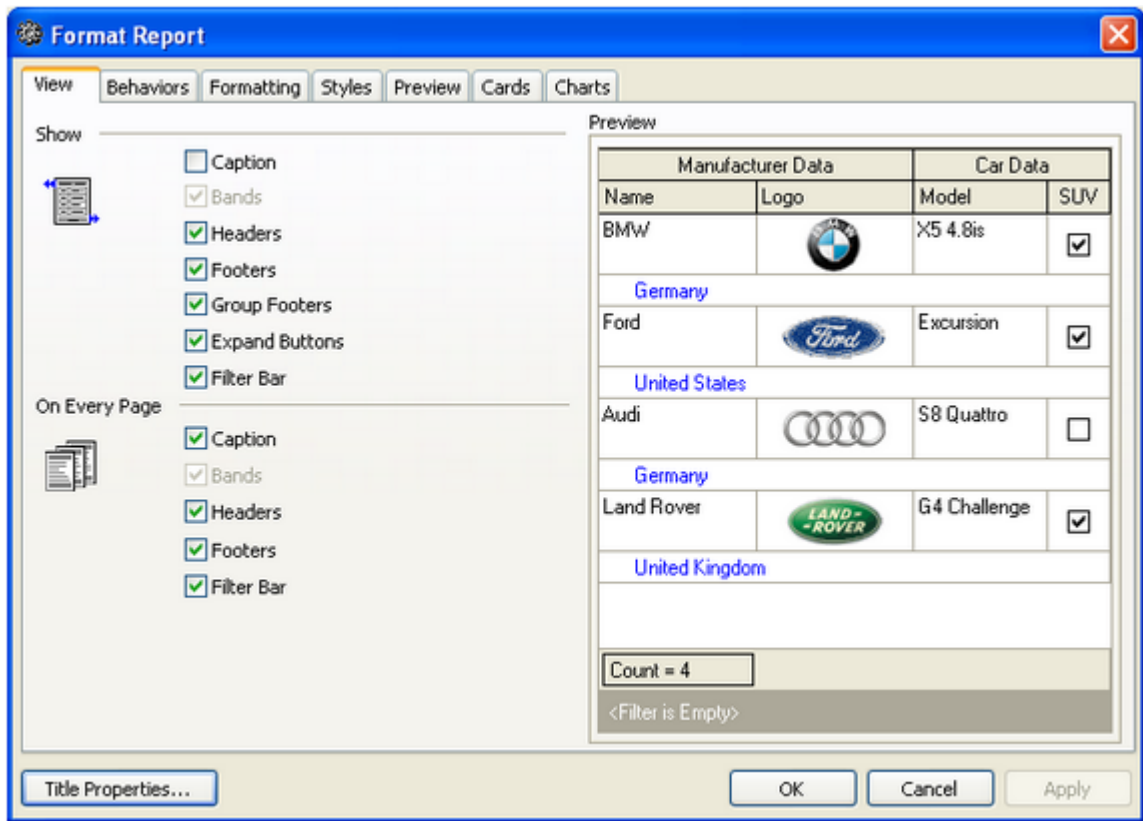
The report print design dialog can be invoked from either the main display or from within the print preview window. The display consists of a number of tabbed areas that provide the means to modify how information in the report is displayed. Areas of interest include the report title, whether or not only selected (highlighted) information is printed, and whether header, footer, grouping and filter information is printed on the report.

The design dialog includes a Preview window that shows the effects of changes you make immediately, so there's no need to change the design, run the report and then change the design again.

Below are samples of the dialog areas you can use to modify the report appearance and content. Note that a couple of the pages (tabs) you will see on the display are not shown here, as they relate to report types that are not used at present.

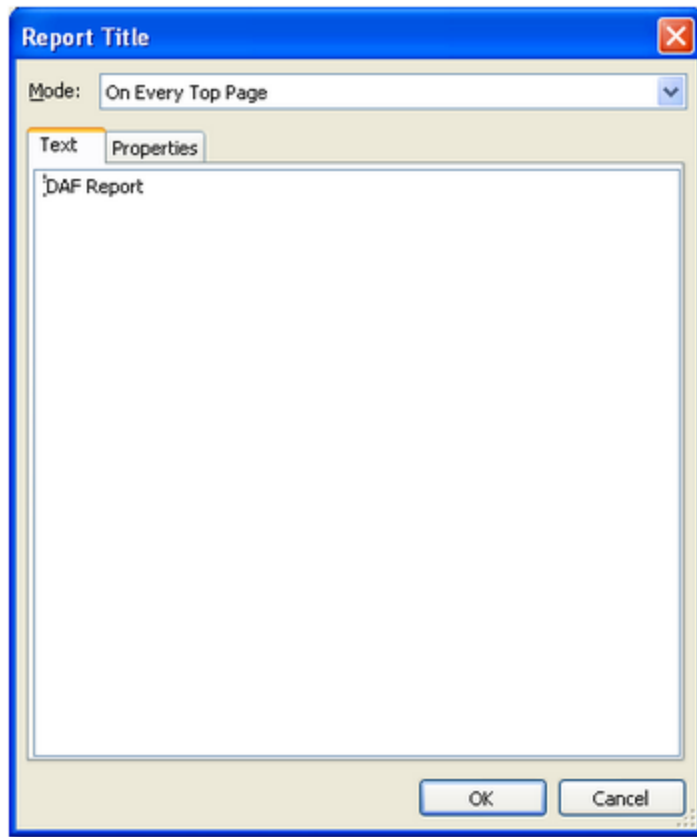
#### View

The View tab contains settings that control which parts of the displayed audio inventory list are printed. For instance, you might not want the cart filter information that's displayed on-screen to be printed. You can also control whether or not items are printed on every page or just the first page of the report.

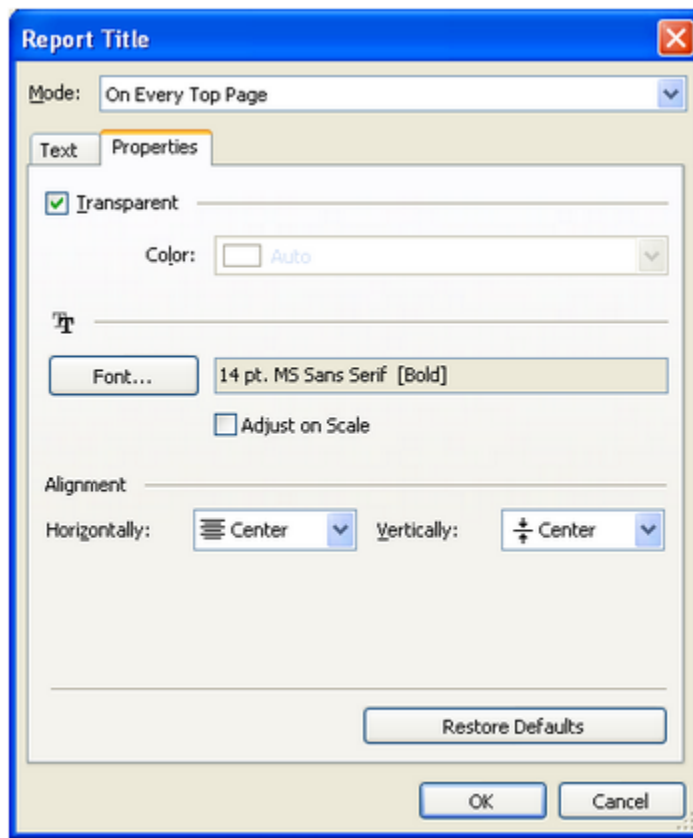


## ***Title Properties***

From all tab areas, you can use the [Title Properties] button to modify the report title text and settings. When selected, a dialog similar to the following appears:



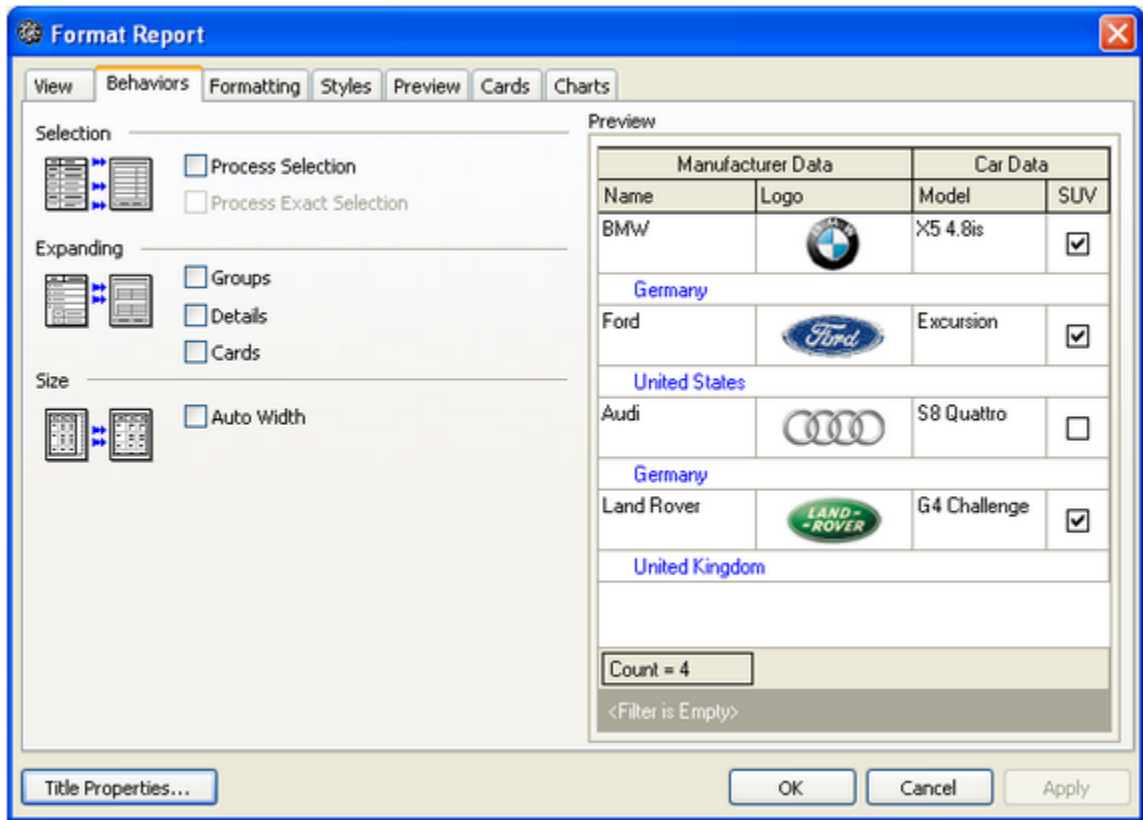
The Text tab, shown above, is where the report's title, if any, is entered. The text entered here will appear on the first page of the report, typically in large type. Do not confuse the title with header and footer text, which appears on every page and generally contains information like date printed, page number, copyright information, etc.



The Properties tab for the report title, shown above, is the place to adjust the font size, style and color for the report title. You can also set a title background color and change the title alignment.

## Behaviors

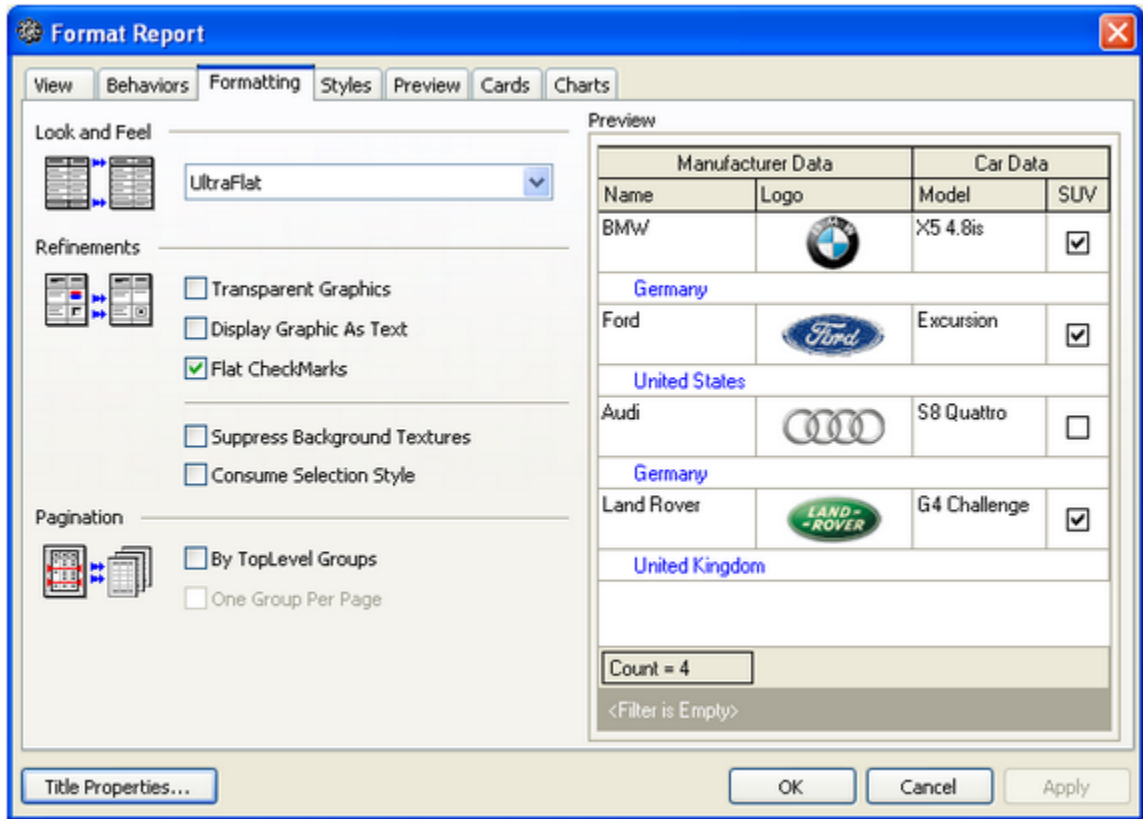
The Behaviors tab contains settings that allow you to control how data within the inventory list is printed. You can choose to print only selected inventory records using the Selection items. If you have displayed data that is grouped, you can force all groups to be expanded for printing by checking the "Groups" item in the Expanding section. The default for this behavior is to print exactly how things are displayed on-screen, meaning that some groupings might be expanded to show data while other groups are displaying only the group information.



If you want to force the printed report to fit horizontally on one page, regardless of the number of columns of information, check the "Auto Width" button in the Size area. In the case where there are more columns of information than would normally fit on a page, checking "Auto-Width" causes the report generator to reduce the size of the text until all information can be fit on one page width. Using this option can cause the printed data to be very small - you may wish to consider either removing columns from the display or changing the paper orientation to landscape.

## Formatting

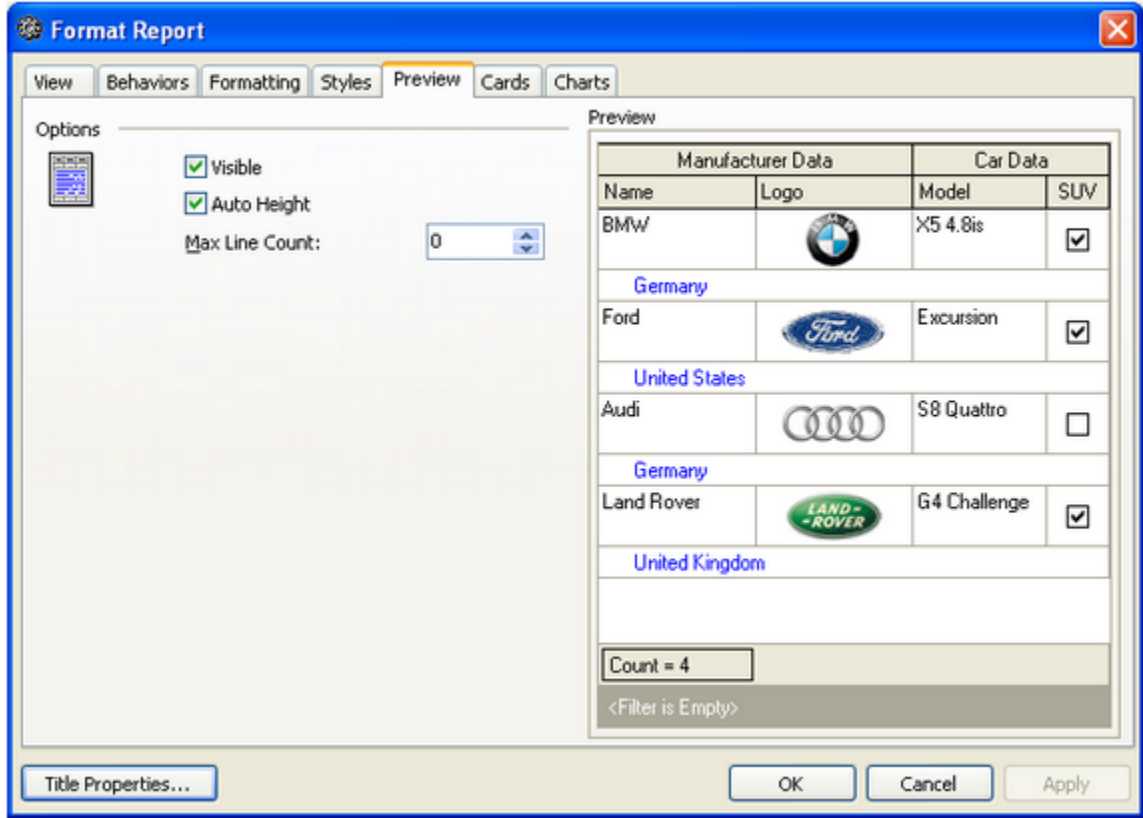
The Formatting tab contains settings that allow for additional control over the printed report's appearance. You can change the appearance to be more "3D-like" using Look and Feel settings, change how check marks are printed, and display text instead of actually printing a graphic.



To see the effect of these settings, change a setting a look at the Preview window, which will show the effect of the changed setting.

## Preview

The Preview tab contains settings that determine whether or not a data row's preview field is printed and, if so, how it's printed. These settings are applicable only if the displayed information contains a preview field.



At present, preview fields are not used in iDAF.



## 4.9.4 Saving Report Settings

Once you have spent time customizing report settings, you can save them to a file and later restore those settings so you don't have redo the customizations every time you wish to run the report formatted a certain way.



Not every single setting you change is necessarily stored to the settings file. Only those deemed as most common or important are saved. You should check restored settings by using the print preview window before actually printing.

Saving and restoring report settings is accomplished from the main display. Select the menu item **File | Report Settings | Save Report Settings to File** to save and select **File | Report Settings | Restore Report Settings from File** to restore.

In both cases, a dialog is displayed, allowing you to choose the file name for storing or retrieving report settings. If you are saving settings and choose an existing file, the old settings will be replaced by the current settings with no further warning.



If you are using iDAF on an operating system prior to Windows 2000 and attempt to load a report settings file created with a version of iDAF running on a Windows 2000 or newer operating system, settings may fail to load because of incompatible report settings file formats. A message will appear indicating the failure and the report settings are reset to the default values.

As a default, report settings files are stored in the iDAF application folder with an extension of **".RSF"** (Report Settings File). You may save settings to other folders if desired.

# Reference

**Part**



This section contains more detailed background information on a number of key subjects that will help you to gain a better understanding of how iDAF works.

Studying these sections is not absolutely essential but it will make it much easier for you to use iDAF more efficiently and effectively.

## 5.1 Cart Masks Explained

Cart masks are used to identify carts (audio files) that might be grouped together. A cart mask must be exactly 4 (four) characters in length. Mask entry dialogs will not allow entries that are too short and will not accept more than 4 characters entered.

The "?" (question mark) is a "wildcard", meaning a letter or number is valid in its position in the mask. This is the only wildcard character allowed for a cart mask - all other characters will be interpreted literally.

Valid characters for a cart mask, besides the "?" (question mark) include the letters **A .. Z**, the numbers **0 .. 9** and the characters "{" and "}".

A valid cart mask will include one or more "?" characters (although it doesn't have to) and other letters or numbers that match up with cart types that you wish to have grouped together. Examples of valid cart mask include:

<b><u>Mask</u></b>	<b><u>Result</u></b>
C???	Carts beginning with the letter "C" and any 2nd, 3rd and 4th character will be included.
PR??	Carts with the first two characters of "PR" and any 3rd and 4th character will be included.
?R??	Carts with any first character, a second character of "R" and any 3rd and 4th characters will be included.
Z?A?	Carts with a first character of "Z", any 2nd character, a third character of "A" and any 4th character will be included.



A cart mask of "?????" is the same as saying "any cart number is valid" and should not be used, as all carts would match such a mask.

Combining a number of cart masks for use in a cart category will group all carts that meet at least one of the cart masks. For instance, you could have a filter called "R Carts" that has 4 cart masks - "R????", "?R???", "??R?" and "???R". The result of using this cart filter would be that every cart in the inventory that has the letter "R" in any character position (1st, 2nd, 3rd or 4th) would be a match.

## 5.2 Customizing the Display

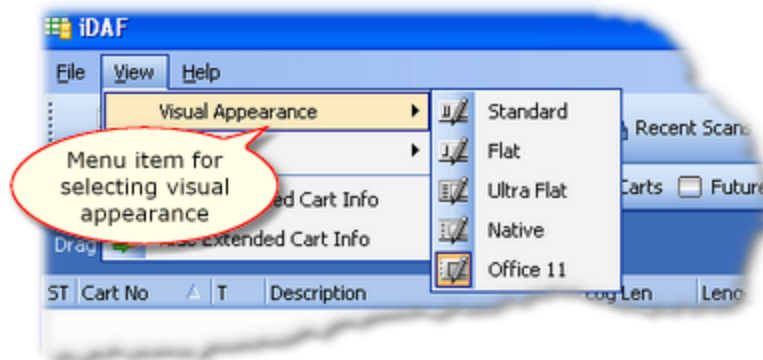
There are several things you can do to customize the size and appearance of the program. In most cases, your customizations will automatically be saved and used again the next time you use the program. Some customization elements can be saved separately on-demand and then re-used on-demand.

### Application Size & Position

When you exit the program, its current size and position on your screen is automatically saved. The next time you use the program, these settings are restored.

### Visual Appearance

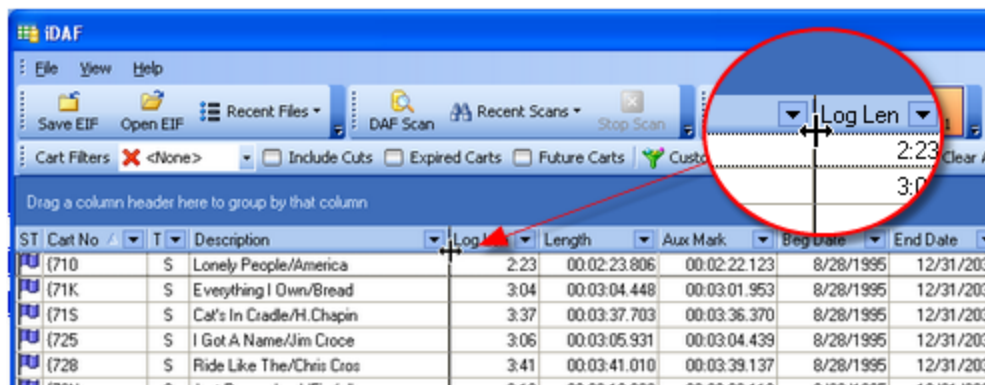
You can change the overall "look and feel" of the program by selecting one of the available styles from the main menu's **View | Visual Appearance** menu item.



The style you select will be saved and applied the next time you use the program.

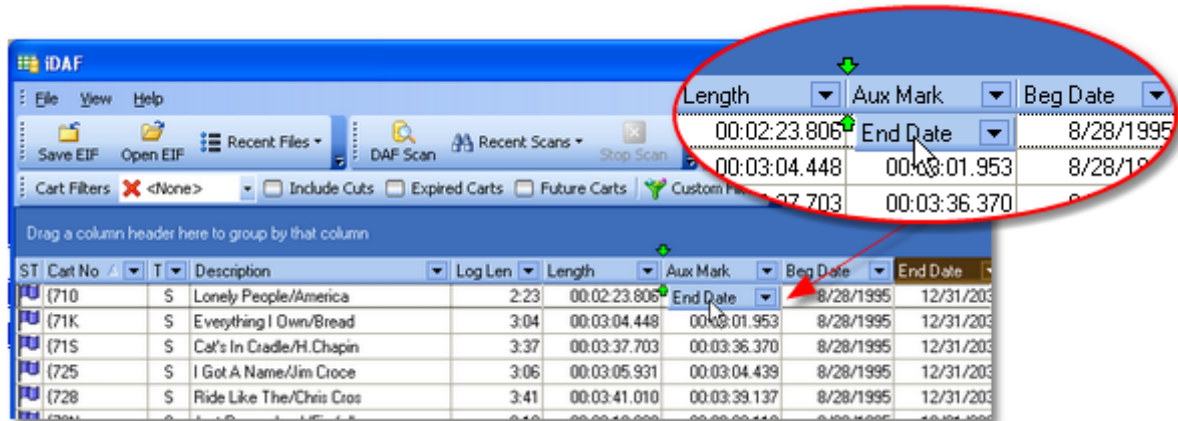
### Column Size and Position

You can resize each column to suit your preference by floating the mouse over the end of the column header text until the mouse cursor changes to a sizer - this occurs when the mouse pointer is positioned over the column heading separator. [**Left-Click**] and hold the mouse button down while moving the mouse left or right to narrow or widen the column.



Changing column width

You can move a column from one place to another - click and hold the left mouse button down on a column header, then drag it to its new position. Markers appear as you drag the column, indicating where it will be placed.

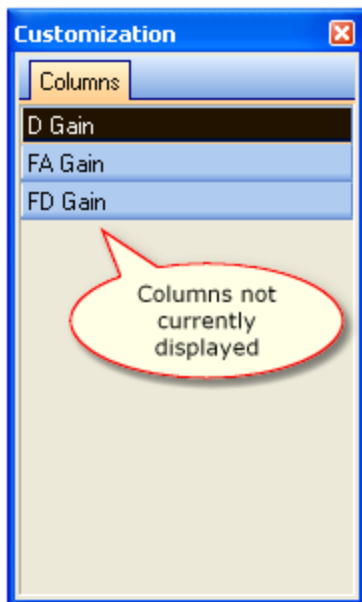


Moving a column

Column size and position is automatically saved and restored from one session to the next. You can also save and restore column settings on-demand - click on the toolbar button **[Column Settings]** for a menu of available options.

### Adding, Removing Display Columns

As a default, there are several columns of information presented, along with some other columns that are hidden. Hidden columns can be made visible, if desired, with a **[Right-Click]** on the data display and selecting the menu item **"Field Chooser"**.



Column customization dialog

The customization window displays a list of columns that are not currently used. You can drag a column from the list onto the view header area to add it to the displayed information. Conversely, drag a column header from the view into the customization window to remove it from view. Column positions, along with their size, are automatically saved when you exit iDAF and restored when you start the program again.



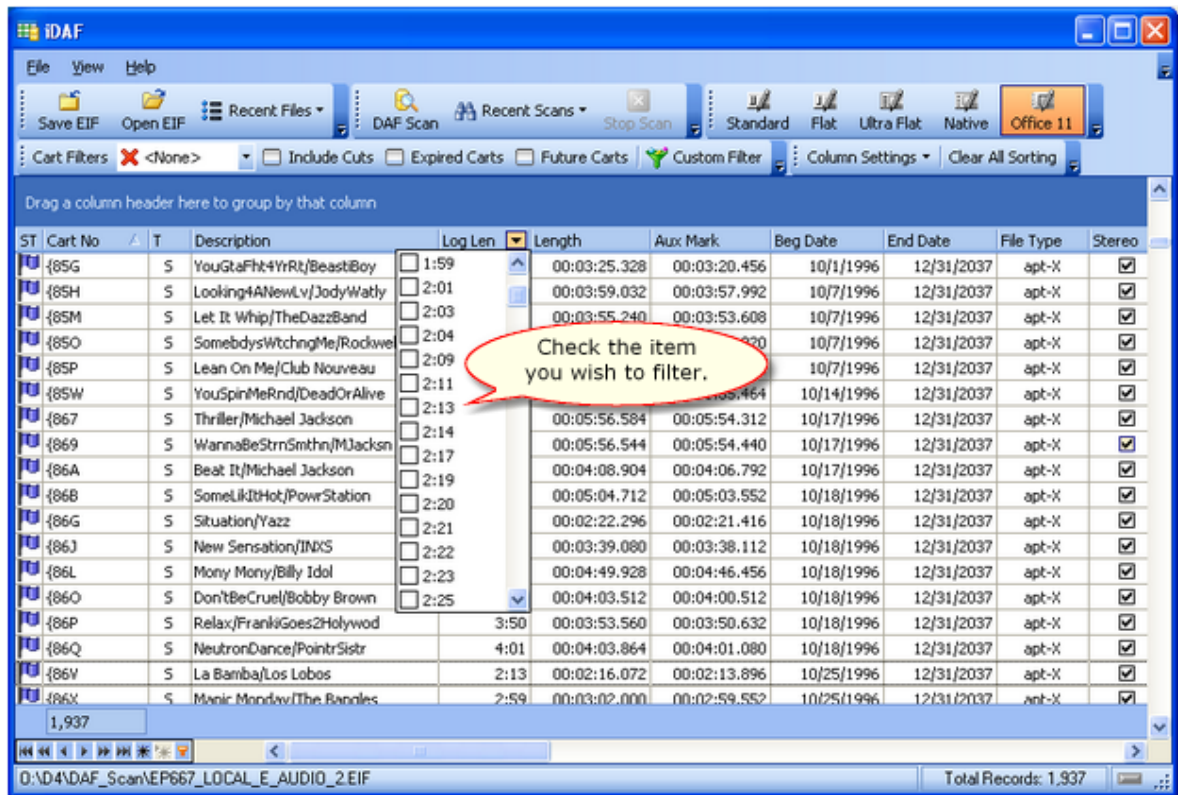
You can save and restore sets of column settings, which includes visible columns, their position and size, on-demand, using the data display settings toolbar.

## 5.3 Filtering Displayed Data

Filtering of data is a sophisticated way of reducing the number of records you see on-screen without affecting the original scan results. For instance, it might be useful to look at cart records that have just certain description, agency or log length field content.

### Column Filtering

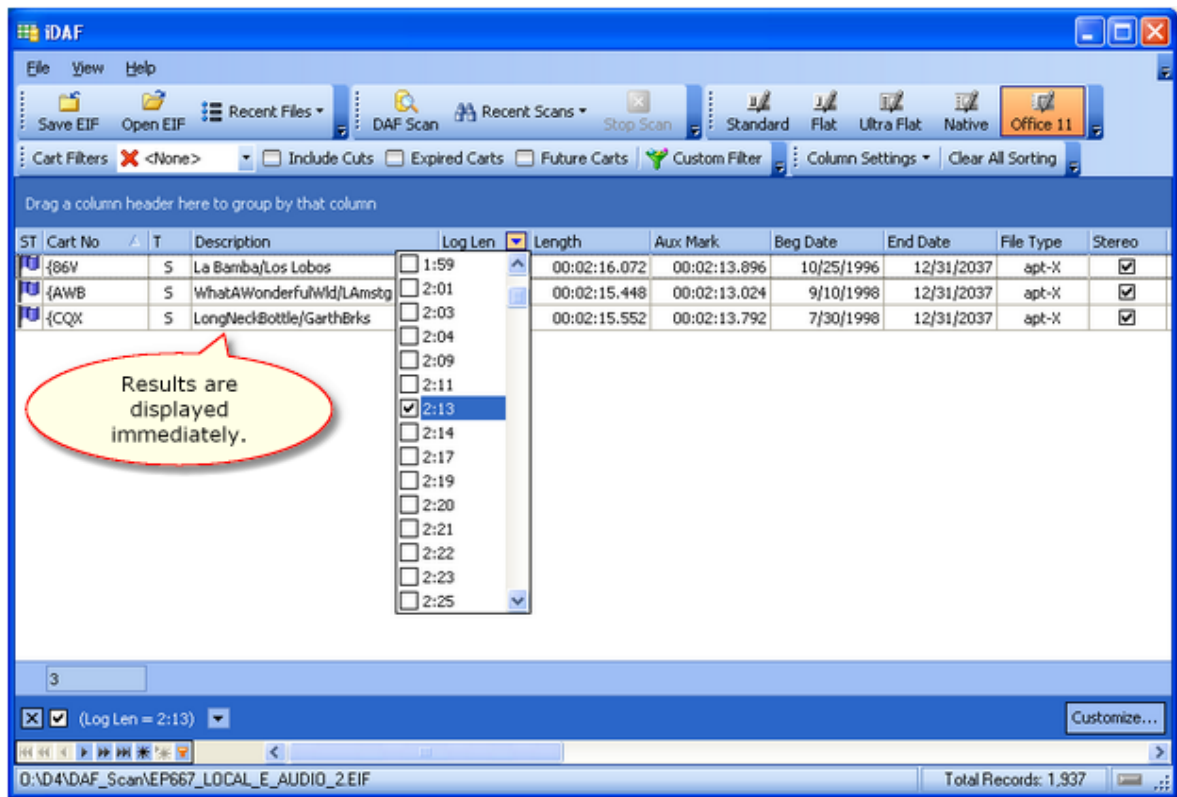
The simplest filter usage is to click on the down-arrow icon located in the column heading. A drop-down checklist is presented and you can select one of the listed items to filter for. The result is only items that match the "filter expression" are displayed.



In the example shown, the user is working with the Log Length column and checks "2:13". The filter is applied immediately and only carts with a Log Length field value of "2:13" are displayed.



On Windows 2000 and above, you can select (check) multiple items in column and see the results immediately. In our example, you could check all Log Length items between 2:09 and 2:19 to see a broader group of results.



You can filter on more than one column if desired. Simply select a value from another column's drop-down list to further reduce the number of carts displayed.

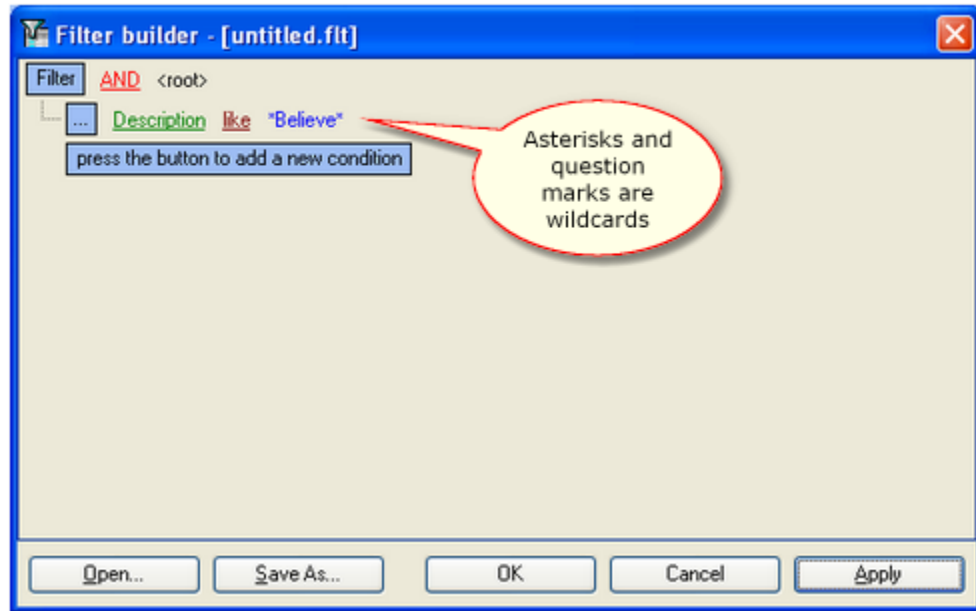


When selecting items on an additional column, all available values are displayed, not just those possible values for items contained in the displayed results. This means you could select an item in the additional column and no data would match the combined filter criteria.

When filtering on multiple columns, **every column's filter criteria must be met** for a cart record to be displayed. Multiple items in a single column is the equivalent of an SQL "or" statement; filtering on multiple columns is the equivalent of an SQL "and" statement.

## Custom Filters Using the Filter Builder

More complex filters can include multiple values, multiple columns and wildcards. To create a filter of more complexity, click on the **[Custom Filter]** button on the toolbar. A dialog is displayed that allows you to create the filter criteria.



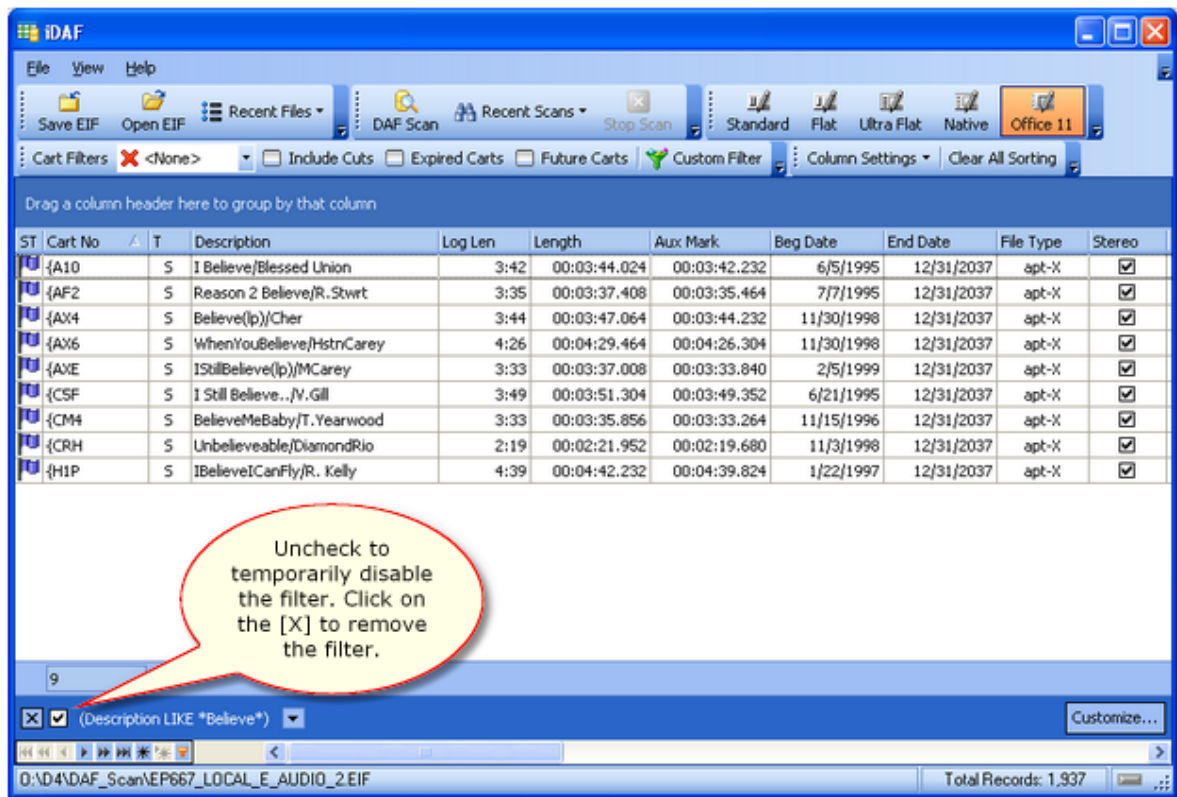
In the example shown here, the Description column will be filtered. Only the records that have the word "**Believe**" somewhere in the description will be displayed. Note the use of a wildcard on either end of the word "Believe". The asterisk (\*) means "any combination of characters". A second wildcard available is the question mark (?), which means "any single character". Using wildcards, you can construct some fairly complex filters.



Use wildcards at the beginning and end of values to select records containing the value anywhere in the field, rather than just the beginning of the field.

To filter number-only carts, you can use the Cart Number field and apply a filter that specifies the cart number value as a numeric range. A sample filter is supplied with iDAF and is located in the application folder.





Once a filter has been applied, you see the results in the view window. You can temporarily disable the filter by clicking on the check box at the bottom of view (uncheck the item). To remove a filter completely, click on the [X] adjacent to the filter description (at the bottom of the view).

## Saving Custom Filters

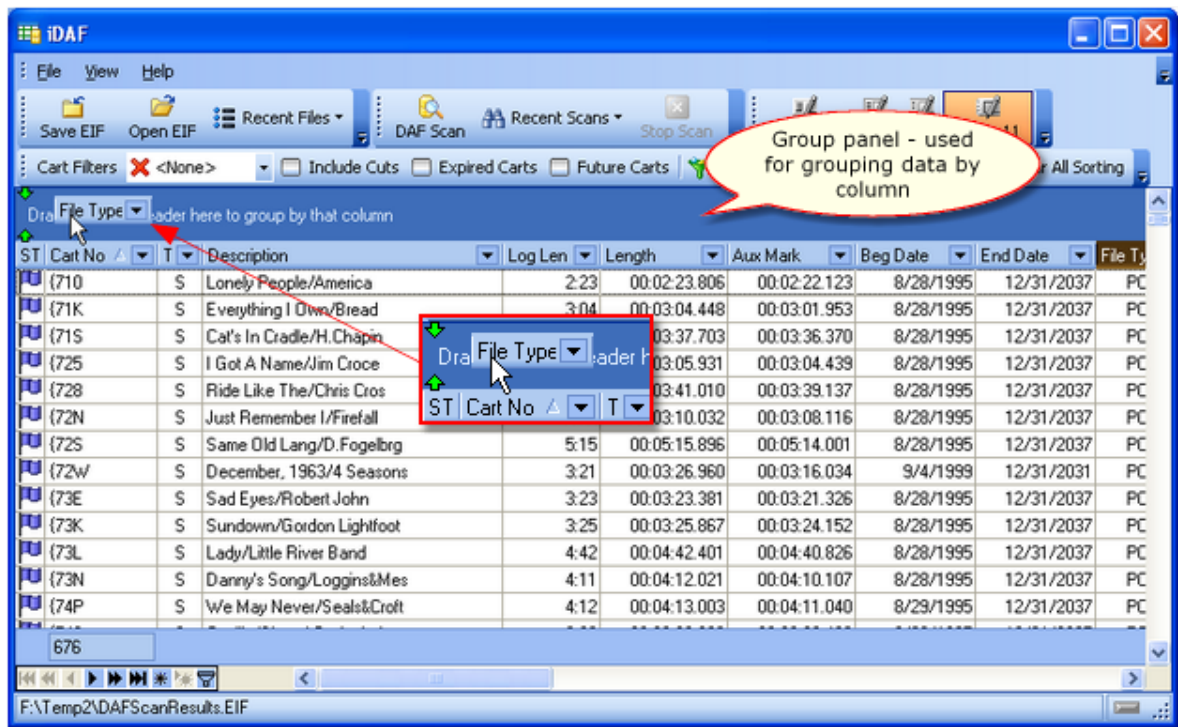
You can save custom filters for re-use. When your custom filter is producing satisfactory results, click on the [Custom Filter] button on the toolbar or the [Customize] button in the filter status area to display the custom filter dialog. Select the [Save As] button and enter a file name. Click on the [Save] button save your settings to a file.

## Using a Saved Custom Filter

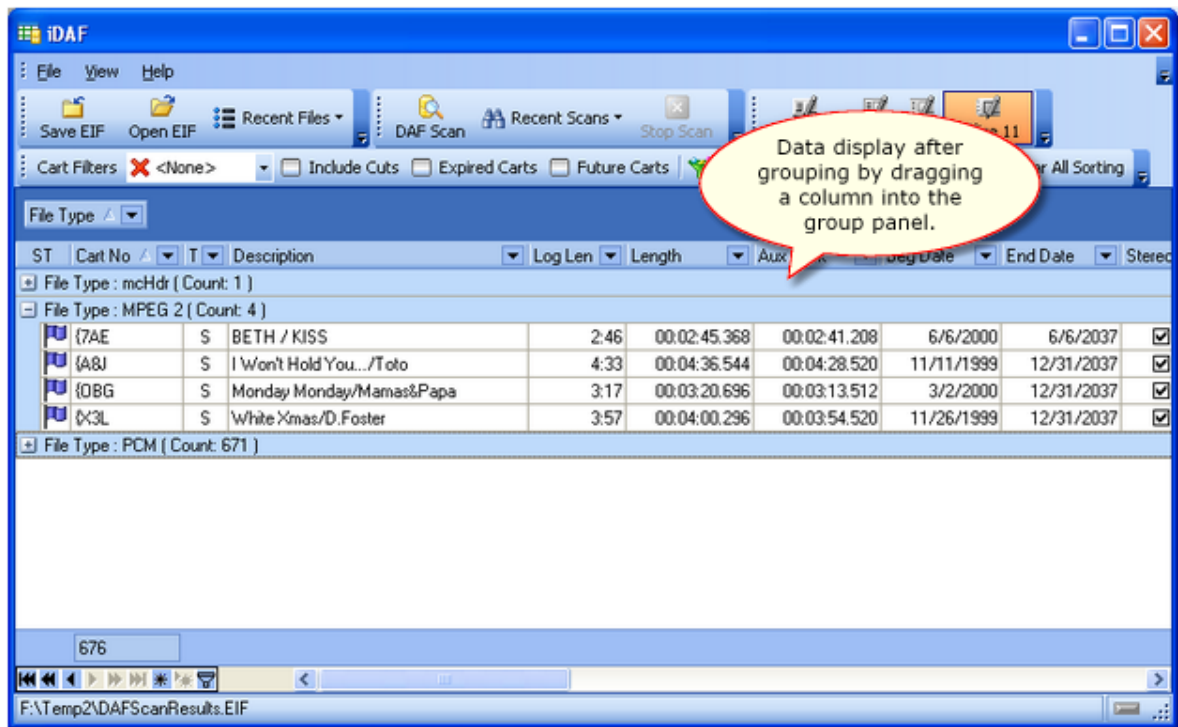
To apply a saved custom filter to displayed data, click on the [Custom Filter] button on the toolbar. When the custom filter dialog is shown, click on the [Open] button and select the saved custom filter. The custom filter will be loaded and displayed. Click on the [OK] button to apply the filter.

## 5.4 Grouping Displayed Data

You can group cart data based on the contents of a particular column. To group, **[Left-Click]** and hold the mouse button down on a column heading, then drag it to the group panel above the data display and release the mouse button.



In the example shown here, the grouping will be done on the "File Type" column, by dragging the column header into the group panel. In the result grouping, the "MPEG" group has been expanded to review just those items.



You can group multiple columns, too. The effect is groups within a group. For instance, you could add the Sample Rate column to the File Type column - the result would be a group for each sample rate under each file type.

### **Removing Data Grouping**

To remove a grouping column, select the column you wish to remove in the group panel, hold the left mouse button down, drag the column out of the group panel and drop the column. You can also **[Right-Click]** on the column you wish to remove and select **"Remove from Grouping"** on the pop-up menu.

## 5.5 Keyboard Shortcuts

There are a minimal number keyboard shortcuts implemented in iDAF. The table below shows available shortcuts and their meaning.

---

**NOTE:** Where applicable, special mouse actions are also listed.

---

<b><u>Shortcut</u></b>	<b><u>Meaning</u></b>
<b>[F1]</b>	Help. Launches the help file.
<b>[F3]</b>	Displays the Record View / Edit DAF dialog for the selected cart (audio file). In the Pro version, editing of the cart header contents is enabled.
<b>[Ctrl-X]</b>	Exit. Closes the application.
<b>[Tab], [Shift-Tab]</b>	Tab key. Move from one control to another on the main display. You will be cycled through the report view selection, filter selection, template selection and the report data view. <b>[Tab]</b> moves forward, <b>[Shift-Tab]</b> moves backward.

## 5.6 Sample Printed Report

If you have purchased and registered iDAF (the Pro version), you can print lists of carts, exactly as they appear on-screen. See the topic [Printed Reports](#) for more information.

IDAF Print Report

**Music Carts Only**

ST	Cart No	T	Description	Log Len	Length	Aux Mark	Beg Date	End Date
010	S	JeremyToback/YouMakeMeFe	.00	00:03:44.648	00:03:43.832	7/8/1999	12/31/2037	
018	S	PhilCollins/YouInMyHeart	.00	00:04:15.376	00:04:13.952	8/6/1999	12/31/1999	
701	S	The Things We Do 10cc	3.14	00:03:14.471	00:03:12.577	8/28/1995	12/31/2037	
710	S	Lonely People/America	2.23	00:02:23.806	00:02:22.123	8/28/1995	12/31/2037	
710	S	Lonely People/America	2.23	00:02:23.480	00:02:21.800	8/28/1995	12/31/2037	
716	S	Spooky/All. Rhythm Sect.	4.53	00:04:52.880	00:04:51.152	8/28/1995	12/31/2037	
71B	S	Let Your Love/Bellamy Br	3.05	00:03:05.320	00:03:03.600	8/28/1995	12/31/2037	
71B	S	Let Your Love/Bellamy Br	3.05	00:03:05.320	00:03:03.600	8/28/1995	12/31/2037	
71B	S	Let Your Love/Bellamy Br	3.05	00:03:05.320	00:03:03.600	8/28/1995	12/31/2037	
71C	S	Hit Me With/Pat Benatar	2.49	00:02:49.008	00:02:48.056	8/28/1995	12/31/2037	
71C	S	Hit Me With/Pat Benatar	2.49	00:02:49.008	00:02:48.056	8/28/1995	12/31/2037	
71F	S	Fooled Around/Elyn Blahp	2.53	00:02:53.128	00:02:51.936	8/28/1995	12/31/2037	
71F	S	Fooled Around/Elyn Blahp	2.53	00:02:53.128	00:02:51.936	8/28/1995	12/31/2037	
71F	S	Fooled Around/Elyn Blahp	2.53	00:02:53.128	00:02:51.936	8/28/1995	12/31/2037	
71H	S	Soul Man/Blues Brothers	2.57	00:02:57.303	00:02:55.889	8/28/1995	12/31/2037	
71K	S	Everything I Own/Bread	3.04	00:03:04.448	00:03:01.953	8/28/1995	12/31/2037	
71K	S	Everything I Own/Bread	3.04	00:03:04.032	00:03:02.888	8/28/1995	12/31/2037	
71K	S	Everything I Own/Bread	3.04	00:03:04.032	00:03:02.888	8/28/1995	12/31/2037	
71K	S	Everything I Own/Bread	3.04	00:03:04.032	00:03:02.888	8/28/1995	12/31/2037	
71O	S	Margaritaville/J. Buffett	4.07	00:04:06.958	00:04:05.264	8/28/1995	12/31/2037	
71O	S	Margaritaville/J. Buffett	4.07	00:04:06.958	00:04:05.264	8/28/1995	12/31/2037	
71O	S	Margaritaville/J. Buffett	4.07	00:04:06.958	00:04:05.264	8/28/1995	12/31/2037	
71P	S	Spill The Wine/E. Burdon	4.03	00:04:03.783	00:04:02.119	8/28/1995	12/31/2037	
71S	S	Caf's In Cradle/H. Chapin	3.37	00:03:37.208	00:03:35.888	8/28/1995	12/31/2037	
71S	S	Caf's In Cradle/H. Chapin	3.37	00:03:37.703	00:03:36.370	8/28/1995	12/31/2037	
71S	S	Caf's In Cradle/H. Chapin	3.37	00:03:37.208	00:03:35.888	8/28/1995	12/31/2037	
71S	S	Caf's In Cradle/H. Chapin	3.37	00:03:37.208	00:03:35.888	8/28/1995	12/31/2037	
71X	S	Old Days/Chicago	3.25	00:03:24.832	00:03:22.912	8/28/1995	12/31/2037	
71Z	S	Saturday In Park/Chicago	3.47	00:03:47.777	00:03:46.213	8/28/1995	12/31/2037	
725	S	I Got A Name/Jim Croce	3.06	00:03:05.931	00:03:04.439	8/28/1995	12/31/2037	
725	S	I Got A Name/Jim Croce	3.06	00:03:05.931	00:03:04.439	8/28/1995	12/31/2037	
725	S	I Got A Name/Jim Croce	3.06	00:03:05.512	00:03:04.024	8/28/1995	12/31/2037	
728	S	Ride Like The/Chris Cros	3.41	00:03:38.400	00:03:38.400	8/28/1995	12/31/2037	
728	S	Ride Like The/Chris Cros	3.41	00:03:38.400	00:03:38.400	8/28/1995	12/31/2037	
728	S	Ride Like The/Chris Cros	3.41	00:03:41.010	00:03:39.137	8/28/1995	12/31/2037	
728	S	Ride Like The/Chris Cros	3.41	00:03:38.400	00:03:38.400	8/28/1995	12/31/2037	
72C	S	September/Earth Wnd&Fire	3.31	00:03:31.710	00:03:29.925	8/28/1995	12/31/2037	
72C	S	September/Earth Wnd&Fire	3.31	00:03:31.232	00:03:29.456	8/28/1995	12/31/2037	
72C	S	September/Earth Wnd&Fire	3.31	00:03:31.232	00:03:29.456	8/28/1995	12/31/2037	
72C	S	September/Earth Wnd&Fire	3.31	00:03:31.232	00:03:29.456	8/28/1995	12/31/2037	
72F	S	Magnet & Steel/W. Egan	3.09	00:03:09.408	00:03:07.496	8/28/1995	12/31/2037	
72K	S	Best Of My Love/Emotons	3.34	00:03:34.616	00:03:33.173	8/28/1995	12/31/2037	
72K	S	Best Of My Love/Emotons	3.34	00:03:34.128	00:03:32.696	8/28/1995	12/31/2037	
72K	S	Best Of My Love/Emotons	3.34	00:03:34.128	00:03:32.696	8/28/1995	12/31/2037	
72K	S	Best Of My Love/Emotons	3.34	00:03:34.128	00:03:32.696	8/28/1995	12/31/2037	

6.798

<Filter is Empty>

26-Jun-07 12:18:19 PM Page 1 Of 148

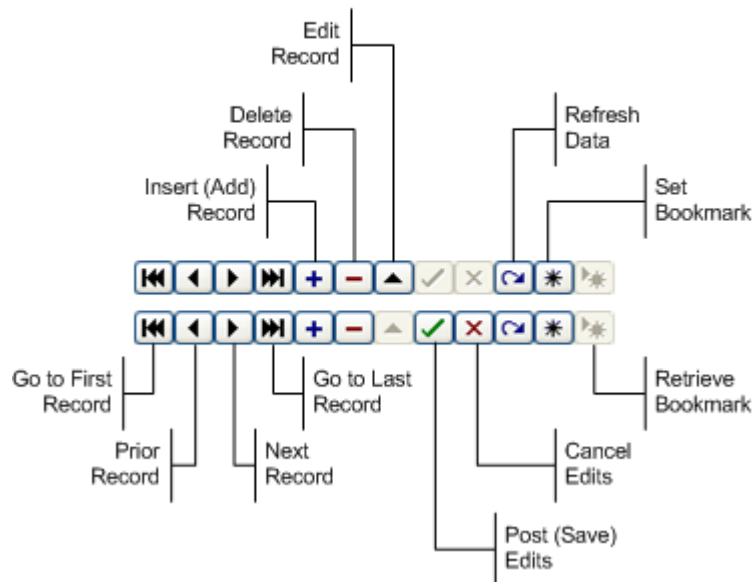
Sample Printed Report

## 5.7 Using Data Navigators

The main cart display in iDAF makes use of a so-called "data navigator". Essentially, a data navigator is an organized set of buttons that provides an easy-to-use interface for navigating around in displayed data like the list of audio files (carts).

Two example navigators are shown here - there are two because the "state" (availability) of buttons will vary depending on the current task. For instance, if you are at the beginning of a list, the navigator buttons for moving backwards through the list are disabled - at least, until you move away from the beginning of the list.

Data Navigator Button Map



In iDAF, some of the navigator buttons depicted are not visible because the functionality they provide is not used.

# Troubleshooting

**Part**



iDAF has been designed to be as trouble-free as possible and has been thoroughly tested. However, not every usage scenario can be anticipated. This section is intended as a starting point diagnosing and solving problems, but should not be viewed as an all-encompassing source of problem resolution.

If the difficulty you're experiencing is not covered here, contact the dealer who provided you with iDAF first. Alternatively, you can contact [dcsTools.com](http://dcsTools.com) - see the topic on [Technical Support](#).

## ***Application Bugs or Errors***

Bugs and errors generally fall into one of two categories - a bug, which is the application not doing something as you might have predicted it would, or; an error, which is the failure of the application to run or perform a specific task altogether.

If you find a bug, report it. Every effort is made to ensure iDAF performs as expected, but there may be circumstances that were not predicted in the development of the software. See the section on [Technical Support](#) for information on reporting a bug.

If you encounter an error, you will get an error message indicating a severe failure and iDAF may terminate. Provisions are made to "catch" such errors and log the error information to a file in the iDAF application directory. The filename is **iDAF.Eif**. Again, report any application errors you encounter. You may be asked to send the appropriate log file for analysis.

## **6.1 iDAF Seems "Slow"**

This is a broad statement, but basically means you feel like the application is not responding quickly enough in performing some tasks. Here are some typical examples, reasons and possible solutions:

1. ***Scans of files take a long time.*** Possible reasons are that you are inventorying a large number of files, you are scanning files on a network drive and have either a low-speed connection (10mbps) or high LAN traffic, or you are running an older PC lacking in CPU speed or RAM memory. One way to reduce the scan time is to scan for selected groups of files using [custom cart masks](#) to reduce results to only the audio files you wish to review rather than all files found.
2. ***When I sort or group carts, it takes a long time.*** Typically, this happens when you have a fairly large inventory - in excess of 15,000 carts, including cuts. All cart information is in-memory when sorting or grouping, so a memory-starved PC will take significantly longer to sort or group carts than a PC with plenty of available RAM memory. Processor speed also plays a role. The best solution without adding RAM to your PC is to close other unused applications, which frees up RAM memory for use by iDAF.
3. ***Saving a displayed inventory to a standard DCS/Maestro inventory data file takes a long time.*** In this case, part of the reason may be that the inventory contains a large number of multi-cut carts. When iDAF is preparing to save the inventory information, multi-cut cart AUX mark and length information is retrieved from the Next-To-Play cut, which means opening another file header to retrieve this information. If the Next-To-Play cut value has not been initialized, iDAF looks for a valid cut and retrieves that information. In extreme cases, where as much as half of the inventory is multi-cut carts, iDAF will be reading additional file information hundreds, maybe even thousands of times. This additional checking slows the process down. The two main factors in speeding up this process are your computer's processor speed and amount of RAM available.
4. ***There's a long delay when selecting a UNC path.*** If you are running iDAF on Windows 98 or Windows NT4, extremely long delays may occur when you are building a scan list and attempt to select a UNC path as one of the items. This is a known problem with no known resolution other than to consider mapping a drive letter to the UNC path.



## 6.2 Trouble with Saving Files

If you are unable to save extended inventory files - or any other files, for that matter - here are some things to check.

1. **Available Disk Space.** One reason you may have trouble saving files is a lack of free disk space on the target drive. Check to confirm you have enough space on your hard drive to accommodate the file you are trying to save. If you are saving an extended inventory file (\*.EIF), the disk space requirements are ~2400 bytes per record. An inventory list of 1,000 audio files would therefore require approximately 2.4MB in available disk space.
2. **User Rights.** In order to save files, you must have the appropriate privileges in the folder in which you wish to save the file. If you can see the folder and are sure there is enough available disk space, check with your administrator to be sure you have privileges to save files in the target folder.

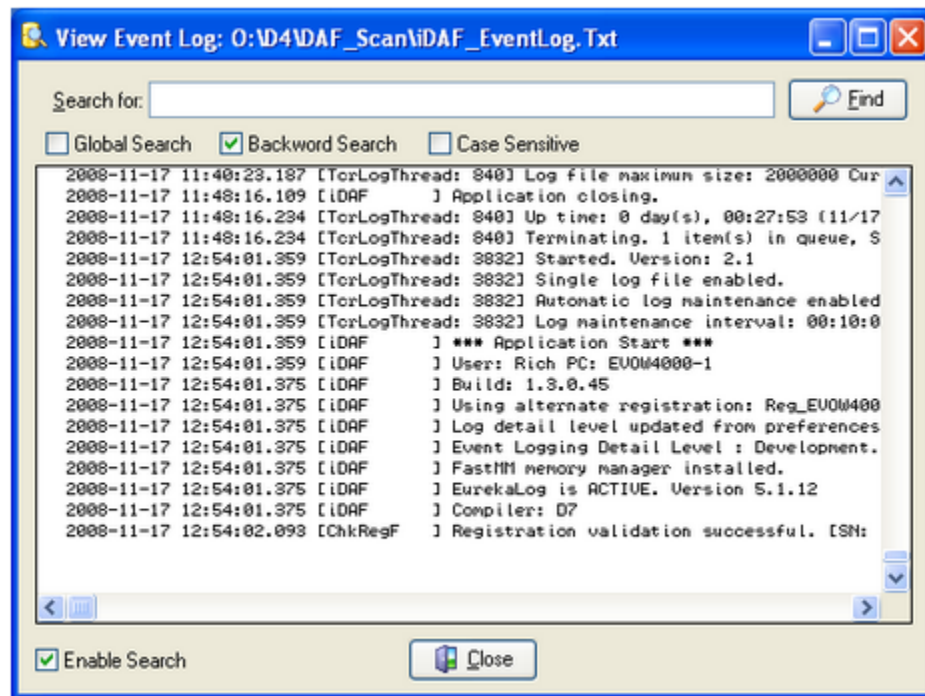
## 6.3 Extended Event Logging

You can force iDAF to increase the detail level as it "tracks" what's happening within the application. To do so, add the command-line switch **"/debug"** (no quotes) to your iDAF shortcut. For more information on command-line switches, see the topic [Command Line Switches](#).



You can temporarily enable additional application logging detail by checking the menu item **Help | Extended Event Logging**. This enables extended event logging for the current session only.

When you run iDAF, actions the program takes, along with actions you take, are recorded to a file in the iDAF application directory. You can view the file while using iDAF by selecting **Help | View Application Event Log**, or view it later using a standard text editor like NotePad. The application event logging file name is documented in the topic [List of Files](#). The application event log view is similar to the following:



Use the horizontal and vertical scroll bars to navigate the display. Standard [PgUp] and [PgDn] keystrokes work, too. You can search for specific text in this dialog by checking the "Enable Search" item, which reveals a panel for entering the text to search for, setting search direction and other options.



When viewing text, you can assign up to 10 temporary bookmarks. To assign a bookmark, use the keystroke combination [Ctrl-Shift] + 0 to 9. A small marker becomes visible in the left margin of the line. To jump to a bookmark, use the keystroke [Ctrl] + 0 to 9. Bookmarks are lost when the dialog is closed.

## 6.4 Vista, Windows 7 & Windows 8 Issues

With the introduction of Windows Vista and subsequently the releases of Windows 7 and Windows 8, Microsoft added a significant amount of additional security to these operating systems.

Generally referred to as UAC (User Account Control), the sum of these changes dramatically affect named users who might be categorized as "standard" or "general" users. Areas that previously had been quite open, allowing these users to modify, create and delete items like files and registry entries are now protected as default. Users with standard rights and privileges on these systems are now as a default prevented from making changes in such areas as the Program Files folder, the Windows folder and in the Windows registry area known as *HKEY\_LOCAL\_MACHINE*.



iDAF does not use the Windows registry during normal operations. The only information stored in the registry is created when installing iDAF and is used if you later decide to remove the software from the system.

In addition, Microsoft published numerous guidelines and usage information regarding these changes. Some of the guidelines would cause applications who require the end-user to be able to modify

preference settings, etc., to place files in several locations on the PC. While these changes do enhance the overall security of the operating system, having files and information for a specific application spread all over the system in places not intuitive or easy to find creates a significant support burden for the application vendor.

Over the years, we have chosen to try to keep all of our application's files, including those that store preferences, files containing run-time information like exception logging and activity detail, and small database files, in one location for ease in troubleshooting and housekeeping.

For these reasons, our applications are generally placed in a folder other than the Microsoft-recommended Program Files folder. As a default, these other folders historically have been "wide open" in the sense that any user could read, write and modify files.

However, depending on how tightly-secured a system is when running Vista or Windows 7, issues may arise that relate to user rights. The following points may assist you in locating problems with iDAF when running one of these operating systems and the user reporting issues does not have administrative privileges.

1. Make sure that user having trouble with iDAF has read, write, modify and delete privileges in the folder in which iDAF is installed. These privileges might be assigned to an individual user but more commonly are assigned to a user group of which the user is a member.
2. If you are placing files in a location other than the iDAF folder, ensure that the named user has read, write, modify and delete privileges in that folder location.
3. One way that some issues can be overcome is to modify any iDAF shortcuts to cause the application to be run under administrator privileges. **[Right-Click]** on the shortcut and select the menu item "Run as Administrator". A negative of this approach is that the end-user will more than likely have to enter an administrative password, which defeats the concept of administrative security as you'd have to provide the user with the password.

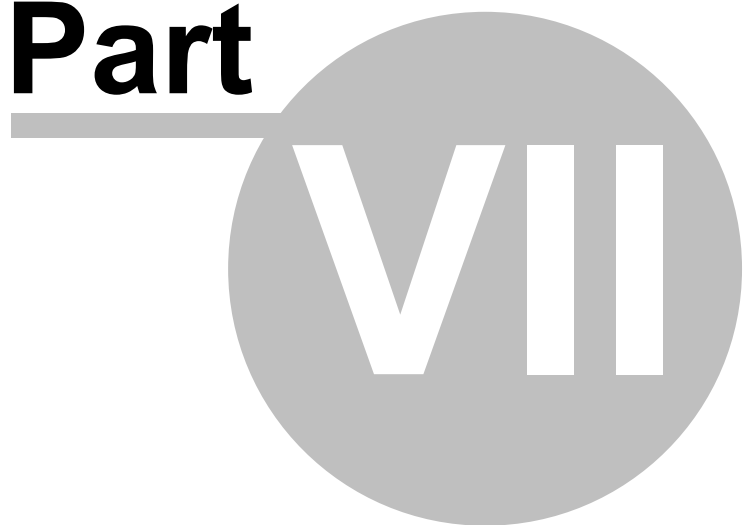
Another approach some people use is to disable UAC. While this action more or less returns user accounts to the sort of status they had in previous versions of Windows, this too defeats the idea of enhanced operating system security.



In order to extend additional privileges to a user or user group, either in the file system or registry, you need to be logged on to the operating system as an administrator.

# Contacting dcsTools

**Part**



---

If you need to contact dcsTools.com, you can do so using one of the following methods. We are here to help, so do not hesitate to communicate with us when needed.

### ***Mailing Address***

C-R Media  
8494 Saratoga Lane  
Eden Prairie, MN 55347  
USA

### ***Telephone Information***

Sales and Technical Support can be reached from 9:00 AM to 5:00 PM, U.S Central Time.

Voice: 952-949-9450

FAX: 952-949-9448

### ***Email Information***

To contact us via email, use our [on-line contact form](#). If you wish to use a standard email client, send correspondence to: [rich@c-rmedia.com](mailto:rich@c-rmedia.com).

### ***Technical Support***

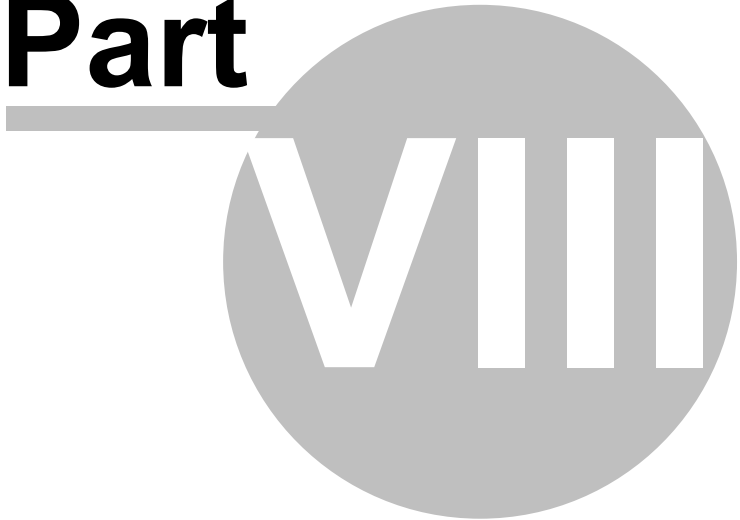
To contact technical support for our products, use the telephone numbers or email information provided above. You can also send an [on-line product-specific email](#).

### ***Web Site***

Visit our web site for information on product updates and other products we offer.

<http://www.dcsTools.com>

**Appendices**

**Part**  **VIII**

## 8.1 Registration

iDAF does not require registration for basic functionality. However, if you would like to use the advanced features of iDAF, you must purchase and register the software. If you have purchased iDAF, you should have received a registration code or instructions on how to obtain your registration code with your installation materials. The registration code contains the product serial number and is unique to each PC on which iDAF is installed.

Register iDAF by selecting **Help | Register** from the main menu. You'll be presented with a dialog similar to the following:



Enter the company name and/or call letters in the "**Licensed To**" field. Then, enter the code you were supplied with in the "**Registration Code**" field. If you received the registration code electronically, you may use standard Windows cut and paste methods to paste the code in the field. After entering the information, click on the **[Save]** button to save the information.

After you have completed registration initially, if you re-display this dialog, your registration specifics will be displayed in the Registration Information panel.

You can view your registration status at any time by selecting the menu item **Help | About**. Your serial number and expiration date will be displayed.



If you wish to change your company name and/or call letters at a later date, you will need to re-enter the registration code. Do not attempt to save the registration information without a valid registration code entered!

## 8.2 List of Files

When iDAF is installed, a number of files are placed on your computer. As iDAF is used, other files are generated.



Long file names are word-wrapped to a second line to save space. References to folder locations on your system are abbreviated, as follows:

<u>Abbreviation</u>	<u>Folder Location</u>
<b>AppDir</b>	= The application folder where iDAF was installed.

<u>File</u>	<u>Location</u>	<u>Usage</u>
iDAF.exe	<i>AppDir</i>	The iDAF main program file.
iDAF.chm	<i>AppDir</i>	The iDAF help file.
iDAF_EventLog.txt	<i>AppDir</i>	This text file is created and appended to as you use iDAF. It contains information about application activity and is generally used for determining the cause of errors and/or problems.
iDAF_ScanLog.txt	<i>AppDir</i>	This text file contains information about the file scanning process, including audio files found and the status of processing the files.
iDAF.ini	<i>AppDir</i>	Preferences file that contains user-defined preferences, including station identification and cart filters. In the Pro version, registration information is stored in this file.
DAFScanResults.EIF	<i>AppDir</i>	This file is created each time a scan of audio files is completed. It contains the results of the file scan in binary format.
iDAF_BarSettings.dat	<i>AppDir</i>	This file contains the iDAF toolbar settings.
iDAF_GridSettings.dat	<i>AppDir</i>	This file contains the iDAF cart display table settings.
*.CCF	<i>AppDir</i>	As a default, when a group of cart masks is exported from Preferences, the file has an extension of ".CCF".
*.FLDRLIST	<i>AppDir</i>	As a default, when a list of folders to be scanned is saved, the file has an extension of ".FLDRLIST".
*.FLT	<i>AppDir</i>	As a default, when a custom filter is saved to file, the file has an extension of ".FLT".
*.GSF	<i>AppDir</i>	<b>Grid Settings File.</b> As a default, when a set of grid settings is saved, the file has an extension ".GSF".
*.LST	<i>AppDir</i>	<b>Deprecated.</b> A saved list of folders to be scanned in the original file format used by iDAF. Folder lists stored in this format are handled automatically by iDAF for backward compatibility.
*.MSK	<i>AppDir</i>	<b>Deprecated and no longer used.</b> In earlier versions of iDAF, the default file extension for exported cart masks.



Some iDAF installations include additional documentation files. These files are typically PDF files and are placed in the application folder. Additional



documentation files may include an on-disk Operations Manual and Quick Start Guide.

## 8.3 Command-Line Switches

iDAF provides for the use of a minimal number of command-line switches that can be implemented as needed. These switches can be entered in any order and are not case-sensitive. To add a command-line switch, modify the iDAF shortcut. Add the switch (as documented below), separating each switch with a space.

---

**Note:** You must have a space between the end of the executable (program) name and the first command-line switch.

---

An example command-line switch would look like: **C:\dcsTools\iDAF\iDAF.exe /debug**

### ***Available Command-Line Switches***

<b><u>Switch</u></b>	<b><u>Usage</u></b>
/Debug	This command-line switch enables additional tracking of information during application execution. See the section on <a href="#">iDAF Extended Event Logging</a> for more information.

## 8.4 Revision History

This topic contains historical information on changes, enhancements and corrections to iDAF by version number and date. For the most recent changes and enhancements, see the [What's New](#) topic.

### Version 1.4.1.85 - 01/04/2012

1. **Enhancement.** Data can now be exported in XLSX (later versions of Excel). Available on host PC's running Windows XP and later only.
2. **Fix.** Restoring of iDAF's host monitor position on multi-monitor systems now works properly.
3. **Fix.** Extended Event Logging settings changed by the user at run-time are now properly saved and restored at next launch of iDAF.

### Version 1.4.0.80 - 10/10/2011

1. **Enhancement.** iDAF is now aware of multiple monitor host systems and properly saves and restores its position on the correct monitor.
2. **Enhancement.** iDAF now reports the host operating system in more detail and has been updated to include Windows 7.
3. **Enhancement.** iDAF now exports and imports cart filters in the standard dcsTools (\*.CCF) format. Cart Category (filters) files created in other dcsTools utilities can now be imported in iDAF. Any category color schemes are discarded, as they are not used in iDAF. Similarly, cart mask lists exported from iDAF will not contain custom category color information. iDAF retains the ability to import mask files (\*.MSK) created with earlier versions of iDAF.
4. **Enhancement (Pro version only).** Reports can now be saved directly as PDF files on Windows XP and later operating systems.
5. **Change.** The installation package for iDAF now includes separate builds of iDAF for legacy operating systems (prior to Windows 2000) and current operating systems. The installer automatically detects the operating system you are using and selects the correct file to install. This change was made to provide additional features and functionality for newer operating systems while still allowing the software to be used on legacy operating systems that do not support some of the new features. Notable features not available on legacy operating systems include direct export of reports to PDF files and multi-select of filter criteria when filtering data via the column drop-down lists.
6. **Fix.** On occasion, Station Names changed in Preferences were not saved properly.
7. **Fix.** When saving an inventory list as a DCS/Maestro inventory (CMINV???.DAT), extraneous characters would sometimes appear in the cart number field.
8. **Fix.** The File Path field could inadvertently include the filename.
9. **Fix (Pro version only).** The correct File Type graphic now prints, if included in a report.

### Version 1.3.3.55 - 05/27/2009

1. **Fix.** Corrected a problem with calculating the Length and Aux Mark values of large long-form PCM 44.1 stereo files.

### Version 1.3.2.52 - 04/02/2009

1. **Fix.** Audio file headers automatically updated from v1.2 to v1.4 by Maestro or associated utilities left behind partial v1.2 header information, resulting in iDAF incorrectly identifying the audio file

version as the older v1.2. iDAF now correctly handles this situation.

### Version 1.3.1.50 - 02/07/2009

1. **Fix.** iDAF would not launch on operating systems older than Windows 2000. This included Windows 98, Windows Me and Windows NT4. The problem was introduced in version 1.3.0 and has been resolved.

### Version 1.3.0.45 - 12/18/2008

1. **Enhancement.** iDAF now optionally displays .DAF file version v1.4 extended cart header information, which includes song title, artist, hook line information, intro and outro times and tag text. Menu items to display or hide all v1.4 columns has been added. Extended information is always displayed in the cart properties dialog, if available.
2. **Enhancement.** A new visual appearance setting called "Ultra Flat" has been added.
3. **Change.** A new installation program is now used that reduces the installer "footprint" and is simpler to use. When the new installation program is run and the previous iDAF installer is detected, it is uninstalled (after user confirmation), removing files that are no longer needed.
4. **Fix.** After editing a cart header, the edited cart information would appear a second time in the audio list.
5. **Fix.** iDAF no longer forces the main display to center on the desktop at startup. The display position is restored as it was when last closed.

### Version 1.2.3.40 - 03/09/2008

1. **Change.** When editing a multi-cut cart header, if the file distribution values in the master header and related cuts were out-of-sync with one another, editing of the rotation list would be disabled and other edits would be rejected because iDAF was enforcing strict matches. The rules have now been relaxed and when dealing with a cart that has missing or out-of-sync distribution, you can now edit the distribution and rotation lists successfully.



If the file distribution on **all cuts** is mismatched with the file distribution in the master header, you will be able to remove cuts from the rotation list, but not be able to add cuts as there will be no items in the available cuts list. Correcting the out-of-sync master header and cut headers can be achieved by updating the master header distribution list, which will also update all found cuts.

### Version 1.2.2.37 - 10/13/2007

1. **Enhancement.** Options to slow down .DAF file scanning and/or file copying operations have been added to provide more control over these operations, particularly when working against an older ACP server that could be overwhelmed by these operations, which are aggressive by nature. See the sections on [File Scan Settings](#) and [File Copy Options](#) for more information.
2. **Enhancement.** If a file copy operation is in-progress at program close, the file copying is now automatically terminated.
3. **Change.** Toolbar and cart display table settings have been removed from the main preferences file and are now stored in their own separate files for ease in maintenance. Existing cart display table settings are automatically converted and saved. Existing toolbar settings are removed and the toolbars are reset to application defaults. See the [List of Files](#) topic for the specific file names used for toolbars and cart display table settings.

**Version 1.2.0.35 - 06/27/2007**

1. **Enhancement.** iDAF now provides the means to reduce scan time and the resulting list of carts (audio files) by allowing user-defined "[Custom Cart Masks](#)" as a scanning option. In this case, the user defines a list of file masks for audio files that are to be included in the final result. Unless enabled, scans default to all carts (audio files) found in the selected folders.
2. **Enhancement.** The last folder used for opening a single .DAF file is now preserved and used as the default folder the next time a single file is opened.
3. **Enhancement.** The [Ctrl-X] keyboard shortcut has been implemented for program exit. See the topic on [Keyboard Shortcuts](#) for additional information.
4. **Fix.** An error, "RecordIndex out of bounds", would occur if a user deleted a number of audio files and was working with a grouped record display. The error occurred only under certain conditions - not all deletions in a grouped record display triggered the error.
5. **Change.** The help documentation has been updated to work with Windows Vista. Vista does not as a default support the traditional help file (\*.HLP). The help documentation is now supplied as a compiled HTML file (\*.CHM).



[Microsoft Security Update 896358](#) not only fixes a vulnerability in HTML Help, it prevents HTML Help files from execution if the CHM file is installed on a network drive. CHM files installed locally continue to work.

**Symptoms:** When you open a CHM file from a UNC path or from a network drive even if the network drive is mapped to a drive letter, the HTML Help viewer opens and instead of displaying the topic, it displays an error message "Action canceled" in the topic pane.

**Solutions:** Install the application on a local drive to avoid this problem. Alternatively, there are some registry changes that can be made manually to re-enable using CHM help files from a network drive. A free [HTML Help Registration Utility](#) is available at the EC Software web site.

**Version 1.1.5.31 - 12/12/2006**

1. **Fix.** Visual appearance inconsistencies, particularly in the cart properties edit dialog, have been corrected.

**Version 1.1.4.29 - 06/10/2006**

1. **Fix.** A problem with problem with CMINV???.DAT files' LogLen field not displaying properly has been fixed. The DAF file header allows for 7 characters for the log length field, but the CMINV???.DAT log length field is limited to 5 characters. When saving an extended inventory file as a CMINV???.DAT file, iDAF now writes only the last 5 characters of the log length field to the CMINV???.DAT log length field.

**Version 1.1.3.28 - 03/30/2006**

1. **Enhancement.** Bit rate information is now displayed on the view/edit cart header dialog.
2. **Enhancement.** The time it takes to display the view/edit cart header dialog has been reduced significantly.
3. **Fix.** A one-time memory leak at program exit has been corrected.

**Version 1.1.2.25 - 11/15/2005**

1. **Enhancement.** Functionality to view and/or edit a single .DAF file directly from disk has been added. You can now select a single .DAF file from a standard file dialog and view the header information. Pro version users can also edit the header information, with some limitations when working with multi-cut carts.
2. **Fix.** Memory leaks in the file scan modules have been corrected. These did not generally affect users of iDAF, as the leaks were small and the user would have to run several hundred scans without leaving the program before an error would occur.

**Version 1.1.0.22 - 08/01/2005**

1. **Enhancement.** A "View" menu item has been added to the main menu. You can now set the visual appearance, change the visibility of selected toolbars, and reset all toolbars to their default settings from the main menu.
2. **Enhancement.** Registered users can now print reports based on the cart information displayed. The layout of a report can be modified in the Preview mode, including changes to paper orientation, report title, elements that will be visible (printed), paper margins, and a number of other settings. Customized report layouts can be saved to a user-defined file name and later re-used by loading the custom settings.

**Version 1.1.0.20 - 06/14/2005**

1. **Enhancement.** Registered users can now edit the Owner Node of a selected cart. (Pro Version feature)
2. **Enhancement.** Registered users can now delete audio files, either singly or in groups. (Pro Version feature)
3. **Enhancement.** The displayed list of carts now has visual indicators for the type of cart - or, if the cart has been deleted, a special indicator is displayed.
4. **Enhancement.** The cart edit dialog now displays a checkbox indicating whether or not the audio file being edited is a stereo file.
5. **Change.** If a version 1.2 audio file is updated to use more than 16 work stations in distribution, the audio file version text is automatically updated to version 1.3. Similarly, if the file being edited originally was a version 1.3 file and the distribution list is just the standard 16 work stations, the audio file version text is reverted to version 1.2.
6. **Change.** When an audio file is edited and committed, the revision number of the file is now incremented. This includes cuts of a multi-cut cart when the distribution or rotations are changed.

**Version 1.0.2.19 - 05/29/2005**

1. **Enhancement.** During a file scan, an animation is displayed in the scan toolbar, indicating that a scan is in progress. The application title also is updated to indicate a scan is in progress.
2. **Enhancement.** A button has been added to the filters toolbar to directly launch a custom filter dialog. With this dialog, users can create their own customized list filters, as well as save and restore custom filters.
3. **Enhancement.** Performance when working with large inventories has been improved, particularly when saving an EIF (Extended Inventory File) file.
4. **Enhancement.** When viewing an event log, settings for searching the log are saved when the dialog is closed and restored when it is opened.

5. **Enhancement.** Users can now save a displayed inventory as a standard DCS/Maestro inventory file (CMINV???.DAT) on-demand. The option is available in the [File] menu on the main display.
6. **Change.** A DCS/Maestro inventory file is no longer automatically created when scan disk surfaces as a default behavior. Users can enable automatic saving of this type of file in Preferences.

**Version 1.0.1.18 - 01/04/2005**

1. The initial public release of iDAF.

# Index

## - A -

### Appendices

- Command-Line Switches 74
- List of Files Created or Used by iDAF 72
- Registration 71

## - C -

### Cart Masks

- Explained 51

### Carts

- Copying 33
- Deleting 35
- Editing 34

### Changes 8

### Command-Line Switches 74

### Configuration

- Cart Filters 18
- General 17
- Overview 17

### Contacting dcsTools.com

- Mailing Address 69
- Sales 69
- Tech Support 69
- Web Site 69

### Copying Carts 33

### Copyrights 6

### Corrections 8

### Customizing iDAF

- Appearance 52
- Data Columns 52
- Filtering Data 54
- Grouping Data 58
- Position 52
- Size 52

### Customizing the Display 52

## - D -

### Data

- Exporting 31

### Data Navigator 62

### dcsTools.com

- Address 69
- Email Address 69
- Telephone Numbers 69

### dcsTools.com, Contacting 69

### Debug Mode, Setting 65

### Deleting Carts 35

### Display, Working with the 28

## - E -

### Editing Carts 34

### EIF

- Opening 30

- Saving 30

### Exporting Data 31

## - F -

### Features 7

### Files, Created or Used by iDAF 72

### Filtering Data 54

## - G -

### Grouping Data 58

## - I -

### iDAF, Starting 23

### Installing 14

### Interface, Main 28

### Introduction

- Changes in iDAF 8

- Corrections 8

- Features 7

- What's New 8

## - K -

### Keyboard Shortcuts 60

## - L -

### Launching iDAF 23

### License Agreement 10



List of Files 72

## - M -

Main Display 28

## - N -

Navigator, Data 62

## - O -

Open an EIF 30

Overview

Pro Version 6

Program Intent 6

## - P -

Page Setup, Reports 39

Preferences

Cart Filters 18

General 17

Overview 17

Print Preview 38

Printed Report Sample 61

Printed Reports 36

Printing Design, Reports 43

Pro Version 71

## - R -

Reference

Cart Masks 51

Customizing the Display 52

Data Navigators 62

Filtering Data 54

Grouping Data 58

Keyboard Shortcuts 60

Overview 51

Printed Report Sample 61

Registration 71

Removing 14

Report Page Setup 39

Report Printing Design 43

Report Settings, Saving 49

Reports, Printed

Overview 36

Page Setup 39

Preview 38

Printing Design 43

Saving Report Settings 49

Requirements, System 14

## - S -

Sample, Printed Report 61

Saving File Lists 30

Saving Report Settings 49

Scan

Starting 23

Stopping 27

Working with Results 28

Scan for Files 23

Setting Debug Mode 65

Shortcuts, Keyboard 60

Slow Operation 64

Starting iDAF 23

Station Names 17

Stations 17

Stopping a Scan 27

Switches, Command-Line 74

System Requirements 14

## - T -

Troubleshooting

Slow Operation 64

Trademarks

apt-X 6

DCS 6

Maestro 6

Windows 6

Troubleshooting

Debug Mode 65

Overview 64

Saving Files 65

Vista 66

Windows 7 66

## - U -

Uninstalling 14

Upgrade Instructions 14  
Upgrading 14  
Use 64 Stations 17  
Using iDAF 23

## **- V -**

View Customization 52  
Vista 66

## **- W -**

Warranty 10  
Welcome 6  
What's New 8  
Wildcards 18  
Windows 7 66  
Windows Vista 66

Copyright © 2004-2016 C-R Media All Rights Reserved