

XPlay

© Copyright 2002-2021 C-R Media, KTC Technologies Ltd
All Rights Reserved.

XPlay

© Copyright 2002-2021 C-R Media, KTC Technologies Ltd All

Rights Reserved.

All rights reserved. No parts of this work may be reproduced in any form or by any means - graphic, electronic, or mechanical, including photocopying, recording, taping, or information storage and retrieval systems - without the written permission of the publisher.

Products that are referred to in this document may be either trademarks and/or registered trademarks of the respective owners. The publisher and the author make no claim to these trademarks.

While every precaution has been taken in the preparation of this document, the publisher and the author assume no responsibility for errors or omissions, or for damages resulting from the use of information contained in this document or from the use of programs and source code that may accompany it. In no event shall the publisher and the author be liable for any loss of profit or any other commercial damage caused or alleged to have been caused directly or indirectly by this document.

Publisher

Rich Habedank

Special thanks to:

All those who have offered insights and suggestions for enhancement of this product.

Printed

*June 2021 in Eden Prairie, MN
USA*

Table of Contents

Part I Welcome	4
Part II Features	6
Part III What's New in XPlay	8
Part IV Warranty & License Agreement	10
Part V Installation & System Requirements	14
1 System Requirements.....	15
2 Installing, Updating or Removing XPlay.....	16
Part VI Configuring XPlay	18
1 General Settings.....	19
2 Audio Distribution Settings.....	20
Part VII Using XPlay	21
Part VIII Contacting dcsTools.com	26
Part IX Appendices	28
1 Registration.....	29
2 List of Files	32
Index	33

Welcome

Part



XPlay is a unique audio player designed specifically for use with .DAF audio files created for XStudio and Wide Orbit's (originally Computer Concepts) DCS™ and Maestro™ audio systems. Standard features include real-time playback of MPEG-II and linear .DAF files, with apt-X™ file playback available as an option. XPlay runs on a standard Windows PC equipped with a standard sound card, making playback of DCS & Maestro-created audio available on any desktop that has access to the audio files. Typically, access is gained through the ACP server audio volume, but could also be made directly to a shared volume on a host Maestro unit. A simple user interface allows rapid selection of an audio cut for play, and multi cut carts are organized and displayed with true start and stop dates for each cut.

XPlay is an ideal solution for auditioning commercials for advertisers, checking content in the production department, and auditioning music in the programming department.

XPlay can be used with no dependencies on the host XStudio, DCS or Maestro system, other than access to audio files created by the system. This means that audio files could be placed on a laptop and subsequently played back on-site at an advertiser location, as an example.

Copyrights and Trademarks

Copyrights

Copyright © 2002-2021 dcsTools.com, C-R Media, KTC Technology, Ltd. All rights reserved

Portions copyright © Microsoft Corporation. All rights reserved.

Information in this document is subject to change without notice. The software described in this document is furnished under a license agreement or nondisclosure agreement. The software may be used or copied only in accordance with the terms of those agreements. No part of this publication may be reproduced, stored in a retrieval system, or transmitted in any form or any means electronic or mechanical, including photocopying and recording for any purpose other than the purchaser's personal use without the written permission of C-R Media.

C-R Media
8494 Saratoga Lane
Eden Prairie, MN 55347
USA

Trademarks

apt-X® is a registered trademark of APT – Applied Processing Technology, Belfast

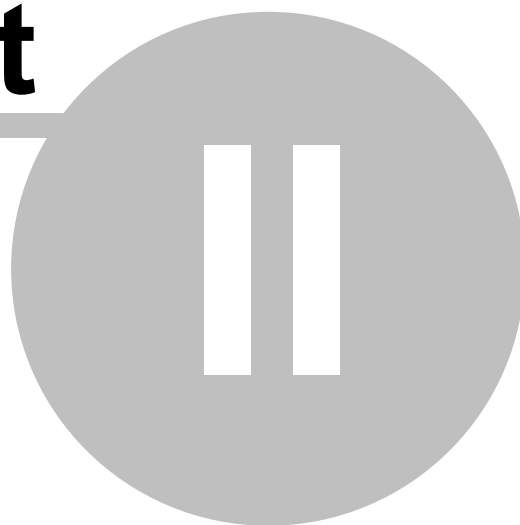
DCS™ and Maestro™ are trademarks of WideOrbit, Inc., San Francisco, CA (formerly Computer Concepts Corporation, Lenexa, KS, dMarc Broadcasting, Newport Beach, CA and Google, Inc., Mountain View, CA)

Windows 95®, Windows 98®, Windows Me®, Windows NT®, Windows 2000®, Windows XP®, Windows Server 2003®, Windows Vista®, Windows Server 2008®, Windows 7®, Windows 8®, Windows 8.1®, Windows Server 2012®, Windows Server 2012R2®, Windows Server 2016®, Windows Server 2019®, and Windows 10® are registered trademarks of Microsoft Corporation.

Other brands and their products are trademarks or registered trademarks of their respective holders and should be noted as such.

Features

Part

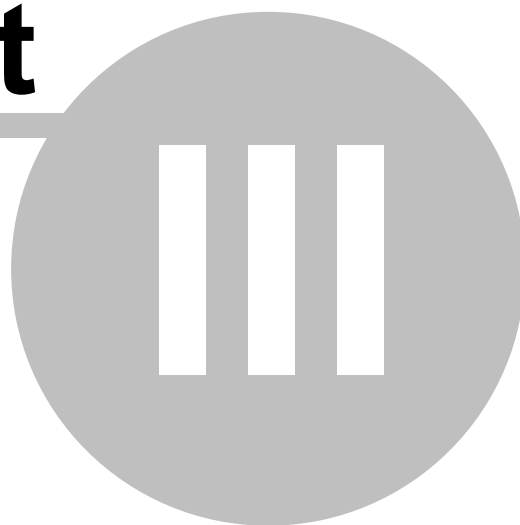


XPlay is a unique audio player designed specifically for playing .DAF audio files. Here are a few of the key features:

- Play PCM, MPEG, and/or apt-X™ XStudio, DCS or Maestro files from a standard desktop PC.
- Play just the intro, the end or skip around in the audio on-demand.
- Full cart information is displayed, including multi-cut cart details.
- Can build its own inventory list or use an existing XStudio, DCS or Maestro inventory data file (CMINVxx.DAT) for fast start-up with large amounts of audio.
- Simple, intuitive user interface.
- Ideal for auditioning audio to customers.
- No dependencies – users do not need to interact with the host system (either DCS or Maestro). All that's needed is access to the audio files created by the host system.

What's New in XPlay

Part



This section documents changes and enhancements to XPlay by version number.

NOTE:

XPlay is a legacy application that uses the original Windows Help file (.hlp). Windows 10 does not support this help format and if you select Help from the application, it will not launch. As a workaround, a Windows HTML Help file (XPlay.chm) is included in the installation and a Windows menu item is created for it. Additionally, the manual is installed as a PDF document.

Version 1.2.2.77 – 11/05/2008

1. **Fix.** If an audio item had regional distribution settings set to distribute carts to all regions (all on), XPlay would misinterpret the file as an MPEG file.
2. **Fix.** Fast forward and rewind buttons now work as expected when playing back MPEG files.
3. **Fix.** If a cart was flagged as a multi-cut cart and had no available cuts, XPlay would display an error when trying to access the cuts list.

Version 1.2.2.75 – 02/01/2006

1. Support for playback of CCC v1.4 .DAF files has been added.
2. A problem where the application would occasionally AV on exit has been corrected.

Version 1.2.2.73 – 12/15/2003

1. Support for playback of 44.1 and 48 kHz PCM (linear files) has been added.
2. A bug where the displayed file type (PCM, MPEG, apt-X) was incorrect when using the Intro and Outro buttons has been corrected.

Version 1.2.2.70 – 02/28/2003

1. The ability to play back apt-X™ encoded audio files has been added. This feature requires the optional apt-X Encoder software module.
2. XPlay will now build its own inventory information or can use an inventory data file created by a DCS or Maestro unit. Using an inventory data file improves the application start-up time since XPlay does not have to locate and catalogue every audio file on the audio drive.
3. The inventory display has been revised and now includes all available cart information – description, agency tape information, start and end dates. The inventory list can be sorted by column and features a type-ahead search.
4. XPlay registration now requires a machine ID as a part of the process. Users of previous versions will need to have their registration re-issued.

Warranty & License Agreement

Part



IV

PLEASE READ THIS DOCUMENT CAREFULLY. BY INSTALLING AND USING THE SOFTWARE, YOU ARE AGREEING TO BECOME BOUND BY THE TERMS OF THIS AGREEMENT. IF YOU DO NOT AGREE TO THE TERMS OF THE AGREEMENT, PLEASE DO NOT INSTALL OR USE THE SOFTWARE.

This is a legal agreement between you and KTC Technology Ltd. This Agreement states the terms and conditions upon which KTC Technology Ltd. offers to license the software. Whether contained in the disk package or having been pre-loaded by KTC Technology Ltd. on the machine's hard drive, together with all related documentation and accompanying items including, but not limited to, the executable programs, drivers, libraries and data files associated with such programs (collectively, the "Software").

LICENSE

Grant of License. The Software is licensed, not sold, to you for use only under the terms of this Agreement. You own the disk or other media on which the Software is originally or subsequently recorded or fixed; but, as between you and KTC Technology Ltd. (and, to the extent applicable, its licensors), KTC Technology Ltd. retains all title to and ownership of the Software and reserves all rights not expressly granted to you.

For Use on a Single Computer. You may use the Software only on a single computer by a single user at any one time. You may transfer the machine-readable portion of the Software from one computer to another computer, provided that

- (a) the Software (including any portion or copy thereof) is erased from the first computer, and
- (b) there is no possibility that the Software will be used on more than one computer at a time.

Stand-alone Basis. You may use the Software only on a stand-alone basis, such that the Software and the functions it provides are accessible only to persons who are physically present at the location of the computer on which the Software is loaded. You may not allow the Software or its functions to be accessed remotely, or transmit all or any portion of the Software through any network or communication line.

One Archival Copy. You may make one (1) archival copy of the machine-readable portion of the Software for backup purposes only in support of your use of the Software on a single computer, provided that you reproduce on the copy all copyright and other proprietary rights notices included on the originals of the Software.

No Merger or Integration. You may not merge any portion of the Software into, or integrate any portion of the Software with, any other program, except to the extent expressly permitted by the laws of the jurisdiction where you are located. Any portion of the Software merged into or integrated with another program, if any, will continue to be subject to the terms and conditions of this Agreement, and you must reproduce on the merged or integrated portion all copyright and other proprietary rights notices included on the originals of the Software.

Network Version. If you have purchased a "network" version of the Software, this Agreement applies to the installation of the Software on a single "file server". It may not be copied onto multiple systems. Each "node" connected to the "file server" must also have its own license of a "node copy" of the Software, which becomes a license only for that specific "node".

Transfer of License. You may transfer your license of the Software, provided that

- (a) you transfer all portions of the Software or copies thereof,
- (b) you do not retain any portion of the Software or any copy thereof, and,
- (c) the transferee reads and agrees to be bound by the terms and conditions of this Agreement.

Limitations on Using, Copying, and modifying the Software. Except to the extent expressly permitted by this Agreement or by the laws of the jurisdiction where you acquired the Software, you may not use, copy or modify the Software. Nor may you sub-license any of your rights under this Agreement.

Decompiling, Disassembling, or Reverse Engineering. You acknowledge that the Software contains trade secrets and other proprietary information of KTC Technology Ltd. and its licensors. Except to the extent expressly permitted by this Agreement or by the laws of the jurisdiction where you are located, you may not decompile, disassemble or otherwise reverse engineer the Software, or engage in any other activities to obtain underlying information that is not visible to the user in connection with normal use of the Software. In any event, you will notify KTC Technology Ltd. of any information derived from reverse engineering or such other activities, and the results thereof will constitute the confidential information of KTC Technology Ltd. that may be used only in connection with the Software.

TERMINATION

The license granted to you is effective until terminated. You may terminate it at any time by returning the Software (including any portions or copies thereof) to KTC Technology Ltd. The license will also terminate automatically without any notice from KTC Technology Ltd. if you fail to comply with any term or condition of this Agreement. You agree upon such termination to return the Software (including any portions or copies thereof) to KTC Technology Ltd. Upon termination, KTC Technology Ltd. may also enforce any rights provided by law. The provisions of this Agreement that protect the proprietary rights of KTC Technology Ltd. will continue in force after termination.

LIMITED WARRANTY

KTC Technology Ltd. warrants, as the sole warranty that the disks on which the Software is furnished will be free of defects, as set forth in the Warranty Card or printed manual included with the Software. No distributor, dealer or any other entity or person is authorized to expand or alter this warranty or any other provisions of this Agreement. Any representation, other than the warranties set forth in this Agreement, will not bind KTC Technology Ltd.

KTC Technology Ltd. does not warrant that the functions contained in the Software will meet your requirements or that the

operation of the Software will be uninterrupted or error-free. EXCEPT AS STATED ABOVE IN THIS AGREEMENT, THE SOFTWARE IS PROVIDED AS-IS WITHOUT WARRANTY OF ANY KIND, EITHER EXPRESS OR IMPLIED, INCLUDING, BUT NOT LIMITED TO, ANY IMPLIED WARRANTIES OF MERCHANTABILITY AND FITNESS FOR A PARTICULAR PURPOSE.

You assume full responsibility for the selection of the Software to achieve your intended results, and for the installation, use and results obtained from the Software. You also assume the entire risk as it applies to the quality and performance of the Software. Should the Software prove defective, you (and not KTC Technology Ltd., or its distributors or dealers) assume the entire cost of all necessary servicing, repair or correction.

This warranty gives you specific legal rights, and you may also have other rights, which vary from country/state to country/state. Some countries/states do not allow the exclusion of implied warranties, so the above exclusion may not apply to you. KTC Technology Ltd. disclaims all warranties of any kind if the Software was customized, repackaged or altered in any way by any third party other than KTC Technology Ltd.

LIMITATION OF REMEDIES AND DAMAGES

THE ONLY REMEDY FOR BREACH OF WARRANTY WILL BE THAT SET FORTH IN THE WARRANTY CARD OR PRINTED MANUAL INCLUDED WITH THE SOFTWARE. IN NO EVENT WILL KTC TECHNOLOGY LTD. OR ITS LICENSORS BE LIABLE FOR ANY INDIRECT, INCIDENTAL, SPECIAL OR CONSEQUENTIAL DAMAGES OR FOR ANY LOST PROFITS, LOST SAVINGS, LOST REVENUES OR LOST DATA ARISING FROM OR RELATING TO THE SOFTWARE OR THIS AGREEMENT, EVEN IF KTC Technology Ltd. OR ITS LICENSORS HAVE BEEN ADVISED OF THE POSSIBILITY OF SUCH DAMAGES. IN NO EVENT WILL KTC Technology Ltd.'s LIABILITY OR DAMAGES TO YOU OR ANY OTHER PERSON EVER EXCEED THE AMOUNT PAID BY YOU TO USE THE SOFTWARE, REGARDLESS OF THE FORM OF THE CLAIM.

Some countries/states do not allow the limitation or exclusion of liability for incidental or consequential damages, so the above limitation or exclusion may not apply to you.

PRODUCT RETURNS

IF YOU MUST SHIP THE SOFTWARE TO KTC Technology Ltd. OR AN AUTHORIZED KTC Technology Ltd. DISTRIBUTOR OR DEALER, YOU MUST PREPAY SHIPPING AND EITHER INSURE THE SOFTWARE OR ASSUME ALL RISK OF LOSS OR DAMAGE IN TRANSIT.

U.S. GOVERNMENT RESTRICTED RIGHTS

All Software and related documentation are provided with restricted rights. Use, duplication or disclosure by the U.S. Government is subject to restrictions as set forth in subdivision (b)(3)(ii) of the Rights in Technical Data and Computer Software Clause at 252.227-7013. If you are sub-licensing or using the Software outside of the United States, you will comply with the applicable local laws of your country, U.S. export control law, and the English version of this Agreement.

CONTRACTOR/MANUFACTURER

The Contractor/Manufacturer for the Software is:

KTC Technology Ltd.
68 Woodstock Drive
Sherwood Park, Alberta, Canada T8A 4C3

GENERAL

This Agreement is binding on you as well as your employees, employers, contractors and agents, and on any successors and assignees. Neither the Software nor any information derived therefrom may be exported except in accordance with the laws of Canada or other applicable provisions. The laws of the Province of Alberta govern this Agreement (except to the extent federal law governs copyrights and federally registered trademarks). This Agreement is the entire agreement between us and supersedes any other understandings or agreements, including, but not limited to, advertising, with respect to the Software.

If any provision of this Agreement is deemed invalid or unenforceable by any country or government agency having jurisdiction, that particular provision will be deemed modified to the extent necessary to make the provision valid and enforceable, and the remaining provisions will remain in full force and effect.

For questions concerning this Agreement, please contact KTC Technology Ltd. at the address stated above. For questions on product or technical matters, contact the KTC Technology Ltd. technical support center nearest you.

SPECIAL PROVISIONS APPLICABLE TO THE EUROPEAN UNION

If you acquired the Software in the European Union (EU), the following provisions also apply to you. If there is any inconsistency between the terms of the Software License Agreement set out above and the following provisions, the following provisions shall take precedence:

Decompilation.

You agree not for any purpose to transmit the Software or display the Software's object code on any computer screen or to make any hard copy memory dumps of the Software's object code. If you believe you require information related to the inter operability of the Software with other programs, you shall not decompile or disassemble the Software to obtain such information, and you agree to request such information from KTC Technology Ltd. at the address listed below. Upon receiving such a request, KTC Technology Ltd. shall determine whether you require such information for a legitimate purpose and, if so,

KTC Technology Ltd. will provide such information to you within a reasonable time and on reasonable conditions.

Limited Warranty.

EXCEPT AS STATED ABOVE IN THIS AGREEMENT, AND AS PROVIDED BELOW UNDER THE HEADING "STATUTORY RIGHTS", THE SOFTWARE IS PROVIDED AS-IS WITHOUT WARRANTY OF ANY KIND, EITHER EXPRESS OR IMPLIED, INCLUDING, BUT NOT LIMITED TO, ANY IMPLIED WARRANTIES OR CONDITIONS OF MERCHANTABILITY, QUALITY AND FITNESS FOR A PARTICULAR PURPOSE.

Limitation of Remedy and Damages.

THE LIMITATIONS OF REMEDIES AND DAMAGES IN THE SOFTWARE LICENSE AGREEMENT SHALL NOT APPLY TO PERSONAL INJURY (INCLUDING DEATH) TO ANY PERSON CAUSED BY KTC Technology Ltd.'s NEGLIGENCE AND ARE SUBJECT TO THE PROVISION SET OUT BELOW UNDER THE HEADING "STATUTORY RIGHTS".

Statutory rights.

Irish law provides that certain conditions and warranties may be implied in contracts for the sale of goods and in contracts for the supply of services. Such conditions and warranties are hereby excluded, to the extent such exclusion, in the context of this transaction, is lawful under Irish law. Conversely, such conditions and warranties, insofar as they may not be lawfully excluded, shall apply. Accordingly nothing in this Agreement shall prejudice any rights that you may enjoy by virtue of Sections 12, 13, 14 or 15 of the Irish Sale of Goods Act 1893 (as amended).

General: the laws of the Republic of Ireland govern This Agreement.

The local language version of this agreement shall apply to Software acquired in the EU. This Agreement is the entire agreement between us and you agree that KTC Technology Ltd. will not have any liability for any untrue statement or representation made by it, its agents or anyone else (whether innocently or negligently) upon which you relied upon entering this Agreement, unless such untrue statement or representation was made fraudulently.

Installation & System Requirements

Part



V

In order to use XPlay successfully, certain hardware and Windows operating system requirements must be met. You must also install the XPlay software on the PC, using an installation program.

This section documents the system requirements for XPlay and covers the process of installing, updating and removing the XPlay software.

5.1 System Requirements

XPlay requires a PC that supports Microsoft Windows™ XP Pro, Vista or later operating system along with the following:

- 128 MB RAM (Windows XP), 1GB RAM (Vista and later)
- At least 6 MB free disk space for this application only.
- An audio card supported by the operating system with WDM drivers.
- Compatible VGA, super VGA, XGA or 8514/A monitor, with adapter, running 800x600 minimum display resolution
- Microsoft mouse or compatible pointing device.
- A LAN card (NIC), known to be working (if you will be connecting to a LAN to access audio files).

5.2 Installing, Updating or Removing XPlay

The XPlay installation program provides step-by-step instructions on every screen displayed during the installation. Follow the instructions on each screen to install XPlay.

Before you install

1. Close all other programs, including any anti-virus programs.
2. Log on to your computer with administrator privileges.



You must have administrator privileges to perform an installation or a software update.

Installing XPlay

XPlay is distributed as a downloadable installation program. The latest version of the software is always available on our [web site](#) on the XPlay product home page and the general downloads page.

1. After you have downloaded the installation program to your computer, locate the setup program, **XPlaySetup.exe**, in the folder to which you downloaded the file. [Double-click] on the setup program to begin installation.
2. Follow the instructions on each screen to install the software.

Updating XPlay

1. If you have downloaded or otherwise received a revision for XPlay, the process for updating the software is virtually identical to the initial installation. However, the installation dialogs may be a bit different. When updating, you are not typically given an opportunity to select the target folder for installation, as that choice has already been made in a previous installation.
2. You may be prompted that an old version of XPlay has been found and that it must be uninstalled (removed) before continuing with the update. If you see this prompt when updating XPlay, you should answer "Yes" to remove the old version, and if prompted to confirm the removal of the old version, again answer "Yes".
3. On occasion, updating XPlay may require some additional tasks be performed during the update. Such tasks might include validating and/or updating your registration and making adjustments to your preferences settings. If these tasks are needed, you will be prompted for any input required and notified if the update task could not be completed successfully.



You must have administrator privileges to perform an update.

To Uninstall XPlay

To remove XPlay from your PC, select the Control Panel applet Add/Remove Programs. Select XPlay and click on the [Remove] or [Uninstall] button. Follow the prompts to uninstall the software.



Only files originally installed are removed. Event log files and your preferences files are not removed. See the topic on [application-created files](#) for more information on files that are installed or created by XPlay.

Notes for Novell Netware Users

1. Audio files can be located on all versions of a Novell Netware server. The logged-on user must have the appropriate user rights for the volumes and folders used.
2. The latest Microsoft operating systems, starting with Vista, **do not include a Netware client**. This means that you cannot directly access a Novell Netware server with a PC running these operating systems. A possible workaround is to implement usage of Microsoft's Gateway Services for Netware, available on Windows 2000 Server. However, using Gateway Services for Netware may negatively affect performance.

Configuring XPlay

Part



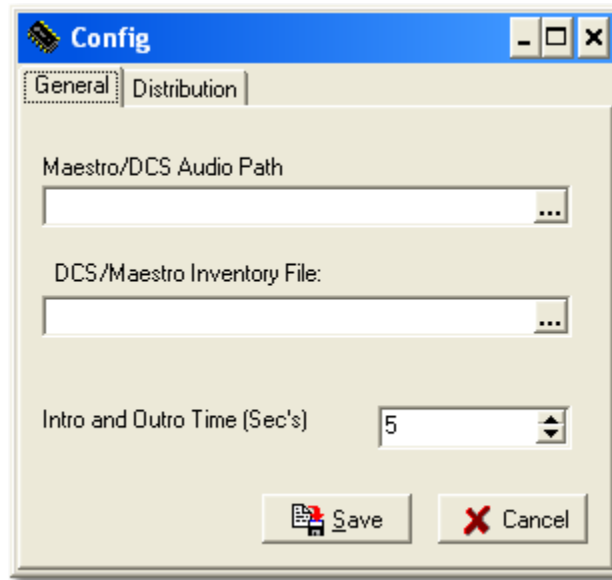
VI

Before you begin using XPlay, you need to set up the program so it knows where to find source audio files that will be played, among other things. To set up XPlay, select the main menu item **Edit | Preferences**. A dialog will be displayed, containing a number of tabs and sections.

This section provides details on each of the available preference settings, organized as they are displayed.

6.1 General Settings

When the XPlay preferences dialog is first opened, the **General** settings tab is displayed.

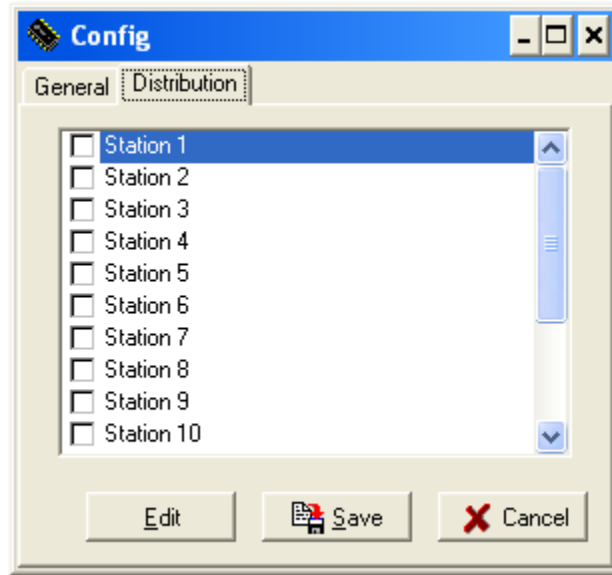


There are a minimal number of properties that need to be set. Items with a check mark in the **REQ** column require user entry, while unchecked items have default values which can optionally be changed.

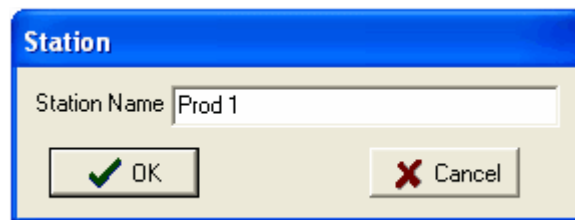
<u>Property</u>	<u>REQ</u>	<u>Description</u>
Audio Path	✓	This is the physical location of audio files that will be played. The location could point to an ACP server audio volume, a shared volume on an XStudio or Maestro unit, or a folder location of your choosing that contains audio files created for XStudio, Maestro or DCS.
Inventory File		The fully-qualified path and filename of an XStudio, DCS or Maestro inventory file. Use this field if you want XPlay to initially load the cart list quickly rather than scanning the entire audio path. The default value is <blank> , meaning XPlay will scan the Audio Path and build a list of available carts on its own.
Intro & Outro Time		The value, in seconds, used to play the first part or the last part of the audio. The default is 5 seconds.

6.2 Audio Distribution Settings

Optionally, you can identify the work stations in your host XStudio, DCS or Maestro system. This information is used only for displaying the “owner” of a given cart (audio item).



To change a station name, select the station you wish to change by clicking on the item. Then click on the **[Edit]** button. A simple dialog appears, allowing you to enter the text of your choosing:



When entry of the new name is complete, click on the **[Ok]** button.

Using XPlay

Part



VII

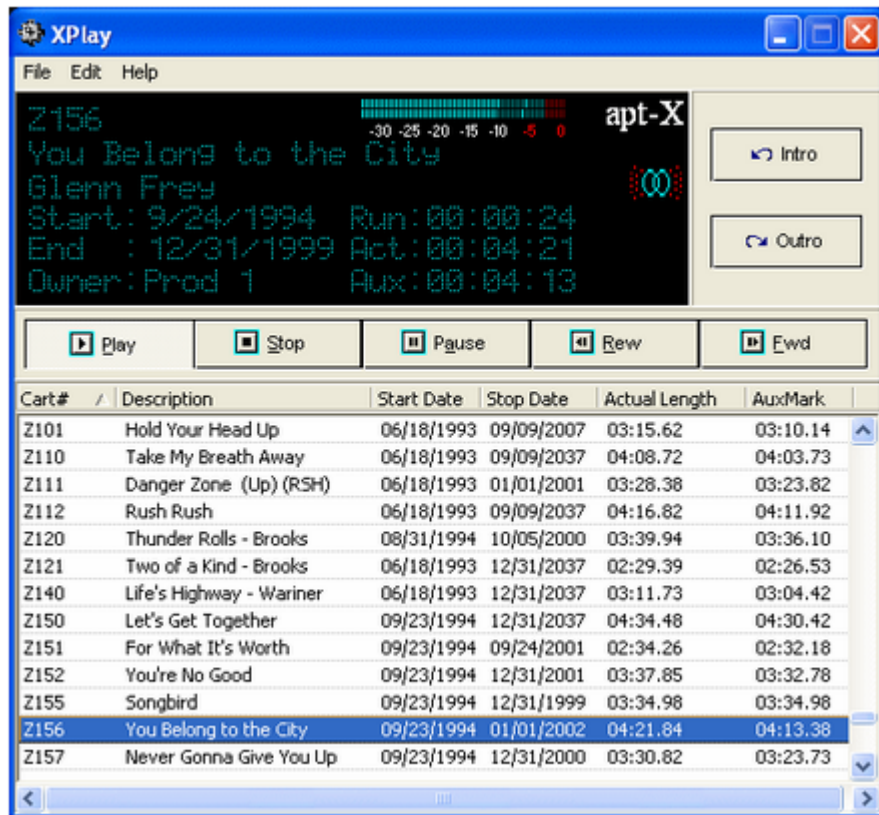
Using XPlay is simple – just launch the application from your **Start Menu**. Normally, XPlay is located at **Start | Programs | XPlay**. When XPlay starts up, it will either load an XStudio/DCS/Maestro inventory file (and be ready for use immediately) or it will scan the audio path defined in [Preferences](#) and build its audio list manually. If XPlay is scanning the audio path folder to build the list of available carts, there will be some delay in start-up, determined by the number of audio files in the audio path.

Note: Be sure to set up XPlay by selecting the menu item **Edit | Preferences**. Otherwise, XPlay won't know where to find audio files for playback.

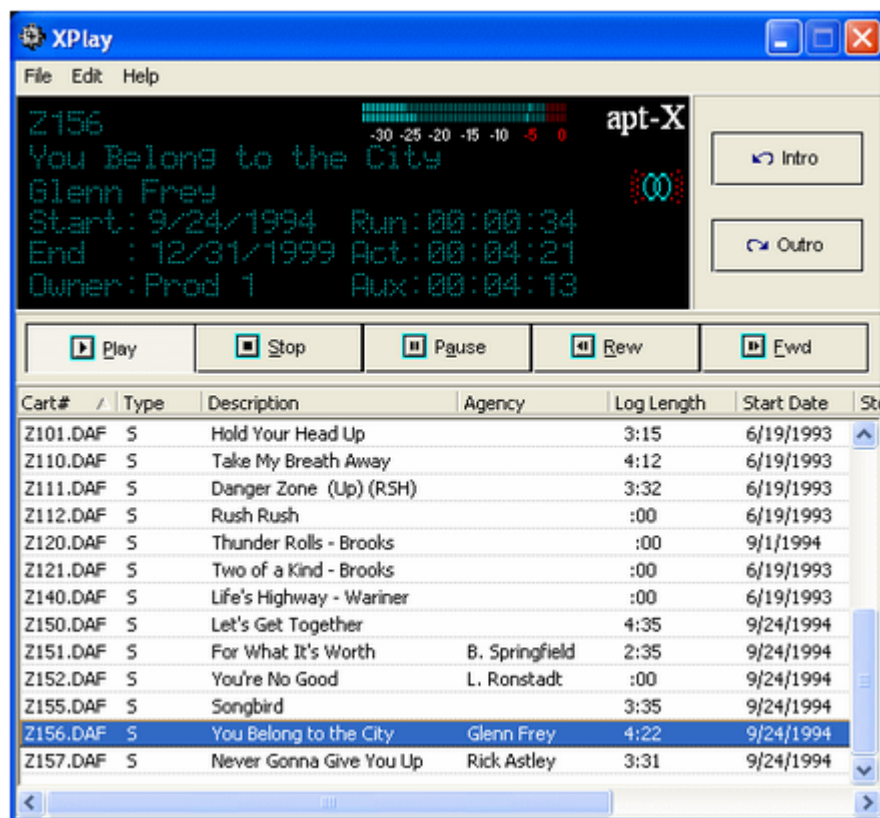
Main Display

Once started, you will see a display similar to the example here:

Hint: Float your mouse over the example display for information about each area of the display.



The main display is organized into three sections – a display of information about the current audio item (cart) being played, transport controls to control playback of audio, and a list of carts available for playback. The list of carts will have a different appearance if XPlay has scanned the audio path to build the list:



Navigating the Cart List

The cart list is initially displayed sorted by cart number in ascending order. You can change the list sorting by clicking on any one of the column headers. Clicking on a header will sort the list in ascending order, clicking again sorts in descending order.

To locate a cart (audio item) you wish to play, you can simply use the scroll bar on the cart list to scroll to the item. You can also find the item by typing the first few characters of the cart number or text associated with the current sorted column.

To select a cart, click on the item. The item will be highlighted, indicating the selection.

Playing a Cart

To play a cart, you must first select it. Once selected, you can start playing by clicking on the **[Play]** transport button. You can also **[Double-Click]** on an item to start playing it immediately.

Stopping Play

To stop play, click on the **[Stop]** transport button. The audio playback will immediately stop.

Pause/Resume Play

To suspend playback, click on the **[Pause]** transport button. To resume play, click on the **[Play]** button.

Hint: Clicking on the [Play] button a second time after resuming play will restart playback from the beginning of audio.

Fast Forward in a Cart

You can jump ahead in playback while a cart is playing by clicking on the **[Fwd]** transport button. XPlay will jump ahead ~3 seconds and continue playing. You can click on the button several times to move further, if desired.

Rewind in a Cart

You can jump backward in playback by clicking on the **[Rew]** transport button. XPlay will move back from current playback position ~3 seconds and continue playing. You can click on the button several times to move further back, if desired.

Play Cart Intro

To play just the first few seconds of a cart, click on the **[Intro]** button. Playback will start at the beginning of the audio and continue for the number of seconds you've set in Preferences.

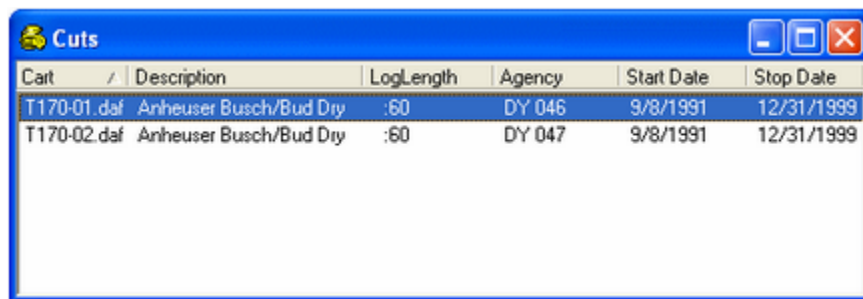
Play Cart Outro

To play just the last few seconds of a selected cart, click on the **[Outro]** button. Playback will start a few seconds from the end of the cut. The number of seconds is determined by your playback settings in [Preferences](#).

Working with Multi-Cut Carts

XStudio, DCS and Maestro support having multiple "cuts" (more than one piece of audio) associated with a cart number. XPlay will detect carts that have multiple cuts and, if you wish, display information about the cuts. You can also select a particular cut for playback instead of the default "next to play" cut that would normally be played.

To work with a multi-cut cart, select the cart in the list and **[Right-Click]**. A pop-up menu will appear. If there are cuts available, the pop-up menu items will be enabled. Select the menu item **[Show Cuts]**. A dialog will appear, similar to the example here:



Cart	Description	LogLength	Agency	Start Date	Stop Date
T170-01.daf	Anheuser Busch/Bud Dry	:60	DY 046	9/8/1991	12/31/1999
T170-02.daf	Anheuser Busch/Bud Dry	:60	DY 047	9/8/1991	12/31/1999

One of the handy features of XPlay is the full display of all information about each cut, whether or not it is currently in XStudio, DCS or Maestro's sequence list.

To play a cut, simply **[Double-Click]** on the cut you wish to play. The cuts window will close and the selected cut will begin playing. Once playing, you can use the rest of the transport buttons to stop, pause, rewind, fast forward, play the intro or play the outro, just like any normal, single-cut cart.

To select a different cut to work with, repeat the cut selection process described earlier.

Contacting dcsTools.com

Part



If you need to contact dcsTools.com, you can do so using one of the following methods. We are here to help, so do not hesitate to communicate with us when needed.

Mailing Address

C-R Media
8494 Saratoga Lane
Eden Prairie, MN 55347
USA

Telephone Information

Sales and Technical Support can be reached from 9:00 AM to 5:00 PM, U.S Central Time

Voice: 952-949-9450

FAX: 952-949-9448

Email Information

To contact us via email, use our [on-line contact form](#). If you wish to use a standard email client, send correspondence to: rich@c-rmedia.com.

Technical Support

To contact technical support for our products, use the telephone numbers or email information provided above. You can also send an [on-line product-specific email](#).

Web Site

Visit our [web site](#) for information on product updates and other products we offer.

Appendices

Part



IX

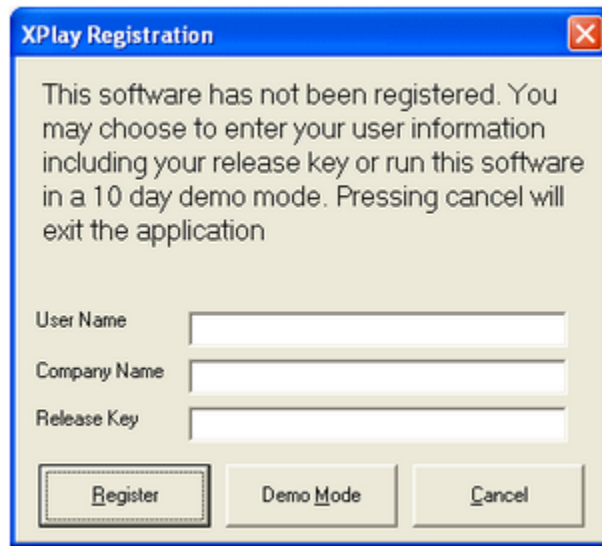
The topics in this section are supplemental to the XPlay documentation and contain information that may not be used on a day-to-day basis.

9.1 Registration

XPlay requires a valid registration code to enable full use of the product. If you have purchased XPlay, you should have received a registration code or instructions on how to obtain your registration code with your installation materials. The registration code contains the product serial number and is unique to each PC on which XPlay is installed. Depending on whether or not you have additional encoding options installed, you may need to register the options as well.

XPlay Application Registration

Enter registration information by selecting **Help | Register** from the main menu. You'll be presented with a dialog similar to the following:

The image shows a Windows-style dialog box titled "XPlay Registration". The text inside the dialog reads: "This software has not been registered. You may choose to enter your user information including your release key or run this software in a 10 day demo mode. Pressing cancel will exit the application". Below the text are three input fields: "User Name", "Company Name", and "Release Key". At the bottom of the dialog are three buttons: "Register", "Demo Mode", and "Cancel".

Fill in the **User Name** and **Company Name** fields as desired, and then enter the **Release Key**, exactly as it was supplied to you. Click on the **[Register]** button to save your registration information.

Hint: If you received your registration release key electronically, you can copy it from the source document and paste it into the **Release Key** field. Copy the key information in the source document, select the **Release Key** field in the XPlay Registration dialog, and use **[Ctrl-V]** to paste the key.

apt-X™ Encoder Registration

If you have the apt-X encoder software installed with a product, you must register this software module separately. The encoder software is machine-specific. This software can only be registered **after** it's installed on the PC.

When first installed, the apt-X encoder will pop up a trial run dialog when the host application is run. The dialog includes the option to register the software. The dialog will be similar in appearance to the sample below:



To get the registration process started, copy both the **MID** and **Site Code** information displayed on the trial dialog. You can use a mouse to select and copy each of the two codes to the Windows clipboard, if you wish, to avoid handwriting the information.

Both the **MID** and **Site Code** need to be sent to your supplier so the registration unlock code can be generated.



The apt-X registration dialog normally closes after several seconds if no action is taken by the user. To keep the dialog from closing while you copy down the needed information, select the "**Unlock Application**" radio button, which prevents the dialog from closing.

Soft apt-X™ Registration Step-by-Step

1. To register, select the "**Unlock Application**" radio button when the apt-X registration dialog is displayed. This stops the dialog from disappearing after a few seconds, giving you the time to write down both the **MID Code** and the **Site Code**, which appear across the top of the display.
2. When you have written down both codes, select the "**Enter Application**" radio button and click on the **[Continue]** button.
3. E-mail the Mid Code and Site Code information you've written down to your supplier, or alternatively, use our [on-line product-specific contact form](#). To better identify your request, write "**Soft apt-X Registration**" in the Subject line of your e-mail.
4. You will receive by return e-mail the necessary **Init Code** to register the apt-X software. You will also receive a **Remove Code**, which may be needed at a later time. Be sure to keep both of these codes for future use.

5. When you receive the **Init Code**, launch the application that uses the apt-X software. The apt-X dialog will again appear. Select the “**Unlock Application**” radio button and enter the **Init Code** you received. Click on the [Continue] button. The registration information is recorded and the apt-X software is now registered.



If you decide to move the software that uses apt-X and the apt-X encoder software to another machine or substantial changes occur on the PC running with the apt-X software, the apt-X registration will have to be transferred or updated. In order to do so, you will need the **Remove Code**. Be sure you have saved both the **Init Code** and the **Remove Code** in a safe place!

9.2 List of Files

When XPlay is installed, a number of files are placed on your computer. All files are placed in the application directory - the folder where XPlay was installed.

XPlay Core Files

These are the files that placed on your system when XPlay is installed, listed alphabetically.

<u>File Name</u>	<u>Description</u>
aptx100.dll	apt-X 100 decoding module (if option installed).
aptX_RegDlg.exe	apt-X registration application (if option installed).
mmmpeg32.dll	MPEG decoding module.
pcgw32.dll	apt-X decoding support module (if option installed).
unins000.dat	XPlay uninstall data file.
unins000.exe	XPlay uninstall program.
XPlay.chm	XPlay HTML help file.
XPlay.cnt	XPlay WinHelp contents file.
XPlay.exe	The XPlay program.
XPlay.hlp	XPlay WinHelp file.
XPlay.ini	XPlay settings file.
XPlayQSG.pdf	XPlay Quick Start Guide.
XPlay_Manual.pdf	XPlay manual in PDF format.

Index

- C -

Copyrights 5

- D -

dcstools.com

Address 27

Email Address 27

Telephone Numbers 27

- I -

Installing 16

- L -

License 11

License Agreement 11

- R -

Removing 16

- T -

Trademarks 5

- U -

Uninstalling 16

Upgrading 16

- W -

Warranty 11

© Copyright 2002-2021 C-R Media, KTC Technologies Ltd All Rights Reserved.